

# ARCHOS™

on the go 

## Gmini™ XS100



MP3 & WMA Digital Music Player & USB 2.0 Hard Disk



### English user manual

Version 1.1 - Please see the Archos web site ([www.archos.com](http://www.archos.com)) for the most recent manual and software updates for your Gmini™.

*An introductory note from ARCHOS*

Dear Customer,

Archos thanks you for choosing our new ultra-small Gmini™ XS100. Check out our web site **[www.archos.com](http://www.archos.com)** to find the available accessories for this product (car adapter, carrying cases, etc.). Also, while at our web site, check for free downloads of updated and improved software for your device.

The principal function of the Gmini™ is, of course, to play music. Because it has a real hard disk inside of it, you can store hundreds of songs. Using a standard audio cable, you can also play your music through a home entertainment system. You can bring your entire CD collection with you anywhere and play it over anyone's sound system.

Putting music onto your Gmini™ is as easy as 'drag and drop' for your unprotected music files. And for protected purchased music from PlaysForSure web sites, it is as easy as clicking the Sync button in Windows Media® Player. Plus, with its USB 2 high speed port, transfers are finished before you know it. The Gmini™ is also ID3 compatible. This means that the ARCLibrary will sort your music so that you can listen to it by artist, album, title, year, or genre. Click on Shuffle, and listen to your music at random.

Finally, you can always use the Gmini™ as a portable hard drive to carry your important files with you. You can even use the Archos double-browser to rename, create, copy, move, and delete files and folders.

This manual gives you all the information you need to know on using your Gmini™. Read though it carefully, you just may find out it can do some neat things that you didn't expect. If you are stuck, you can always call our help line or e-mail support to get a friendly Archos agent to give you a hand.

Wishing you the best music listening experience,

The Archos Team

# Contents

|          |   |    |           |
|----------|---|----|-----------|
| <b>1</b> | <b>Ports, Buttons, and Connections</b>                                      |    | <b>5</b>  |
| <b>2</b> | <b>First Time Usage</b>   |    | <b>6</b>  |
| 2.1      | Charging the Battery  | 6  |           |
| 2.2      | Turning the Gmini™ XS100 ON and OFF   | 7  |           |
| 2.3      | Changing the Interface language   | 7  |           |
| 2.4      | Caring for the Gmini™   | 7  |           |
| 2.5      | Foreign Character Sets  | 7  |           |
| <b>3</b> | <b>Playing Music</b>  |    | <b>8</b>  |
| 3.1      | Playing a Music File  | 8  |           |
| 3.2      | Play Screen and Button Control  | 9  |           |
| 3.3      | Playback Menu Items   | 11 |           |
| 3.4      | ARCLibrary Specifics  | 11 |           |
| 3.5      | ARCLibrary Updating   | 12 |           |
| 3.6      | Setting a Bookmark  | 12 |           |
| 3.7      | The Resume Function   | 12 |           |
| 3.8      | Locking the Gmini™ Buttons  | 13 |           |
| <b>4</b> | <b>Putting Music onto your Gmini™ XS100</b>                                 |    | <b>14</b> |
| 4.1      | Synchronizing Music from Windows Media® Player (WMP) to the Gmini™ XS100    | 14 |           |
| 4.1.1    | Synchronizing Music from Windows Media® Player (WMP) 9 to the Gmini™ XS100  | 14 |           |
| 4.1.2    | Synchronizing Music from Windows Media® Player (WMP) 10 to the Gmini™ XS100 | 15 |           |
| 4.2      | Transferring your CD collection to the Gmini™ XS100                         | 15 |           |
| 4.3      | Installing Windows Media® Player (WMP) 9                                    | 16 |           |
| 4.3.1    | Copy the Installation folder and run the installer                          | 16 |           |
| 4.4      | Installing Windows Media® Player (WMP) 10                                   | 16 |           |
| <b>5</b> | <b>Playlists</b>  |    | <b>17</b> |
| 5.1      | Creating a new Playlist   | 17 |           |
| 5.2      | Loading a Playlist  | 18 |           |
| 5.3      | Playing a Playlist  | 18 |           |
| 5.4      | Playlist Menu Options   | 18 |           |

|           |  |    |           |
|-----------|--|----|-----------|
| <b>6</b>  | <b>Settings</b>  |    | <b>20</b> |
| 6.1       | Changing the Sound Settings                                | 20 |           |
| 6.2       | Changing the PlayMode Settings                             | 22 |           |
| 6.3       | Changing the time & date settings                          | 23 |           |
| 6.4       | Changing the Display Settings                              | 24 |           |
| 6.5       | Changing the Power Settings                                | 25 |           |
| 6.6       | Changing the System Settings                               | 26 |           |
| <b>7</b>  | <b>Using the Browser</b>                                   |    | <b>27</b> |
| 7.1       | Inside the MUSIC Folder                                    | 27 |           |
| 7.2       | Navigating the Directory Structure                         | 28 |           |
| 7.3       | File and Folder Operations in Browser Mode                 | 29 |           |
| 7.3.1     | Contextual Menu on a File                                  | 29 |           |
| 7.3.2     | Contextual Menu on a Folder                                | 29 |           |
| 7.3.3     | Contextual Menu while in the Double Browser                | 30 |           |
| 7.4       | Using the Virtual Keyboard                                 | 30 |           |
| <b>8</b>  | <b>Connecting the Gmini™ XS100 to a Stereo system</b>      |    | <b>32</b> |
| <b>9</b>  | <b>Connecting the Gmini™ to your Computer</b>              |    | <b>33</b> |
| 9.1       | Making the USB Connection                                  | 33 |           |
| 9.2       | Using the Gmini™ as an External Drive                      | 34 |           |
| 9.3       | Disconnecting the Gmini™ from your Computer                | 34 |           |
| 9.3.1     | Windows®   | 34 |           |
| 9.3.2     | Macintosh®   | 35 |           |
| <b>10</b> | <b>Using iTunes™ with your Gmini™ XS100</b>                |    | <b>36</b> |
| <b>11</b> | <b>Updating the Gmini™ XS100 Firmware</b>                  |    | <b>37</b> |
| 11.1      | Download the Update_GminiXS100.AOS file                    | 37 |           |
| 11.2      | Copy to Gmini™ root and Update                             | 37 |           |
| <b>12</b> | <b>Troubleshooting</b>                                     |    | <b>39</b> |
| 12.1      | USB Connection issues                                      | 39 |           |
| 12.2      | File issues, corrupted data, formatting, and partitioning. | 41 |           |
| 12.2.1    | Windows® ME Running Scan-Disk (Error Checking)             | 41 |           |
| 12.2.2    | Windows® XP & 2000 Running Check Disk Utility (ChkDsk)     | 42 |           |
| <b>13</b> | <b>Technical Specifications</b>                            |    | <b>43</b> |
| <b>14</b> | <b>Technical Support</b>                                   |    | <b>44</b> |
| <b>15</b> | <b>Legal and Safety Notices</b>                            |    | <b>45</b> |

# 1 Ports, Buttons, and Connections



A Power jack – to connect an optional AC adapter/charger

B USB 2.0 port – To connect to your computer to transfer files to Gmini™ and to charge its battery

C Headphone Jack

D On button (hold 3 seconds) & Menu options

E Off button (hold 3 seconds) & Stop/Escape

## Navigation pad

F Move Up & increase volume

G Move Down & decrease volume

H Move Left (decrease value) or audio rewind

I Move Right (increase value) or audio fast forward

J Play/Pause/Enter

a CHG – Battery charging indicator

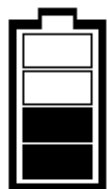
b HDD – Hard drive activity indicator

# 2 First Time Usage

## 2.1 Charging the Battery

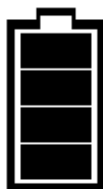
**Before using your Gmini XS100 for the first time, completely charge the battery for two hours.**

- The Gmini™ XS100 is charged through its USB connector. Connect the included USB cable to a running computer and plug the other end into the Gmini™ while it is off. This will charge its internal battery. The CHG indicator will also light up to show that its battery is charging.
- The battery is fully charged when the full battery icon appears.



*Animated battery:*

*The battery is currently being charged.*



*Full battery:*

*The battery is fully charged.*

- You can purchase an Archos charger/adapter to charge the battery from a wall outlet. The blue CHG indicator lights up to indicate that the external adapter is connected. The battery will charge automatically when it is plugged in.
- After the first initial full charge, you may use the Gmini while the AC adapter is plugged in.

## 2.2 Turning the Gmini™ XS100 ON and OFF

- Press and hold the ON/Menu button until the screen comes on.
- The Gmini will automatically shut off after a given amount of time if no buttons are pressed. To conserve battery energy, the backlight will automatically shut off. You can change these parameters in **Setup > Power**.
- Press and hold the Stop/off button until the Gmini shuts off.

## 2.3 Changing the Interface language

- English is selected as the default language for your Gmini user interface. You can choose another language by going to **Setup > Display**.

## 2.4 Caring for the Gmini™

The Gmini is an electronic product that needs to be treated with care.

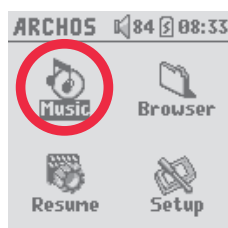
- Do not subject it to unnecessary shock or vibration. You may however go jogging with it or do sports.
- Do not subject it to heat. Keep it ventilated (especially when connected to a computer).
- Keep the Gmini away from water and excessively humid areas.
- Keep the Gmini away from high electromagnetic fields.

## 2.5 Foreign Character Sets

You have the possibility to display your file names, folder names, and MP3 ID3 tags in various character sets (ex: Korean, Japanese, Simplified Chinese, etc.). You can find the language files *CodePage\_name.4fz* in the font folder under /Data on the Gmini XS100 hard disk or on the Archos website under the heading Software.

If, for example, you would like to have the Japanese language display, you would copy the file *Cp932.4fz* into the folder /system on the Gmini XS100. Shut down and restart the Gmini XS100. File names, folder names, and ID3 tags written using the Microsoft® codepage for the language will now be displayed in that character set. Only one.4fz file can be used at a time, thus you should only put one.4fz file into the /system folder. When an.4fz language file is used, the interface language will be set to English.

# 3 Playing Music



Once the Gmini has been turned on, the following screen is displayed. You can select the major functions from this main menu.

- **Music:** Browse through the folder **Music** or use the **ARCLibrary** music selection system.
- **Browser:** Browse through and manage all of the other files on your Gmini.
- **Resume:** Resume playing from the last place you stopped.
- **Setup:** Set the parameters of your Gmini to your personal taste.

## 3.1 Playing a Music File



By clicking on the Music icon in the main menu screen, you will enter into a 'music only' mode. File types other than WMA, WAV, and MP3 that may be in those folders will be filtered from view.

There are two ways to access your music, by selecting **Browse hard disk** or by searching the songs' tag information, **Artist, Album, title, etc.** In the case of Browse hard drive, you will be sent directly to the **Music** folder of your Gmini. Here you can look at all your music files and the folders on your Gmini's hard drive as if you were browsing files with a computer. The other way is to browse your music by tag information, artist, album, song name, year, or genre. The **Unknown** category indicates that the file has no tag data.

To select a music file, use the navigation controls UP and DOWN to move upwards or downwards and ENTER to enter a highlighted subfolder or tag category. Click ENTER to play the highlighted song. Use LEFT to leave a folder and go back to the previous level.

## 3.2 Play Screen and Button Control

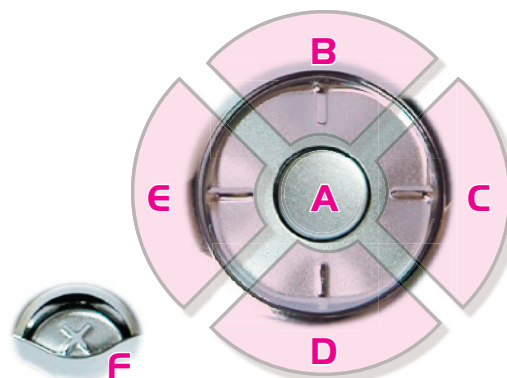
- (1) Menu available
- (2) Artist\* or parent folder
- (3) Song title\* or file name
- (4) Album\* or current folder
- (5) File format and recording information
- (6) Status: playing
- (7) Play Mode: Folder
- (8) Play Order: Repeat
- (9) Volume (0-99)
- (10) Battery level
- (11) Real time clock
- (12) Song elapsed time
- (13) Song time remaining
- (14) Song length

\*If the file contains these tag data



9

- A Play/pause/resume song
- B Increase the volume
- C **Click once:** Play the next song in the folder or playlist.  
**Hold:** Fast forward through the song.
- D Decrease the Volume
- E **Click once:** Play the previous song in the folder or playlist (during first 5 seconds of song) otherwise go to the beginning of the song.  
**Hold:** Fast reverse through the song.
- F Stop Song



### Play Status

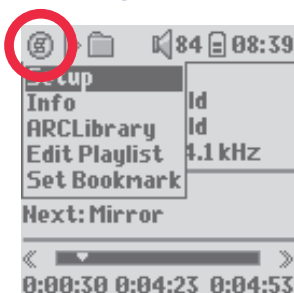
- Stopped
- Playing a track
- Current track is paused

### Play Order

- (no icon) Play once
- Shuffle (Random) track selection
- Repeat playing

The top status bar indicates the status and play settings that you have given. See the Settings chapter for a description of the Playmode options.

### 3.3 Playback Menu Items



When the menu icon appears, you have certain options. During song playback, press the MENU button for the following options.

- **Setup:** Enters the **Setup** screen (same as selecting the Setup icon in the main menu) which allows you access to parameters such as bass and treble.
- **Info:** Show file information such as the file name, number of kilobytes of hard drive space used, date created, file format, etc.
- **ARCLibrary:** Allows you to browse through your ARCLibrary while listening to the current song.
- **Edit Playlist:** Enters the playlist editor (see below how to use Playlists).
- **Set Bookmark:** Set a bookmark at the current position within the audio file. See the **Bookmark** section below.

### 3.4 ARCLibrary Specifics



The ARCLibrary is a system for choosing your music by its characteristics. It can be turned On or Off in the settings from **Setup > Playmode**. As shown in this screen capture here, you can select your music by Artist, Album, Song Title, Genre, or Year. MP3 and WMA music files have internal data tags to hold information about the song. For MP3 files, these are known as ID3 tags. Not all MP3 files have all this information filled in. If you purchase a song from a music download service, the song will have this information. If you have an MP3 or WMA file without this tag information, then you can add or change it by going to the properties of the file in Windows® Explorer. Once you update the ARCLibrary, you will have access to all newly copied music via the ARCLibrary. The ARCLibrary indexes all the music and playlists that it finds in the folders **Music** and **Playlists** by using the tag information in each song. Thus, you should never delete the folders **Music** or **Playlists**. If a song does not have tags, it will be put into the category **<unknown>**.

11

### 3.5 ARCLibrary Updating

If you paste unprotected audio files from your computer to the Gmini, they go directly to the Gmini hard disk without the ARCLibrary knowing about the new song. This is why the ARCLibrary is updated when you disconnect your Gmini from the computer. Alternatively, you can set up the ARCLibrary to update only when you choose to, by setting it to "On", not "automatic". You can find the information on how to do this in the section **Playmode** in the **Settings** chapter. You will then have to go to the **Setup > Playmode** screen, highlight [Update ARCLibrary] and press ENTER. A message screen will appear indicating that it is updating the ARCLibrary contents.

### 3.6 Setting a Bookmark



If you are listening to a song, or perhaps a long recording, and would like to place a bookmark in it in order to pick up from this point at another time, you can use the Bookmark function. While listening to the audio recording, simply click on the MENU button, then choose **Set Bookmark**. This will set a bookmark in the audio file at the current position. You can only set one bookmark per file. When you look at the file in your browser, it will have a small mark on its icon indicating that this file has a bookmark set within it. You can have a maximum of 16 files bookmarked. Setting more bookmarks will erase existing bookmarks, starting with the oldest. The next time you play the audio file, you will be presented with two options:

**Resume:** Start playing from the bookmarked position.

**Ignore:** Keep the bookmark but start playing from the very beginning.

To clear a bookmark from a file, highlight the file and use the MENU button, then choose **clear bookmark**.

### 3.7 The Resume Function



When you turn on your Gmini you will sometimes notice that the icon which is highlighted on the main screen is not the **Browser** but rather the **Resume** icon. This icon is highlighted when the Gmini XS100 can resume the last played audio file.

### 3.8 Locking the Gmini™ Buttons



You can prevent the Gmini from executing unintended functions by locking the buttons. To lock the buttons, hold down on the MENU button until the “lock” icon appears in the top-left corner of the screen. Now the buttons are disabled, but you can still use the UP and DOWN controls on the navigation pad to change the volume. To unlock the buttons hold down again on the Menu button until the “lock” icon disappears.



## 4 Putting Music onto your Gmini™ XS100



Your Archos™ product is a certified PlaysForSure™ digital device which means that wherever you find music for sale on the Internet with this symbol, you can be certain that they will ‘Play for sure’ on your Gmini XS100. Please note that the Gmini XS100 does currently not support subscription services. Check the Archos website to see if there is update software that will provide for recognition of these services on your device. For additional information on ‘Play for sure’ and download services, check out the web site [www.playsforsure.com](http://www.playsforsure.com).

The Gmini XS100 is designed to work seamlessly with Windows Media® Player (WMP) versions 9 and 10. The Windows Media® Player software is used to download digital media content from the Internet to your computer and organize it. You will also use it to sync (copy) the contents of your Windows Media® Player media library to your Archos™ device.

### 4.1 Synchronizing Music from Windows Media® Player (WMP) to the Gmini™ XS100

Windows Media® Player (WMP) allows you to synchronize music between your computer and Gmini XS100: That means, it will add music files to your Gmini XS100 so that you have the same digital media on your Gmini as you have in your Windows Media® Player library. The synchronization is one way, that is to say, copying tracks from your computer to your Gmini, but not vice versa. You can choose to sync only certain songs or to sync your entire library.

#### 4.1.1 Synchronizing Music from Windows Media® Player (WMP) 9 to the Gmini™ XS100

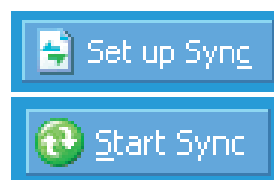
Access the Copy tab in WMP 9. On the left hand side, you should see music files from your music library (saved on your computer) and on the right, the files and folder on your Gmini XS100. Check the files you want to copy to the Gmini. Make sure you have selected the folder on the Gmini into which you want to copy your music. In the top right corner of WMP, you will find the Copy button which starts the synchronization process.





#### 4.1.2 Synchronizing Music from Windows Media® Player (WMP) 10 to the Gmini™ XS100

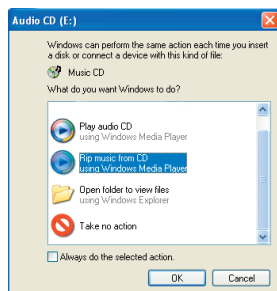
Access the **Synchronise** tab in WMP 10. If this is the first time you are using this option, WMP will offer to set up automatic synchronisation of your music files. If this box is checked, every time you connect your Gmini to your computer, WMP will automatically start up and check to see whether any of the music files on the computer have not yet been copied to the Gmini. These files will then be copied to your computer. If you choose to manually synchronise your files, you can always set up automatic synchronization by clicking the **Set up sync** button.



On the left hand side, you should see music files from your music library (saved on your computer) and on the right, the files and folder on your Gmini XS100. Check the files you want to copy to the Gmini. Make sure you have selected the folder on the Gmini into which you want to copy your music. On the tool bar, you will find the **Start Sync** button which starts the synchronization process.

**Attention: Files deleted from the WMP music library will also be deleted from the Gmini.**

#### 4.2 Transferring your CD collection to the Gmini™ XS100



The process of transferring music from a CD into files for your Gmini XS100 is known as 'ripping'. It is actually a transcoding process, taking the CDA (CD Audio) format and converting it to WMA or MP3 format which the Gmini can read. There are many music ripping programs on the market, but the easiest thing to do is to use Windows Media® Player to do it. In fact, when you place a music CD in your computer, Windows® will ask you if you would like to rip it. Depending on the power of your computer, to rip a 60 minute CD, it will take anywhere from 10 minutes to 60 minutes. Once this is done, the album will become part of your music library. Connect your Gmini to your computer with the supplied USB cable. Now, you go to the **Sync** tab and tell Windows Media® Player to synchronize that album to your Gmini. It will then transfer that album to your Gmini.

*Note: Some music CDs have a special copy protection system that will not allow Windows Media® Player to make music files from them.*

#### 4.3 Installing Windows Media® Player (WMP) 9

If you have Windows® ME, and 2000, you should use Windows Media® Player 9. The easiest way to install this software is to visit the Microsoft® Website and download the very latest version, or install the version found on the Gmini XS100 itself.

#### 4.4 Installing Windows Media® Player (WMP) 10

You must be running Windows® XP (Service Pack 1 or higher) in order to install Windows Media® Player 10. Please visit Microsoft's PlaysForSure website ([www.playsForSure.com](http://www.playsForSure.com)) and download the very latest version of Windows Media® Player 10.



## 5 Playlists

A Playlist is a list of songs that the Gmini will automatically play one after the other. The Gmini can handle one Playlist at a time. You can create new Playlists, add or delete songs from a Playlist, or Save a Playlist as a file (file type.m3u) to be used another time. There is no limit to the number of Playlists you can save on the Gmini hard drive. A Playlist can have a maximum of 1000 songs in it.

### 5.1 Creating a new Playlist



To create a Playlist, press the RIGHT button while you are in the Music browser. A second panel is opened on the right side to display the Playlist contents (shown empty in the picture). You can now start adding songs to the current Playlist.

Note: If tracks are displayed in the right panel, this means a Playlist is already open. To create a new Playlist, close the current list first (see the Playlist Menu options) and click RIGHT again.

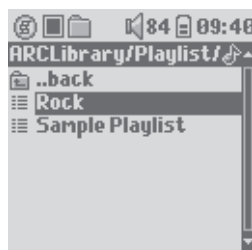
In the left panel, search for the songs you would like to add to your Playlist. Once the song is highlighted, click on the ENTER button to add it to the Playlist. The song will be added to the Playlist and a small mark is placed next to the music note icon to indicate that it is now in the Playlist. You can also add all the music files of a complete folder in one operation by highlighting the desired folder and choosing **ADD** or **INSERT** on the menu.

Be careful about which panel you are in since the left panel menu has different options than the right panel menu. Continue searching and adding songs in this manner until you are satisfied. You can jump back and forth anytime between the two panels by clicking LEFT/RIGHT on the navigation pad.

We recommend that you save your Playlists to the Gmini hard drive (see Playlists Menu Options below) to use it again later. After saving a new Playlist, use the menu of the left panel to update the ARCLibrary in order for it to appear in your Playlists folder. The menu also offers you the option INSERT: The track will be added before the track which is highlighted in the Playlist.

17

### 5.2 Loading a Playlist



You can load a previously saved Playlist or add the files it contains to the current Playlist. Use the music browser to select the Playlist of your choice (Playlists are indicated by a special list icon) and then press OK. If there were already some items in the Gmini Playlist, then the songs of the loaded Playlist will be added to the end of it. You can then check or modify the Playlist as usual in the Playlist panel.

### 5.3 Playing a Playlist



After loading a Playlist, press the RIGHT control on the navigation pad to go into the Playlist edition panel. Then use the UP and DOWN controls to select a song. Click on ENTER, and your Playlist will start playing from that song according to the current PlayMode settings.

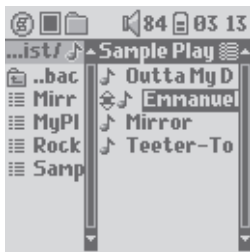


### 5.4 Playlist Menu Options



While in the Playlist screen (right side) you have the following options.

- **Save:** Saves the current Playlist onto the Gmini so that it can be reloaded later. It will be saved into the directory **Playlists**.
- **Close:** Closing the list enables you to create a new Playlist by using the RIGHT control of the navigation pad whilst in the Music folder or any of its sub-folders.
- **Rename:** Changes the name of the current Playlist using the Virtual Keyboard.
- **Shuffle:** Randomly changes the order of the items in the loaded Playlist.
- **Clear:** Removes ALL tracks from the loaded Playlist.



(Moving a music track)

- **Move:** Allows you to change the order of songs in the Playlist by moving them up or down using the UP/DOWN buttons of the navigation pad.
- **Delete:** Removes the highlighted track from the playlist.

*Note: To delete a Playlist, navigate to **Browser > Playlists**. Highlight the Playlist, the menu button, highlight **Delete** and press ENTER.*

**Important:** Once you save a Playlist it is important that you do not move the actual files as the Playlist searches in the original file location. If you need to move your files to a different folder, you'll have to recreate your Playlists.

## 6 Settings



There are a number of parameters you can set on the Gmini to make it operate according to your particular needs. Start by clicking on **Setup**.

Within the menus, you will find different parameters. In order to modify a parameter, click LEFT or RIGHT on the navigation pad. Note that once you have reached the last option, clicking further will not normally take you back to the first item in the list.

### 6.1 Changing the Sound Settings

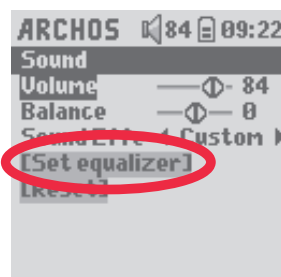
If you would like to customize the sound quality, go to [**Setup > Sound**].



| Parameter       | Description  |
|-----------------|--|
| Volume          | Range: 0 to 99 Controls the current volume.  |
| Balance         | Range: -5 to +5 (left to right)  |
| Sound effect    | Rock, Techno, Jazz, Classic, Live or Custom<br>Change this parameter to select an equalizer setting to the style of music you are listening to.<br>Select Custom to set your own equalizer levels. |
| [Set Equalizer] | To customize the equalizer. See below.   |
| [Reset]         | Sets all your sound parameters with default or flat values.  |

#### Customizing the equalizer

To set the equalizer, highlight the **[Set equalizer]** line and then click on ENTER. You will now be able to adjust the Gmini's five band equalizer. Use the LEFT/RIGHT buttons to select a specific frequency range (Bass, Medium-Base, Medium, Medium-Treble, Treble) and then use the UP/DOWN buttons to increase or decrease the response for the given frequency range. Modifying these settings changes the sound in real time. Thus it is best to change these values while listening to a song.



1.



2.



3. Change values

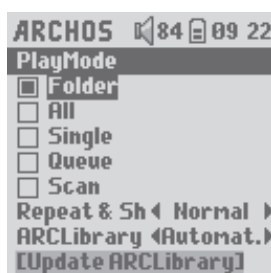


4. Exit screen.

21

## 6.2 Changing the PlayMode Settings

If you would like the Gmini to play through an entire folder of songs, play songs at random (shuffle), or any of the other playing options, you can set these parameters in the Playmode settings. Go to **Setup > Playmode**.



| Parameter          | Description   |
|--------------------|---|
| Current Folder     | Play all tracks in the current directory  |
| All                | Play all tracks on the Gmini  |
| Single             | Play a single track then stop   |
| Queue              | User can queue the next track to be played †  |
| Scan               | Gmini plays first 15 seconds of each track ††   |
| Repeat and shuffle | This parameter allows you to choose the order of play of your songs<br><b>Normal:</b> the music sequence is played once<br><b>Repeat:</b> the music sequence is played in a loop<br><b>Shuffle:</b> the music sequence is played randomly |

## ARCLibrary

Off, On, Automatic (default)

The ARCLibrary feature enables you to see your music organised by Artist, Album, Title, Genre and Year. Select Off to disable the feature or On to enable it. On Automatic, the library will update itself when disconnected from the computer.

## ARCLibrary Update

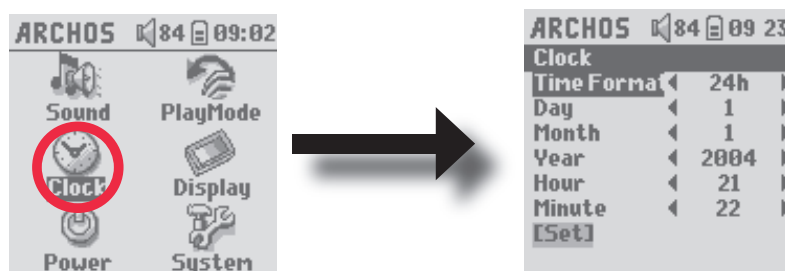
Scans through all music and playlists in the folders **Music** and **Playlists** and indexes these into the ARCLibrary. You need to do this only when you have copied new music to your Gmini.

*†Queue Mode: You do not need to select this mode in the Playmode Settings. While the current song is playing, simply click on the menu button and select Browser or ARCLibrary (depending on the current folder), find the next song you want to play, then click ENTER.. This is your queued song. The lower arrow of the Queue icon will turn black. You can only queue one song at a time. See the Playlist section to prepare multiple songs to play. Once the current track has finished playing, your queued track will be played. If you do not queue another track at this time, the Gmini will play the next song in the original directory.*

*††Scan Mode: Each track in the directory is played for 15 seconds. This allows a quick sample of each song. If you want to play the whole song, click on the Play button during those first 15 seconds. The Gmini will then revert to single directory mode and play the rest of the songs in the directory without scanning.*

## 6.3 Changing the time & date settings

In order to set the time and date or to change the time format, go to **Setup > Clock**.



23

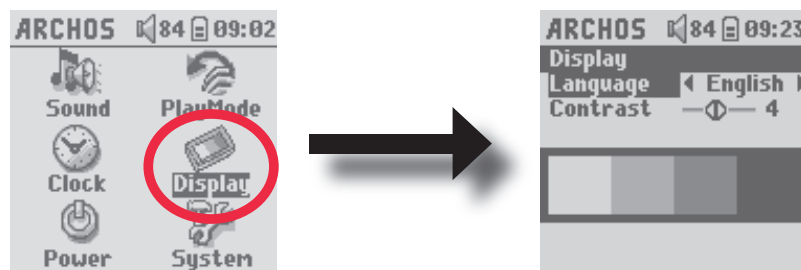
The **Time format** can be set to a 12 hour clock (0:00 to 12:59) or 24 hour clock (0:00 to 23:59).

The Time is expressed in **Hours**, **Minutes** and **Seconds**, although seconds are not displayed. The date is expressed as **Day**, **Month** and **Year**.

Having modified all necessary parameters, be sure to set them. To do this, highlight the [Set] line and the click ENTER. Wait a moment for the Gmini to save the new values before clicking the STOP/ESCAPE button.

## 6.4 Changing the Display Settings

In order to change the operating language of the Gmini or the contrast of the display, go to **Setup > Display**.



### Parameter

### Description

#### Language

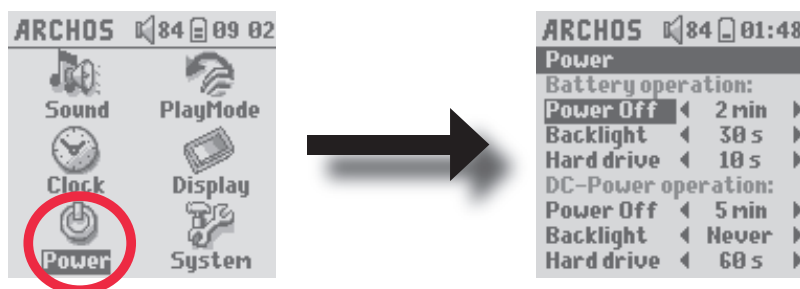
Use this option to set the operating language of the Gmini. Options are **English**, **Français**, **Deutsch**, **Español** and **Русский**.

#### Contrast

These values represent the black/white contrast of the screen.

## 6.5 Changing the Power Settings

To help you get the most battery life out of your Gmini before having to recharge it, you can adjust the power settings. Go to **Setup > Power**.

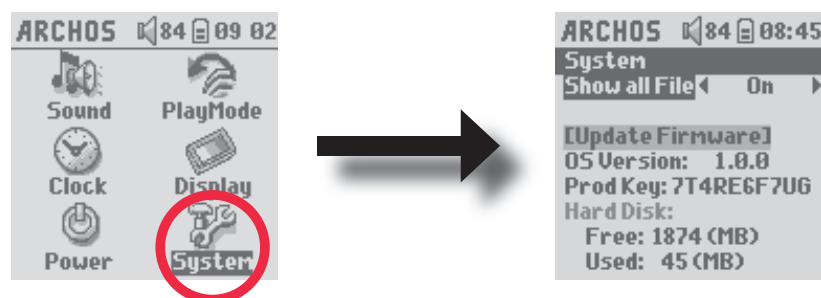


| Parameter  | Description  |
|------------|--|
| Power Off  | <b>Range: 1 to 9 minutes or Never.</b><br>Number of minutes of user inactivity before the Gmini automatically shuts off. The Gmini will not shut off during the playback of music files. Never (on DC Power) indicates that the Gmini will not do an automatic shut down.  |
| Backlight  | <b>Backlight shut down time: Off, 10 to 90 seconds, Always.</b><br>The time of user inactivity (no buttons pressed) before the Gmini turns off the backlight. Always indicates that the backlight will always stay on. Keeping the backlight on will reduce the battery time.  |
| Hard drive | <b>10-90 seconds.</b> The number of seconds from the time of the last file access before the Gmini tells the internal hard disk to stop spinning. The longer this time, the more often the hard disk is turning and the quicker the response time when accessing files. However, as it is set longer, it will quickly consume your battery. Caution: This setting should only be changed by experienced users. The default setting is 60s. |

25

## 6.6 Changing the System Settings

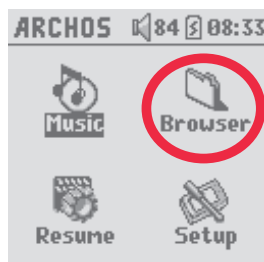
To change the system parameters or get information about the system, go to **Setup > System**.



| Parameter         | Description   |
|-------------------|---|
| Show all files    | If "Off" is selected, files are filtered so that only music files are shown. The "On" setting lets you see other file types as well as music files.   |
| OS Version        | Displays the current version of the Operating System (OS).  |
| Prod key          | Display the product key of your Gmini XS100. Every Gmini has a unique product key number.   |
| Hard Disk         | Displays the amount of free and used space on the Gmini's hard disk. Reported number of megabytes is binary based counting (1kb=1024 bytes). Thus each reported MB represents approximately 1.05 megabytes (decimal). Formatting also takes up space. |
| [Update Firmware] | Used to update the Gmini to a new version of the Operating System. See the chapter <b>Updating the Gmini Firmware</b> .   |

26

## 7 Using the Browser



The browser is used to navigate the file system on the Gmini. The file system is the same type of file system that is found on Windows® based computers. This way, transferring files from your computer to your Gmini is as easy as 'drag and drop'. The file system is a hierarchical system which includes folders and subfolders. Because you will be putting hundreds of files onto your Gmini, it is **STRONGLY ADVISED** that keep a neat and orderly file structure. We suggest that you keep the predefined folders: **Data** (to carry miscellaneous data files with you), **Music** (all of your music files), and **Playlists** (to hold all your music Playlists).

### 7.1 Inside the MUSIC Folder

The top level of your Archos Gmini includes the folder **Music**. Most people who create neat file structures for their Archos players make the following hierarchy within the Music folder.

Level 1 – **Artist** (Dire Straits, Madonna, Stravinsky, etc.)

Level 2 – **Album** (Brothers in Arms, American life, etc.)

Level 3 – **Song** (Money for Nothing, etc.)

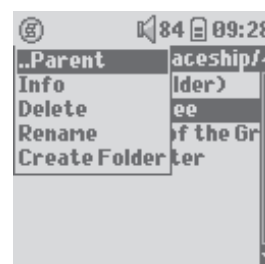
The folder **Music** is a special folder in that the **Music** icon on the main screen leads to this folder directly. It should not be deleted or renamed.

27

### 7.2 Navigating the Directory Structure



Just below the top status bar, you can see the directory you are currently viewing. To navigate the directory structure you will use the UP/DOWN controls of the navigation pad to move through the files in a directory. Press ENTER to enter a highlighted folder. To go back up one level in the directory structure, you can either use the contextual MENU button (select Parent) or click on the LEFT control. The contextual MENU button allows you to create new folders, delete folders, rename a file or folder, or display information about a file.



### Button Controls

#### Key

Up  
Down  
Right  
Left  
ENTER  
  
Off/Esc  
Menu

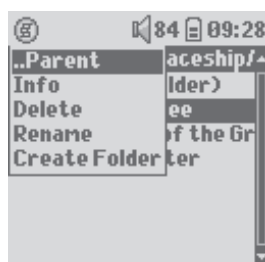
#### Action

Highlights the previous file or folder in the current directory  
Highlights the next file or folder in the current directory  
Open double-browser or gives the focus to the right panel.  
Goes to parent directory if single panel view. Gives the focus to the left panel when in double-browser mode.  
Folder highlighted: enters this folder.  
File highlighted: Plays the file if it is a music file.  
Exit Browser mode.  
Displays the contextual menu.

### 7.3 File and Folder Operations in Browser Mode

While browsing the directory structure, you will have the option to manipulate files and folders. When you use the Browser mode, you will be browsing through the Gmini's hard drive as if browsing via a computer. In Browser mode, you can create folders, delete files or folders, rename files or folders, and copy or move files from one place to another.

#### 7.3.1 Contextual Menu on a File



**Info:** Show file information such as song length, number of kilobytes used of hard drive space, date file was created, etc.

**Rename:** Allows you to change the name of the highlighted file. You cannot change the file extension type for file types that are playable by the Gmini. You will be sent to the virtual keyboard (see the next section) to enter the new file name.

**Delete:** Delete the file permanently from the Gmini. (Before it is deleted, the Gmini will ask for confirmation: "Delete file? - Yes/No"). Press ENTER to confirm or STOP/ESCAPE to cancel.

**Create Folder:** Create a new folder in the current level of the directory. You will be sent to the Virtual Keyboard to enter the new folder name. There is a limit of 1000 files per folder.

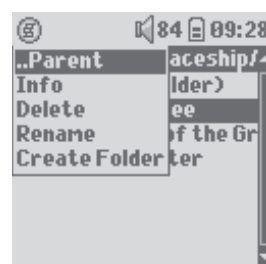
#### 7.3.2 Contextual Menu on a Folder

**Info:** Show file information such as number of kilobytes of hard drive space used, date created, number of files and folders the folder contains etc.

**Rename:** Allows you to change the name of the highlighted folder. You will be sent to the virtual keyboard (see the next section) to enter the new folder name.

**Delete:** Delete the file permanently from the Gmini. (Before it is deleted, the Gmini will ask for confirmation: "Delete folder X? - Yes/No." Press ENTER to confirm or STOP/ESCAPE to cancel.

**Create Folder:** Create a new folder in the current level of the directory. You will be sent to the Virtual Keyboard to enter the new folder name. There is a limit of 1000 files per folder.



29

#### 7.3.3 Contextual Menu while in the Double Browser



Source

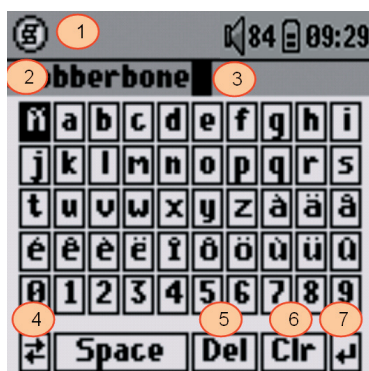
Destination

By using the unique Archos double browser system, you can copy or move files from one location in the file structure to another (caution: there is a limit of 1000 files per folder). While in the Browser mode, you simply click the RIGHT control and a second browser panel will open. You can jump between the two panels using the LEFT/RIGHT buttons. When the title of the folder is highlighted, this is the active folder. The file highlighted within this active folder will be copied, that is to say, it is the source for the copy. The other panel will be the destination folder. Once you have decided on the destination folder, move to the source browser panel, highlight the file to copy, and then click on the MENU button. You can now choose **Copy** to copy the highlighted file, **Copy All** to copy all the files in that folder to the destination folder, or **Move** to move it to the destination folder. Other options such as **Info**, **Delete**, **Rename** and **Create Folder** are addressed above.

### 7.4 Using the Virtual Keyboard

If you want to create folders and rename files or folders, it is recommended to do so from your computer when it is connected to the Gmini. The computer keyboard is easier to use. At times, however, you are not near your computer and you would like to enter the text directly with the Gmini. For this, you will use the Virtual Keyboard. You will be taken to this screen when you rename a file or folder or create a new folder. You will use the LEFT, RIGHT, UP, and DOWN controls to move around the keyboard. Click on ENTER to enter the character that is highlighted. Once your text is entered, select **Enter** on the bottom right.





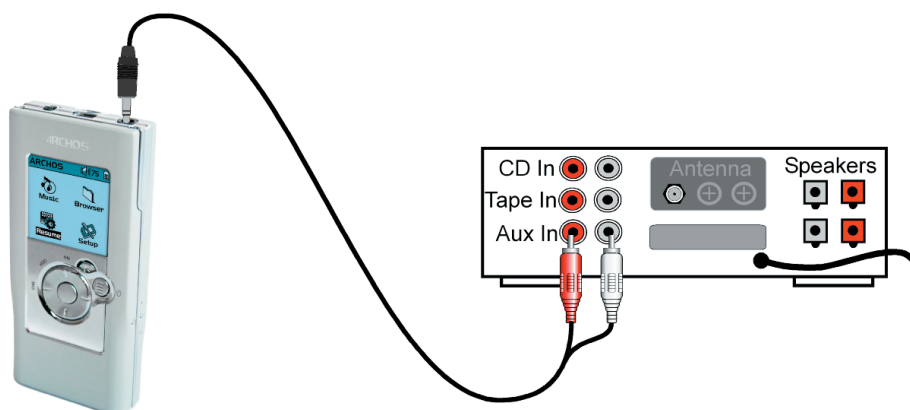
- |   |                          |   |                           |
|---|--------------------------|---|---------------------------|
| 1 | <b>Contextual Menu</b>   | 2 | <b>Text being typed</b>   |
| 3 | <b>Cursor</b>            | 4 | <b>Upper/Lower case*</b>  |
| 5 | <b>Delete character*</b> | 6 | <b>Clear entire line*</b> |
| 7 | <b>Enter</b>             |   |                           |

\* These items can also be found in the contextual menu

Tip: use the STOP/ESCAPE button to cancel any changes you made and exit the virtual keyboard.

## 8 Connecting the Gmini™ XS100 to a Stereo system

Connecting your Gmini XS100 to a stereo system allows you to listen to your Gmini's music on it without a headset. You will need a standard (mini headphone to RCA) audio cable for this which is not supplied with the Gmini. The diagram below illustrates the setup. Plug the audio cable into the headphone jack and into the auxiliary jacks on your stereo. Note that this is only a schematic representation of a stereo. If in doubt, the manual of your stereo will enable you to identify the auxiliary inputs.

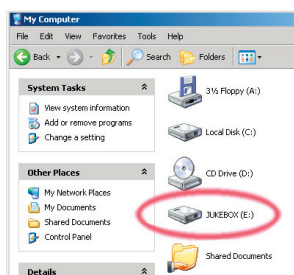


## 9 Connecting the Gmini™ to your Computer

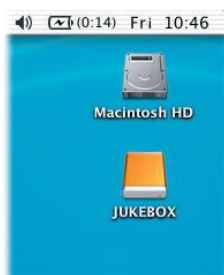
### 9.1 Making the USB Connection

Windows® ME, 2000, XP and Mac OS 10.2.4 or better will automatically recognize the Gmini as a **Mass Storage Device** when plugged in.

1. Plug the supplied USB cable into your running computer.
2. With the GminiXS100 off, plug the other end of the USB cable into your Gmini
3. Turn on your Gmini.
4. A new hard drive named “**JUKEBOX**” will appear on your computer.



Windows®



Macintosh®

- The displayed hard drive is the hard drive of your Gmini. You can now drag and drop any files you want, to or from the Gmini
- Please also read the disconnection procedure below as disconnecting the cable at any time without warning may cause data loss.

33

### 9.2 Using the Gmini™ as an External Drive

As the Gmini acts like a regular hard drive when connected to your computer, getting your files to the Gmini is as easy as copy and paste. Simply connect your Gmini to your computer as explained previously and run Windows® Explorer (or use the Macintosh Finder™). Now, go to your computer's hard drive, and copy (Right mouse click, then select Copy) a music file or a folder full of files. Next, open up the hard drive named **JUKEBOX** on the PC, open the folder you want to copy the files to, and then right-click the mouse and select Paste. For Macintosh® or Windows® you can open two windows on the desktop, one being the source (your computer's hard drive) and the other your destination (the Gmini hard drive), and then simply drag and drop files or folders from one window to another. Note that music purchased on the Internet must be transferred using Windows Media® Player.

### 9.3 Disconnecting the Gmini™ from your Computer

**WARNING: You must properly remove (unmount) your Gmini from the computer before disconnecting the USB cable to avoid loss of data or freezing the computer and/or the Gmini. DO NOT SIMPLY PULL OUT THE USB CABLE!!!**

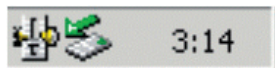
#### 9.3.1 Windows®

To safely unmount the Gmini hard drive, click on the system tray remove icon (green arrow as shown below) and follow the instructions. Wait until you get a message saying that you can safely unplug the device before disconnecting the USB cable. Attention: The operating system will not allow you to safely disconnect the Gmini if a running application (such as Windows Media® Player) is using one of the files. You will have to close all the open Gmini files in any running application as well as Windows Explorer®. Using the green disconnect arrow icon in the system tray will then allow you to unmount the Gmini and to safely disconnect the USB cable.

1. The safe remove icon is in the system tray near the system clock.



Windows® XP



Windows® 2000 & Windows® ME

2. Click on the icon to Eject (unmount) the Gmini from your computer and then select the 'Safely remove' message.



3. There will be a message indicating that it is now safe to disconnect the Gmini. You can now go ahead and unplug the USB cable from the Gmini.



### 9.3.2 Macintosh®



First, close all programs that are using files from your Gmini. Drag the Gmini hard drive icon towards the trash can, and the trash can will become a big arrow as shown in the screen image. Drop the hard drive icon onto the arrow. The hard disk icon will disappear from the desktop. You can now safely unplug the USB cable from your Gmini and/or your computer.

35

## 10 Using iTunes™ with your Gmini™ XS100



The easiest way to transfer music files between a Macintosh® computer and your Gmini XS100 is to use the Macintosh Finder™ to drag and drop the files to and from your Macintosh®.

However, for Macintosh® users who do want to use the Gmini XS100 with iTunes®, Archos has developed a special i-Tunes® plug-in. You will find it in the folder **/Data/i-Tunes Plug-in** on the Gmini XS100 hard disk or from the Archos website. In this folder you will find a .sit compressed file.

Uncompress it and open the folder for your operating system. You will find a JPEG image illustrating where you need to copy the plug-in to. Once this is done, iTunes™ will recognize the Gmini XS100 as a 'Device'. Currently there is no plug-in for the PC version of iTunes™.

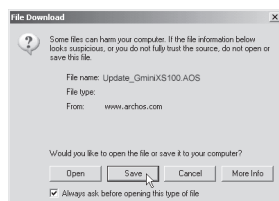
To make your user experience easy as possible, please keep in mind the following.

- 1) Music purchased at Apple's on-line music store are copy protected with a proprietary encryption system. The ARCHOS device will not be able to play this purchased music. It will happily play MP3 format files without problem.
- 2) When you create your Playlists with iTunes® (you can only create Playlists from songs that have been copied to your Gmini XS100), your Macintosh® will save these Playlists to the root directory of your Gmini. It will not save them to the Gmini Playlists directory. It would be best to use the Gmini itself to make Playlists and then save these Playlists in your Playlists folder.
- 3) When you drag and drop MP3 files from your iTunes® library to your Gmini, the i-Tunes® program will look at the ID3 tag information of the MP3 file, and create a folder on the root of your Gmini using the name of the Artist as the folder name. Then it will take the Album name ID3 tag, and create a subfolder with that album as its name. Finally, it will take the MP3 song itself and place it into that album subfolder. Thus, although it is a clean structure of artists and albums, i-Tunes® does not follow the Gmini convention of placing the music into the Music folder first.

# 11 Updating the Gmini™ XS100 Firmware

Archos periodically updates the firmware or Operating System (OS) and makes it available for free download on the ARCHOS website ([www.archos.com](http://www.archos.com)). Updates to the Operating System include new features, feature improvements, and bug fixes. You should check to make sure that you are running the most recent version of the OS. To see the current version of the software your device is running, go to **Setup > System** and look at the line **OS Version**. You will find the most recent version of the OS and its version number at the Archos website ([www.archos.com](http://www.archos.com)) under the category **Software**.

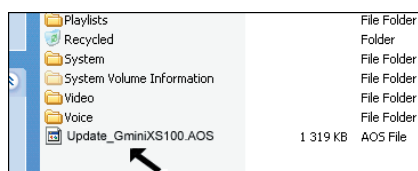
## 11.1 Download the Update\_GminiXS100.AOS file



When you click on the link to download the new OS file (the file name is **Update\_GminiXS100.AOS**), your browser may warn you that the contents of the download may harm your computer. This is because the Windows® system does not know what a.AOS file is. Be assured that Archos has made every effort to ensure that the file does not contain viruses. Click on the option **Save** to download this file to a convenient place, such as **My Documents**, in order to later copy this file to your Gmini XS100. If your Gmini is connected to your PC, you can even save it directly to the Gmini.

You will also find next to the firmware download, a text file which details the list of changes from the previous version of the OS.

## 11.2 Copy to Gmini™ root and Update



Connect your Gmini to your computer (See the chapter on connecting to the computer for help), and then copy the **Update\_GminiXS100.AOS** file to the root directory of the Gmini. The root directory is the top most level of the directory hierarchy. Just drag this.AOS file onto the Gmini XS100 Hard disk (named **Jukebox**) in your file manager and it will place it in the top most directory (outside any folder). If there is already an older version of the **Update\_GminiXS100.AOS** file on your Gmini, Windows® will ask if you want to overwrite the current file. Click on Yes.

37

Once this file is copied, safely disconnect Gmini XS100 from the computer. Refer to the disconnection procedure in the connection chapter if you are unsure of how to do this.

On your Gmini, go to **Setup > System** and select the [**Update Firmware**] line. Click ENTER. You will be prompted to power the Gmini by either the USB cable connected to a turned-on computer, or the optional adapter/charger. The Gmini will now locate the update file and install it. A message will appear asking you to unplug the USB cable (if that is how you powered it) and then click on any button to restart the device. You can go to **Setup > System** to verify the new OS has been installed by looking at the version number there.

### Warning!

**Never unplug the USB cable or DC-in adapter while the update is in progress. This can cause permanent damage to the unit.**

# 12 Troubleshooting

## 12.1 USB Connection issues

**Problem:** I cannot get my Gmini to be recognized by the computer.

**Solutions:**

- Shut off and reboot the computer and the Gmini and then try connecting again in the preferred order enumerated in the Chapter **Connecting your Gmini XS100 to your computer**.
- If using a USB hub, try connecting without using the hub (some hubs are not powered and may not work with the Gmini).
- If using a USB port in the front of your computer, try a USB port in the back. Front USB ports are often from non-powered hubs.
- Do not connect to a USB port repeated through a keyboard.
- Windows® XP and 2000: If the File Allocation Table (FAT) gets corrupted, the Gmini may not show up in Windows® XP or 2000 for over one minute, and then it comes up as **local drive**. Use DOS Utility **ChkDsk** as shown below.
- Windows® XP may recognize the Gmini disk drive but yet not assign a drive letter. Right click on My Computer and select Manage. Then select Storage and then Disk Management. Within this window you may see the Gmini hard drive and be able to assign it a drive letter. Right click on the graphic of the Gmini hard disk and select the command Change Drive Letter and Paths. Enter the next free drive letter such as E: or F:.

39

**Problem:** What do I do if I try to disconnect via the green arrow but keep getting "The device 'Generic Volume' cannot be stopped now. Try stopping the device again later."

**Solution:** Use the green arrow a second time. Sometimes Windows® does not update its status. Shut off any program that might be accessing data on the Gmini, including Windows® Explorer. If this does not work, shut down all programs, wait 20 seconds, then try the green arrow again. If this does not work, you should shut down the computer and disconnect the USB cable once the computer is off.

**Problem:** When I plug the Gmini into my computer, I do not see a new hard drive icon on the screen.

**Solution:** Use the troubleshooting section **USB Connection Issues** above.

**Problem:** I have Windows® XP and a USB 2.0 port, yet my file transfer rates are very slow.

**Solution:** The original version of XP does not have native support for USB 2.0. You must update your Windows® XP to a minimum of SP1 (Service Pack 1) in order for it to transfer files at the full USB 2.0 port capacity.

**Problem:** The Gmini shuts off by itself.

**Solution:** This is normal. If you are not playing music or using it, it will automatically shut off based on the automatic power-off parameters in the Power submenu. Go to the menu [**Setup > Power**] where you can adjust the **Power off** parameter.

**Problem:** The Gmini locks-up. None of the buttons react.

**Solution:** Did you set the Gmini to 'lock' mode? This is the mode that blocks the buttons from functioning so that you can put the Gmini in your pocket or backpack without worrying about buttons getting accidentally pressed. Hold down for three seconds on the Menu button to unlock all the buttons. The other possibility is an electrostatic phenomena. That is, static electricity has temporarily knocked out the Gmini. Hold down on the STOP button for 15 seconds and the Gmini will shut off. Restart it normally now.

**Problem:** When I go to the Music icon in the main menu, I cannot see the mp3 files or albums that I just put into the Gmini.

**Solution:** The Gmini's ARCLibrary must be refreshed. Go to **Setup > Playmode > Update ARCLibrary**. Your newly transferred files will be indexed into the ARCLibrary. Files that are not in the folder **Music** will not be included in the ARCLibrary.

## 12.2 File issues, corrupted data, formatting, and partitioning.

**Problem:** On the Gmini, I find new file names and folder names that I never created or they have strange gibberish names.

**Answer:** Most likely, the Gmini's file allocation table (FAT) has been corrupted. This could have been due to a shut down while the Gmini was connected to your computer. To fix a corrupted FAT problem, you should use the Error Checking utility or the Check Disk utility explained at the end of this section. Attention: Windows® and Macintosh® often write extra files to the hard drive such as **finder.def** or **System volume info**. These are normal and will not harm the Gmini.

**Problem:** I want to reformat the hard drive of the Gmini.

**Solution:** You can do this, but it will erase ALL of the data on your Gmini. First, as explained above, you should run ScanDisk or the DOS chkdsk (Check Disk) program to try to fix your problem. These will solve your problems 99% of the time. Note that Windows® XP and 2000 will, by default, format your Gmini hard drive in the NTFS file format. This will make the Gmini unusable. **Make sure you tell it to format the hard drive in FAT32 format.**

### 12.2.1 Windows® ME Running Scan-Disk (Error Checking)

- Quit all running applications.
- Properly connect the Gmini to your computer as explained in chapter 6.
- Make sure the external AC adapter or USB cable is powering the Gmini.
- Right click on the Gmini hard drive in Windows® Explorer and select Properties.
- Select the Tools option and run the Error checking program.
- Make sure you check the box to **automatically fix errors**.
- Be patient, this may take a while. Windows® may ask you to restart the computer to make certain Windows® files available. This is OK, click on **Yes**.

41

### 12.2.2 Windows® XP & 2000 Running Check Disk Utility (Chkdsk)

If you still have problems with the file system on your Gmini you can try to fix it using the DOS utility, check disk (chkdsk). Simply running the Windows® program Error Checking may not completely fix disk errors. Do the following;

- Make sure the external AC adapter or USB cable is powering the Gmini.
- Quit all running applications.
- Properly connect the Gmini to your computer as explained in chapter 6.
- Wait patiently (up to 5 minutes) for Windows® XP to show the **GMINI** or **local drive** as mounted.
- Using the Command Prompt utility program, open a DOS window.  
**Start > Programs > Accessories > Command Prompt.**
- At the prompt, type **chkdsk e: /f**. Use **e:** or the drive letter representing your Gmini.
- Be patient, this may take a while.
- When it is finished, exit the DOS Window and properly disconnect the Gmini from your computer.

## 13 Technical Specifications

### ARCHOS Gmini XS100 series

|                            |  |
|----------------------------|--|
| <b>Storage Capacity</b>    | See front of package.  |
| <b>Computer Interface</b>  | High Speed USB 2.0 (compatible USB 1.1)  |
| <b>Audio Playback</b>      | MP3 (Stereo, decoding 32-320 kb/s CBR & VBR), WMA, WAV (PCM), WMA DRM protected purchased downloads. (does not support subscription services. Check the Archos website for possible software upgrades for this.)   |
| <b>Screen</b>              | 128 x 128 pixels. 4 level greyscale  |
| <b>Playback Autonomy</b>   | Up to 12 hours*  |
| <b>Scalability</b>         | Free Operating System updates downloadable from ARCHOS web site  |
| <b>Audio Connection</b>    | Standard 3.5mm mini stereo headphone jack.   |
| <b>Power</b>               | Internal rechargeable Lithium-Ion battery. Charged via USB cable through the computer. Optional charger/adaptor available.   |
| <b>System Requirements</b> | Windows® ME, 2000 or XP. Mac: OS 10.2.4<br>And a computer with USB 2.0 interface (compatible USB 1.1 at a lower speed).<br>For protected WMA PlaysForSure™ downloaded files: Windows® ME, 2000 or XP with Windows Media® Player 9 or 10 and a computer with USB 2.0 interface (compatible USB 1.1 at a lower speed). |

*\*Depending on usage (stop/start/settings/file type/etc.)*

43

## 14 Technical Support

- If technical support determines that your product needs to be returned, please contact the place of purchase to have your product repaired or replaced (depending on problem type). Customers who purchased directly from the Archos web site should fill out the form on the web site under Support : Product Returns : RMA Request form.
- There is an FAQ – Frequently Asked Questions section at the ARCHOS Website [www.archos.com](http://www.archos.com), **Support: FAQ** that can help answer many of your questions.

**Please help protect the environment by taking the time to check the manual first before writing an e-mail or making a tech support call.**

#### Telephone Technical Support

|                |               |
|----------------|---------------|
| 949-609-1400   | (USA, Canada) |
| 01 70 20 00 30 | (France)      |
| 0207-949-0115  | (UK)          |
| 069-6698-4714  | (Germany)     |
| 09-1745-6224   | (Spain)       |
| 02-4827-1143   | (Italy)       |
| 02-050-405-10  | (Netherlands) |
| 01-601-5700    | (Ireland)     |

#### E-mail Support

|  |  |
|--|--|
| <a href="mailto:tech-support.us@archos.com">tech-support.us@archos.com</a> | English (United States and Canada)         |
| <a href="mailto:tech-support.eu@archos.com">tech-support.eu@archos.com</a> | English or French (and rest of the planet) |
| <a href="mailto:tech-support.de@archos.com">tech-support.de@archos.com</a> | German (Germany)                           |



## 15 Legal and Safety Notices

### Warranty and Limited Liability

This product is sold with a limited warranty and specific remedies are available to the original purchaser in the event the product fails to conform to the limited warranty. Manufacturer's liability may be further limited in accordance with its sales contract.

In general, the manufacturer shall not be responsible for product damages caused by natural disasters, fire, static discharge, misuse, abuse, neglect, improper handling or installation, unauthorized repair, alteration or accident. In no event shall the manufacturer be liable for loss of data stored on disk media.

MANUFACTURER SHALL NOT BE LIABLE FOR ANY SPECIAL, INCIDENTAL OR CONSEQUENTIAL DAMAGES. EVEN IF INFORMED OF THE POSSIBILITY THEREOF IN ADVANCE.

ARCHOS licensor(s) makes no warranties, express or implied, including, without limitation, the implied warranties of merchantability and fitness for a particular purpose, regarding the licensed materials. ARCHOS's licensor(s) does not warrant, guarantee or make any representations regarding the use or the results of the use of the licensed materials in terms of its correctness, accuracy, reliability, correctness or otherwise. The entire risk as to the results and performance of the licensed materials is assumed by you. The exclusion of implied warranties is not permitted by some jurisdictions. The above exclusion may not apply to you.

In no event will ARCHOS's licensor(s), and their directors, officers, employees or agents (collectively ARCHOS' licensor) be liable to you for any consequential, incidental or indirect damages (including damages for loss of business profits, business interruption, loss of business information, and the like) arising out of the use of inability to use the licensed materials even if ARCHOS' licensor has been advised of the possibility of such damages. Because some jurisdiction do not allow the exclusion or limitation of liability for consequential or incidental damages, the above limitations may not apply to you.

Please see your sales contract for a complete statement of warranty rights, remedies and limitation of liability.

45

Furthermore, warranty does not apply to:

1. Damages or problems resulting from misuse, abuse, accident, alteration or incorrect electrical current or voltage.
2. Any product tampered-with or damaged warranty seal or serial number label.
3. Any product without a warranty or serial number label.
4. Batteries and any consumable items delivered with or in the equipment.

### Warnings and Safety Instructions

#### **CAUTION**

To prevent risks of electric shock, this unit must only be opened by qualified service personnel.

Power off and disconnect the power supply cable before opening the unit.

#### **WARNING**

To prevent fire or shock hazard, do not expose the unit to rain or moisture.

Use of this product is for personal use only. Copying CDs or loading music, video, or picture files for sale or other business purposes is or may be a violation of copyright law. Copyrighted materials, works of art, and/or presentations may require authorization to be fully or partially recorded. Please be aware of all such applicable laws concerning the recording and use of such for your country and jurisdiction.

#### **SAFETY**

For driving safety, only a passenger should operate the device when the car is in motion and not the driver. Laws governing the usage of electronic devices by the driver may be applicable in your jurisdiction and/or country.

46

### FCC Compliance Statement

#### FCC Compliance

This equipment has been tested and found to comply with limits for a Class B digital device, pursuant to Part 15 of the FCC Rules. These limits are designed to provide reasonable protection against harmful interference in a residential installation. This equipment generates, uses and can radiate radio frequency energy and, if not installed and used in accordance with instructions, may cause harmful interference to radio communications. However, there is no guarantee that interference will not occur in a particular installation. If this equipment does cause harmful interference to radio or television reception, which can be determined by turning the equipment off and on, the user is encouraged to try to correct the interference by one or more of the following measures:

- Reorient or relocate the receiving antenna.
- Increase the separation between the equipment and receiver.
- Connect the equipment into an outlet on a circuit different from that to which the receiver is connected.
- Consult the dealer or an experienced radio/TV technician for help.

**CAUTION: Modifications not authorized by the manufacturer may void users authority to operate this device.**

**FCC Part 15 - Operation is subject to the following two conditions:**

- 1 This device may not cause harmful interference;**
- 2 This device must accept any interference received including interference that may cause undesired operation.**

### Electrostatic Discharge

Note: During electrostatic discharge, the product may malfunction. You must reset it to return it to normal operation. The Gmini XS100 reset is actuated by pressing and holding the STOP/ESC button for 15 seconds. The unit will power off. Restart normally.

### Avoiding Hearing Damage

This product respects the current regulations for limiting the output volume of consumer audio devices to a safe level. By listening to your device with headphones or earbuds at high volumes, you run the risk of permanent damage to your ears. Even if you get used to listening at high volumes and it seems normal to you, you still risk the possibility of damaging your hearing. Reduce the volume of your device to a reasonable level to avoid permanent hearing damage. If you hear ringing in your ears, reduce the volume or shut off your device. This device has been tested with the Archos supplied earphones. Other manufactures earphones may produces volume levels higher or lower than the Archos delivered earphones.

### Copyright Notice

Copyright ARCHOS © 2005 All rights reserved.

This document may not, in whole or part, be copied, photocopied, reproduced, translated or reduced to any electronic medium or machine-readable form without prior consent, in writing, from ARCHOS. All brands and products names are registered trademarks and the property of their respective owners. Specifications are subject to change without notification. Errors and omissions accepted. Images and illustrations may not always match contents. Copyright © ARCHOS. All rights reserved.

Disclaimer of warranty: to the extent allowed by applicable law, representations and warranties of non-infringement of copyrights or other intellectual property rights resulting from the use of the product under conditions other than as here above specified, are hereby excluded.