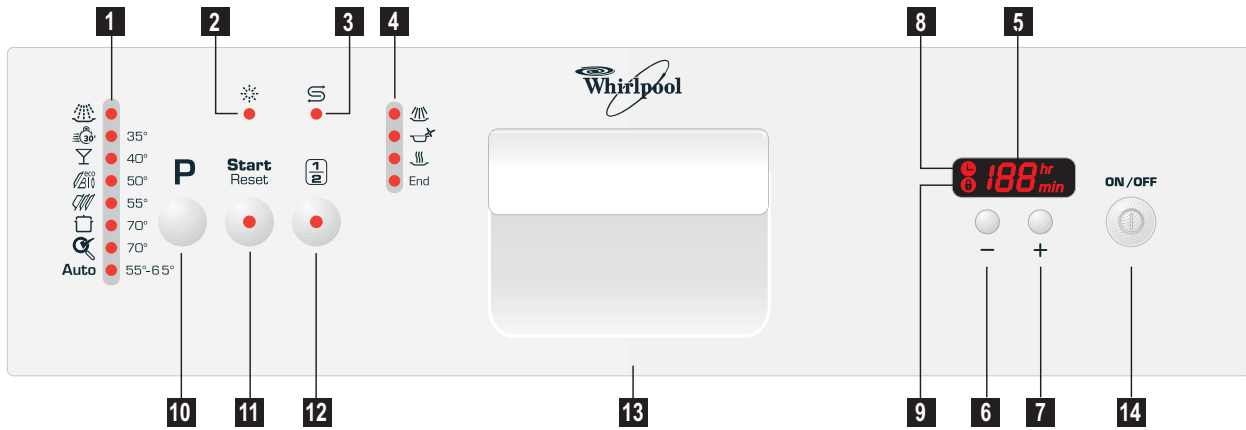


⚠ Attention

Please read the operating manual prior to operating the machine for the first time.



- 1** Programme lights
- 2** Rinse aid level indicator light
- 3** Salt level indicator light
- 4** LED progress indicator lights
- 5** Display
- 6** (-) Button
- 7** (+) Button
- 8** Time pre-selection
- 9** Key lock
- 10** Programme selection button
- 11** Start/Pause button
- 12** Half Load (1/2) button
- 13** Door handle
- 14** On/Off button

How to use your dishwasher:

Open the water tap.

Plug to the mains.

- Open the door and load the dishwasher. Check if both upper and lower spray arms move freely.
- Fill enough detergent into the detergent dispenser and close the door.
- Use the on / off button to turn the machine on.
- Check the salt and rinse aid level indicator lights. If necessary, refill salt and/or rinse aid.
- Use the programme selection button to choose your washing programme.
 - The display will show you the duration of the selected programme.
 - When there are few dishes, additionally use the Half Load button.

- Start the programme with the start / pause button:

⚠ Attention

Avoid opening the door during the washing process. This interrupts the washing process, and hot steam will escape. When the door is closed, the programme will continue.

- Use the on / off button to turn the machine off again. When the progress indicator light "programme end" lights up, the programme is complete.
- Close the water tap. Pull out the plug.
- Allow your dishes to cool for 15 minutes, with the door open. Unload the dishes. Begin with the lower basket.

PROGRAMME TABLE

Programme number	1	2	3	4 Reference **	5	6	7	8
Programme name	Pre-wash	30 Min.	Delicate	Bio	Normal	Intensive	Hygiene+	Auto
Cleaning temperature	-	35°C	40°C	50°C	55°C	70°C	70°C	55°C-65°C
Suited to	Used dishes which are to be washed at a later time	Dessert and coffee dishes with food leftovers which are not dried on	Glasses, dessert and coffee dishes with food leftovers which are not dried on	Normally dirty dishes with starch containing food leftovers which are not dried on	Normally dirty dishes with food leftovers which are not dried on	Especially dirty dishes with food leftovers which are dried on	Dishes with food leftovers which are dried on especially hard; dishes which are to be cleaned with an unusual amount of heat	Normally dirty dishes with food leftovers which are dried on
Degree of dirtiness	-	Few	Few	medium	medium	High	High	medium to high
Detergents								
15 cm ³	-	x	-	-	-	-	-	-
15-25 cm ³	-	-	x	x	x	x	x	x
+ 5 cm ³	-	-	-	x	x	x	x	-
Programme process	Pre-wash ▼ End	35°C wash ▼ Cold rinse ▼ Cold rinse ▼ Dry ▼ End	Pre-wash ▼ 40° wash ▼ Clear rinse ▼ Clear rinse ▼ Dry ▼ End	Pre-wash ▼ 50° wash ▼ Clear rinse ▼ Clear rinse ▼ Dry ▼ End	Pre-wash ▼ 55° wash ▼ Clear rinse ▼ Clear rinse ▼ Dry ▼ End	50°C Pre-wash ▼ 70° wash ▼ Cold rinse ▼ Cold rinse ▼ Dry ▼ End	50°C Pre-wash ▼ 70° wash ▼ Cold rinse ▼ Cold rinse ▼ Dry ▼ End	The programme process is adapted to the degree to which the dishes are dirtied
Duration (min)	15	30	71	170	96	128	124	112-130
Energy (kWh)	-	0,75	0,80	1,01	1,00	1,40	1,67	1,00-1,25
Water (l)	3,4	9,6	12,4	12	12,4	17,2	15,4	9,6-18,4

The consumption values shown in the table were determined under standard conditions. For this reason, deviations are possible under practical conditions.

** Reference programme für test institutes

The tests in accordance with EN 50242 must be carried out with a full salt container of the water softener, a full reservoir for the rinse aid and the testing programme.

Load capacity : 10

Function buttons



On/off button

You turn your dishwasher on / off with this button. When turning on, the indicator light for the last used programme will light up.



Start / Pause button

You use this button to start the selected programme; the light on the button lights up. Stop the programme with the start / pause button if you would like to open the door once the dishwasher's washing programme is running.



Half Load (1/2) button

When there are few dishes, you press this button after pressing the programme selection button. When turning the dishwasher on, the indicator light on the button lights up. This function helps you to save water and energy.



Time pre-selection

The function button for time pre-selection allows you to delay the start time of the programmes by up to 24 hours. Use the + and – Buttons to select the desired time. Press the **Start/Pause** button.



The display shows you the time remaining until the programme starts. When the time has expired, the washing process begins. While the programme is running, the display shows the remaining time. The selected programme is shown by the programme light; the LED progress indicator lights show the active programme segment. When the programme is complete, the display shows 00.



Key Lock

The programme can be locked while your machine is in operation.

Activate the key lock by pressing the + and – buttons simultaneously for approx. 3 seconds. The key lock indicator light will light up. Repeat the procedure to turn off the key lock.



Attention

The key lock does not lock the door. You only prevent changes to the set programme.



Programme selection buttons

Use the programme selection button to select the desired programme. The corresponding programme light lights up.

Programme change

To change a running programme, press the start / pause button: The programme light turns off. Select a new programme and start it with the start / pause button: The respective programme light lights up.

Note

The new programme begins at the point at which you terminated the former programme.

Cancellation of a programme

Press start/pause button for 5 seconds. The indicator light will start flashing. The machine will drain the water inside the machine for 45 seconds. The programme is cancelled when start/stop indicator light goes off. Then, you can choose and start a new programme.

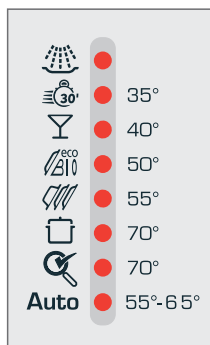


Attention

- Depending on the length of the terminated programme
- detergent and rinse aid may still be in the dispensers.

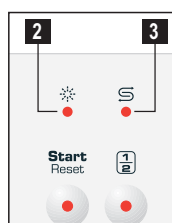
Control indicator lights

1 Programme selection

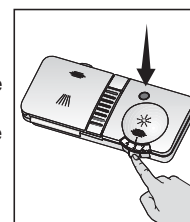


Pre-wash
30 Min.
Delicate
Bio
Normal
Intensive
Hygiene
Auto

2 Rinse aid level indicator light



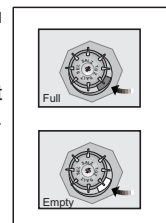
If this indicator light comes on, you have to refill rinse aid. You can also tell whether rinse aid must be refilled by looking at the rinse aid dispenser. When the visual fill indicator is dark, there is enough rinse aid in the dispenser. When the colour is light, open the dispenser and refill rinse aid.



3 Salt level indicator light



When this indicator light comes on, you must refill special salt. In machines which do not possess an electrical salt indicator, the salt content can be read on the container for the salt. When the visual fill indicator is dark, there is enough salt in the container.



When the colour is light, open the container and add dishwasher salt.

4 LED progress indicator lights



Wash
Rinse
Dry
End

During the washing process, the individual active programme segments are shown by the LED progress indicator lights.

Attention

- In the case of the rapid programme, the progress indicator light for drying does not light up.
- The washing process is only complete when the progress indicator light "programme end" lights up.

Note for Testing Institutes

The necessary information for performance testing will be provided upon request. The request can be done by e-mail through: dishwasher@standardloading.com

Please do not forget to write the model code and stock code information of the appliance besides your contact information in the e-mail. The model code and stock code information can be found on the rating label, which is placed on the side of the door.