

FUJIFILM

digital
Tools for the Imagination.

Digital Camera

FinePix 1400 Zoom

1.3
MEGA
PIXELS

3x
OPTICAL
ZOOM



Getting Ready

1

Basic Photography

2

Advanced Features

3

Advanced Features
Playback

4

Settings

5

OWNER'S MANUAL

This manual will show you how to use your FUJIFILM DIGITAL CAMERA FinePix1400 ZOOM correctly. Please follow the instructions carefully.

BB10761-200(1)



Warning

For customers in the U.S.A.

FCC Statement

This device complies with part 15 of the FCC Rules. Operation is subject to the following two conditions:(1) This device may not cause harmful interference, and (2) this device must accept any interference received, including interference that may cause undesired operation.

CAUTION

This equipment has been tested and found to comply with the limits for a Class B digital device, pursuant to Part 15 of the FCC Rules. These limits are designed to provide reasonable protection against harmful interference in a residential installation. This equipment generates, uses, and can radiate radio frequency energy and, if not installed and used in accordance with the instructions, may cause harmful interference to radio communications. However, there is no guarantee that interference will not occur in a particular installation. If this equipment does cause harmful interference to radio or television reception, which can be determined by turning the equipment

off and on, the user is encouraged to try to correct the interference by one or more of the following measures:

- Reorient or relocate the receiving antenna.
- Increase the separation between the equipment and receiver.
- Connect the equipment into an outlet on a circuit different from that to which the receiver is connected.
- Consult the dealer or an experienced radio/TV technician for help.

You are cautioned that any changes or modifications not expressly approved in this manual could void your warranty.

For customers in Canada

CAUTION

This Class B digital apparatus complies with Canadian ICES-003.

Please read the Safety Notes (⇒P.85) and make sure you understand them before using the camera.

EC Declaration of Conformity

We
Name : Fuji Photo Film (Europe) G.m.b.H.
Address : Heesenstrasse 31
40549 Dusseldorf, Germany

declare that the product
Product Name : DIGITAL CAMERA FUJIFILM FinePix1400 ZOOM
Manufacture's Name : Fuji Photo Film Co., Ltd.
Manufacture's Address : 26-30, Nishiazabu 2-chome, Minato-ku,
Tokyo 106-8620, Japan

is in conformity with the following Standards

Safety : EN60950
EMC : EN55022 : 1994 + amendement 1 Classe B
EN50082-1 : 1992
EN61000-3-2 : 1995

following the provision of the EMC Directive (89/336/EEC, 92/31/EEC and 93/68/EEC) and Low Voltage Directive (73/23/EEC).



Dusseldorf, Germany

February 1, 2000

Place

Date

Signature/Managing Director



Bij dit produkt zijn batterijen geleverd. Wanneer deze leeg zijn, moet u ze niet weggooien maar inleveren als KCA

Contents

Warning	2
EC Declaration of Conformity	3
Preface	6
Camera Features and Accessories	7
Nomenclature	8

1 Getting Ready

ATTACHING THE STRAP	11
SELECTING THE POWER SUPPLY	12
• Using Batteries	12
• Using the AC Power Adapter	13
LOADING AND REMOVING THE SmartMedia™	14
• SmartMedia™	14
• Loading the SmartMedia™	14
• Removing the SmartMedia™	15
SWITCHING ON AND OFF	16
SETTING THE DATE AND TIME	17

2 Basic Photography

4 TAKING PICTURES	19
--------------------------	----

USING AF/AE LOCK	25
FRAMING GUIDELINE FUNCTION	27
VIEWING YOUR IMAGES (PLAYBACK)	29
PLAYBACK ZOOM	30
MULTI-FRAME PLAYBACK	31
ERASING SINGLE FRAME	32

3 Advanced Features

USING THE FLASH	34
Auto Flash	34
Red-Eye Reduction	35
Forced Flash	35
Suppressed Flash	36
Night Scenes (Slow Synchro)	36
MACRO (CLOSE-UP) PHOTOGRAPHY	37
USING THE DIGITAL TELEPHOTO	38
SELF-TIMER PHOTOGRAPHY	39
MANUAL MODE	41
Setting the Brightness (Exposure compensation)	42
Setting the White Balance	43

4 Advanced Features Playback

ADVANCED PLAYBACK	45
PLAYBACK MENU	
ERASING SINGLE • ALL FRAMES/FORMATTING	46
SETTING AND REMOVING SINGLE-FRAME PROTECTION	48
SETTING AND REMOVING PROTECTION FOR ALL FRAMES	50
RESIZE	52
HOW TO SPECIFY PRINT OPTIONS	54
DPOF DATE SETTING	55
DPOF SET FRAME	56
DPOF TRIMMING	58
DPOF REVIEW/CANCEL	60
DPOF SET ALL/CANCEL ALL	61

5 Settings

SETUP MODE	63
SETTING THE IMAGE QUALITY/FILE SIZE	65
FRAME NO. MEMORY	66

ADJUSTING THE LCD MONITOR BRIGHTNESS	67
---	----

System Expansion Options	68
Using the USB Interface Set	69
Accessories Guide	71
Notes on Using Your Camera Correctly	73
Notes on the Power Supply	74
• Applicable Batteries	74
• Notes on the Batteries	74
• Notes on Using the AC Power Adapter	75
Notes on the SmartMedia™	76
Warning Displays	78
Troubleshooting	80
Specifications	82
Explanation of Terms	84
Safety Notes	85

Preface

■ Test Shots Prior to Photography

For particularly important photographs (such as weddings and overseas trips), always take a test photograph to check that the camera is functioning normally.

- Fuji Photo Film Co., Ltd cannot accept liability for any incidental losses (such as the costs of photography or the loss of income from photography) incurred as a result of faults with this product.

■ Notes on Copyright

Images recorded using your digital camera system cannot be used in ways that infringe copyright laws without the consent of the owner, unless intended only for personal use. Note that some restrictions apply to the photographing of stage performances, entertainments and exhibits, even when intended purely for personal use. Users are also asked to note that the transfer of memory cards containing images or data protected under copyright laws is only permissible within the restrictions imposed by those copyright laws.

■ Liquid Crystal

If the LCD monitor or LCD panel is damaged, take particular care with the liquid crystal in the monitor or panel. If any of the following situations arise, take the urgent action indicated.

- If liquid crystal comes in contact with your skin
Wipe the area with a cloth and then wash thoroughly with running water and soap.
- If liquid crystal gets into your eye
6 Flush the affected eye with clean water for at least

15minutes and then seek medical assistance.

- If liquid crystal is swallowed
Flush your mouth thoroughly with water. Drink large quantities of water and induce vomiting. Then seek medical assistance.

■ Notes on Electrical Interference

Do not use this device in aircraft or hospitals. The use of this device in an aircraft or hospital can cause malfunctions in the control devices used in the aircraft or hospital.

■ Handling Your Digital Camera

This camera contains precision electronic components. To ensure that images are recorded correctly, do not subject the camera to impacts or shocks while an image is being recorded.

■ Trademark Information

- IBM PC/AT is a registered trademark of International Business Machines Corp. of the USA.
- iMac and Macintosh is a trademark of Apple Computer, Inc.
- MS-DOS and Windows are registered trademarks of the Microsoft Corporation of the U.S. registered in the USA and other countries.
Windows is an abbreviated term referring to the Microsoft Windows Operating System.
- SmartMedia is a trademark of Toshiba Corporation.
- Other company or product names are trademarks or registered trademarks of the respective companies.

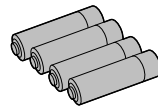
Camera Features and Accessories

Features

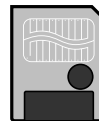
- High-quality images from the 1.31-million-pixel CCD and high-resolution Fujinon lens
- Records images at resolutions of up to 1280 X 960 pixels
- Compact, lightweight body
- 1.6-inch color LCD monitor
- Wide-angle field of view with Macro
- Built-in automatic flash with precise wide-range flash control
- Manual photography mode that allows for further flexibility.
- Digital 2 X zoom photography function and 4 X playback zoom
- Simple operation using the mode switch and easy-to-use direction buttons (“◀▶” “▲▼”)
- Framing Guideline Function makes it easy to compose professional-looking shots.
- Date and time recording/playback function
- Compatible with 3.3V, 2MB to 64MB SmartMedia
- USB connection for quick and easy image data transmission (provided as an optional accessory).
- Conforms to the new standard for digital camera file system*
* Design rule for Camera File system
- Support for DPOF* simplifies print ordering
* DPOF stands for “Digital Print Order Format”

Accessories

- LR6 AA-size alkaline batteries (4)



- SmartMedia (4MB, 3.3V) (1)
Supplied with:
 - Anti-static case (1)
 - Index label (1)



- Hand Strap (1)



- Interface Set (1)

- CD-ROM (1)
- USB Cable (1)
- Quick Start Guide (1)
- Noise Suppression core (1)

- Owner's Manual (this manual) (1)

Nomenclature

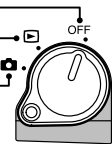
* Refer to the pages in parentheses for information on using the camera features.

Mode Switch

Power OFF

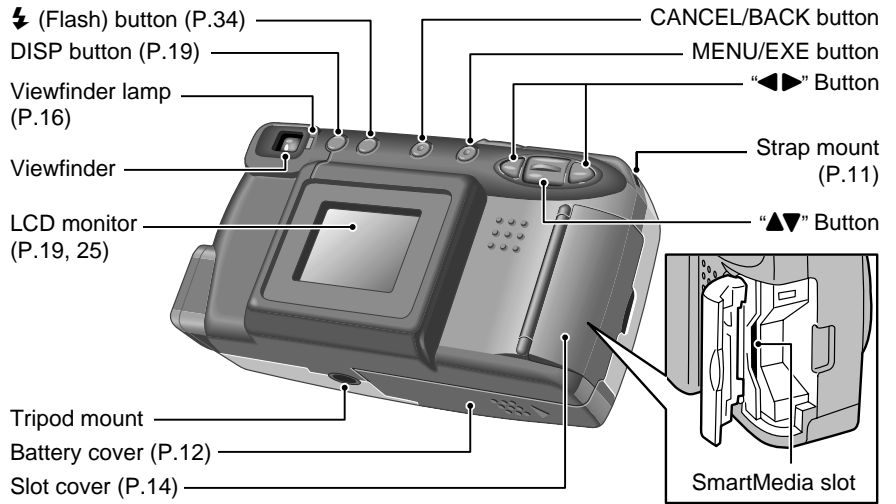
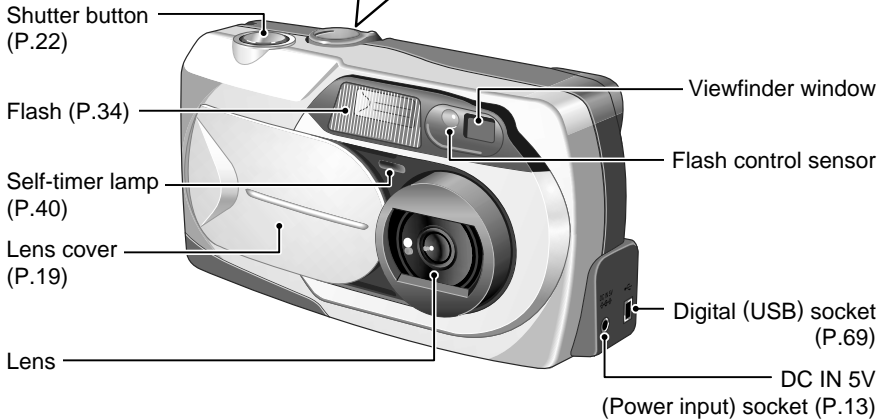
Playback mode (P.29)

Photography mode (P.19, 63)



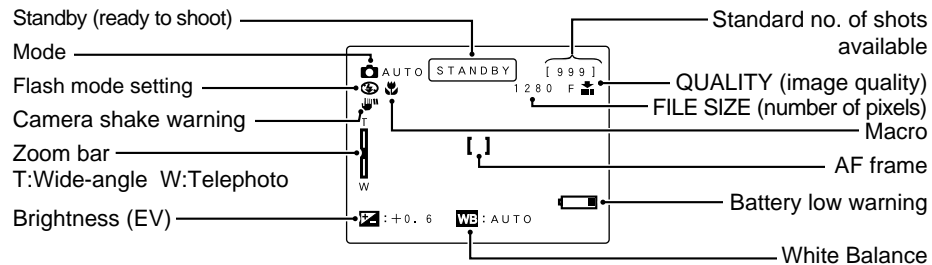
📷 (Photography) Mode
Select this setting for photography and camera setup.

▶ (Playback) Mode
This mode allows playback zoom and multi-frame playback as well as normal single-frame playback. This mode can also be used to erase frames, format SmartMedia, resize or protect images and specify DPOF settings.

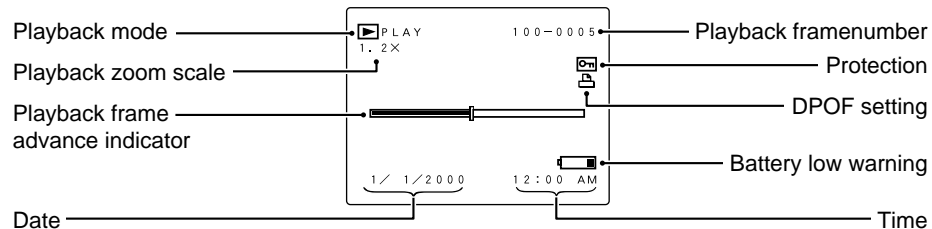


Nomenclature

Example of LCD Monitor Text Display : Shooting

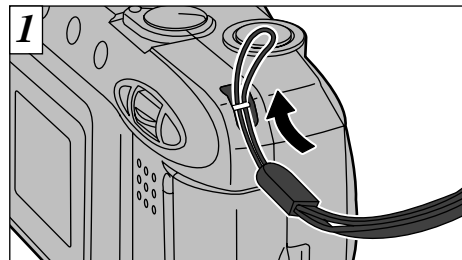


Example of LCD Monitor Text Display : Playback

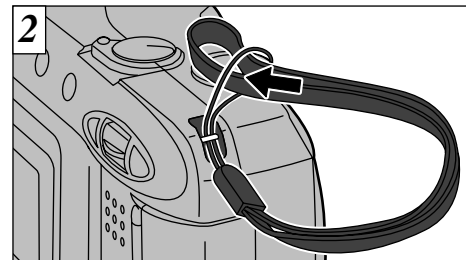


1 Getting Ready

ATTACHING THE STRAP



Pass the loop of thin cord on the end of the strap through the strap mount.



Then pass the other end of the strap through the loop of thin cord and pull the strap tight.

SELECTING THE POWER SUPPLY

Using Batteries

Use 4 AA-size alkaline, Ni-MH or Ni-Cd batteries. Do not use different types of batteries together.

■ Number of available shots (with fully charged batteries)

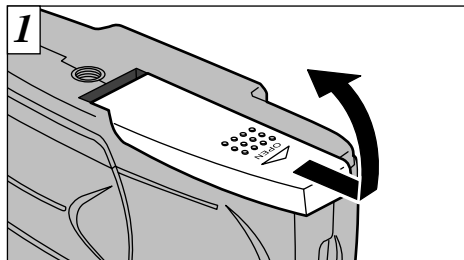
The table below provides a guide to the number of shots that can be taken at normal temperature with 50% flash use. Note that these figures may vary depending on the camera's ambient temperature and the level of battery charge.

Battery type	With LCD monitor ON	With LCD monitor OFF
Alkaline batteries	Approx.180 frames	Approx.450 frames
Ni-MH battery HR-3UF	Approx.180 frames*	Approx.450 frames*
Ni-Cd battery KR-3UF	Approx.120 frames*	Approx.350 frames*

*With fully charged battery

◆ Important Battery Information ◆

- Because different brands of alkaline batteries have different capacities, the life of some batteries (the length of time for which they can be used) may be considerably shorter than that of the alkaline batteries supplied with this camera.
- It is a characteristic of alkaline batteries in particular that the life of the battery is shorter at low temperatures (+10°C or below).
- Do not use lithium or manganese batteries in your FinePix1400 ZOOM because the heat generated by the batteries could damage the camera.



Slide the battery cover in the direction of the arrow and open the cover.

- ⚠ Do not use new and used batteries together.
- ⚠ Always switch the camera off when replacing the batteries. If the camera is left on, the camera settings may revert to the factory default settings.
- ⚠ Install replacement batteries within 5 minutes, since the camera settings are only retained for 5 minutes once the batteries are removed.
- ⚠ The Quick Battery Charger (sold separately) is needed to recharge AA-size Ni-MH or Ni-Cd batteries (→P.71).

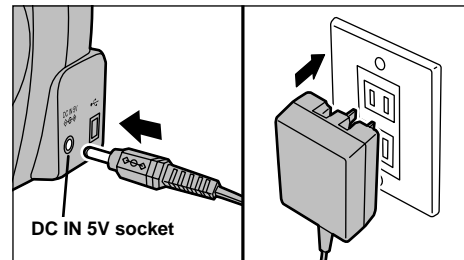


- ① Install the batteries with the correct polarity as shown.
- ② Close the battery cover as indicated by the arrow.

◆ When opening and closing the battery cover ◆

- Do not use excessive force on the battery cover.
- Take care not to drop the batteries when you open or close the battery cover.

Using the AC Power Adapter



To shoot or play back images without depleting the battery charge, use the special AC Power Adapter AC-5V (sold separately). Check that the camera is switched off and then plug the AC power adapter connector into the "DC IN 5V socket" on the camera. Then plug the AC power adapter into the power outlet.

- ⚠ You cannot charge the batteries by connecting the AC power adapter.
- ⚠ The shapes of the plug and socket-outlet depends on the country of use.
- ⚠ Using AC power adapters other than the AC-5V could damage the camera.
- ⚠ See P.75 for more information on the AC power adapter.

LOADING AND REMOVING THE SmartMedia™

SmartMedia™

■ Only use 3.3V SmartMedia.

MG-4S (4MB), MG-8S (8MB), MG-16S (16MB),
MG-32S (32MB), MG-64S (64MB)

⚠ If images are shot in 640×480 pixel mode, it is sometimes possible to record more than 1,000 frames on a 64MB SmartMedia. However, this camera will only be able to play back and specify DPOF settings for 1,000 frames, starting from the highest frame number.

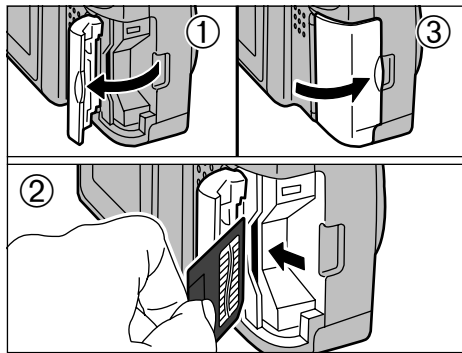
Erasing playback frames allows you to play back subsequent frames you could not previously view. Either limit your recorded frames to 1,000 or erase your unwanted images until there are 1,000 or fewer frames remaining on the SmartMedia.

Note that formatting the SmartMedia erases the images in all the frames.

- ⚠ Images cannot be recorded or erased if a write-protect sticker is affixed to the SmartMedia.
- ⚠ Operation of this camera is only guaranteed when it is used with Fujifilm SmartMedia.

⚠ Some 3.3V SmartMedia are labelled as "3V" cards.

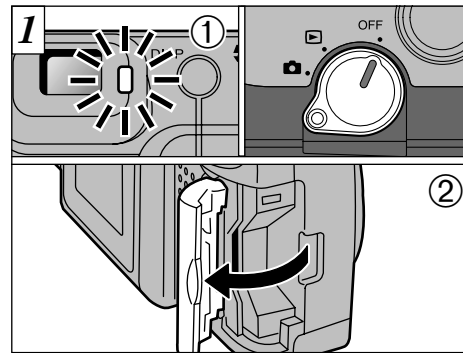
Loading the SmartMedia™



- ① Check that the camera is switched off and then open the slot cover in the direction of the arrow.
- ② Push the SmartMedia firmly into the SmartMedia slot as far as it will go.
- ③ Close the slot cover.

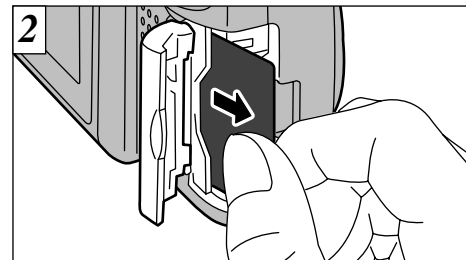
- ⚠ If you open the slot cover while the camera is switched on, the camera is automatically switched off to protect the SmartMedia.
- ⚠ The SmartMedia will not slide fully into the slot if it is inserted facing the wrong way. Be careful not to apply undue force to the SmartMedia.

Removing the SmartMedia™



- ① Check that the viewfinder lamp is lit green before you switch the camera off. (Set the Mode switch to OFF.)
- ② Open the slot cover in the direction of the arrow.

- ⚠ Always switch the camera off before opening the slot cover. Opening the slot cover while the camera is on can corrupt the image data on the SmartMedia card or damage the card itself.



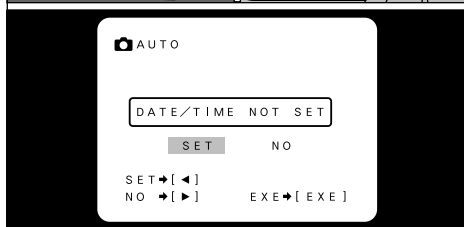
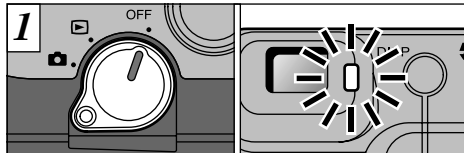
Grip the SmartMedia and pull it out.

- ⚠ To protect the SmartMedia, always store it in the special anti-static case.
- ⚠ See P.76 for more information on SmartMedia.

◆ Printing Images and Downloading Images to a Personal Computer ◆

- See P.54, 68 for information on printing your images.
- See P.68 to 70 for information on downloading your images to a personal computer.

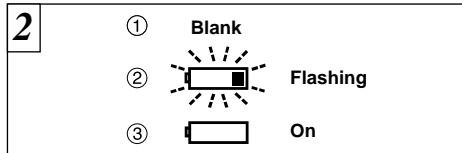
SWITCHING ON AND OFF



To switch the camera on, move the Mode switch from OFF to “” or “”. When you switch the camera on, the green viewfinder lamp lights.

To switch the camera off, set the Mode switch to OFF. If the date and time settings have been cleared, a confirmation screen appears. To set the date and time, use the “” or “” button to select “SET” and then press the “MENU/EXE” button (⇒P.18).

16 If the “**LENS COVER**” message appears on the LCD monitor, open the lens cover (⇒P.19).



With the LCD monitor on, you can check the remaining charge in the battery.

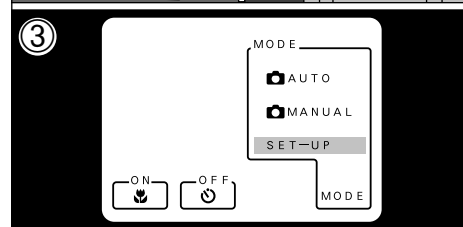
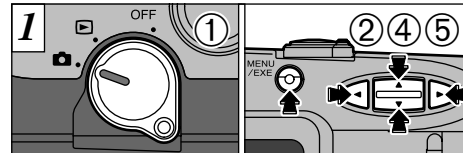
- ① Battery has ample charge. (No indicator displayed.)
- ② Battery charge low. Replace or recharge the battery as it will run out shortly.
- ③ The battery is exhausted. The display will shortly go blank and the camera will stop working. Replace or recharge the battery.

◆ Auto Power Off Function ◆

If the camera is left switched on for two minutes or more, the Auto Power Off function automatically switches the camera off. To switch the camera back on, set the Mode switch to OFF and then set it back to “” to take pictures or “” to view images. Holding down the “MENU/EXE” button as you switch the camera on disables the Auto Power Off function.

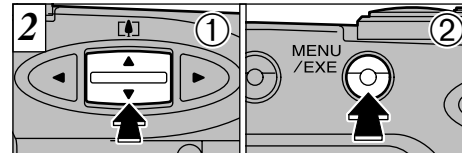
- If the date and time shown on the LCD monitor blinks, set them (next page)
- If the battery charge is depleted, you may not be able to switch the LCD monitor on.

SETTING THE DATE AND TIME



If the date and time settings are cleared when you switch the camera on, a confirmation screen appears. If you chose to reset the date and time, proceed from step 3.

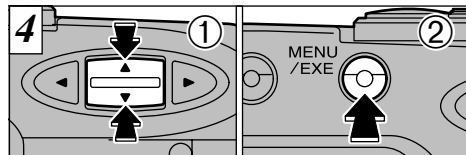
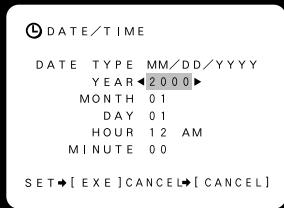
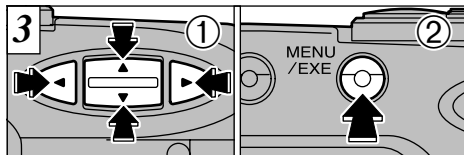
- ① Check that the lens cover is open (⇒P.19) and then set the Mode switch to “”.
- ② When you press the “MENU/EXE” button.
- ③ the menu screen appears.
- ④ Use the “” and “” buttons to select MODE and then use the “” button to select “SET-UP”.
- ⑤ press the “MENU/EXE” button.



- ① Use the “” button to select “DATE/TIME”, and
- ② press the “MENU/EXE” button.

- If you take the batteries out of the camera for 5 minutes or more, or remove the batteries during setup, the camera settings may all revert to the factory default values.
- See P.63 for more information on the SET-UP menu.

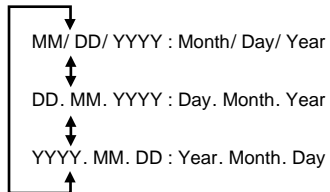
SETTING THE DATE AND TIME



To exit the "SET-UP" screen,
 ① Use the "▲▼" button to select "BACK", and
 ② press the "MENU/EXE" button.
 ⚠ The date display in Photography mode disappears about 3 seconds after you switch the camera on or take a picture.
 ⚠ After the camera has exited the "SET-UP" screen, the LCD monitor switches off.

◆ DATE TYPE ◆

Press "◀" and "▶" on the 4-way button to select the display format of the date shown on the LCD monitor.



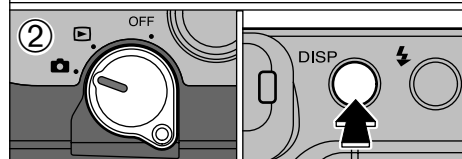
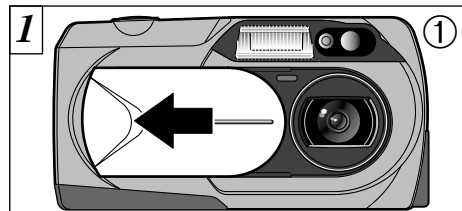
① Use the "▲▼" button to select the desired item and then use the "◀" and "▶" buttons to correct the setting.

② When you have completed the settings, press the "MENU/EXE" button.

⚠ You cannot set seconds.

⚠ When the time displayed passes "12:00:00", the AM/PM setting automatically switches.

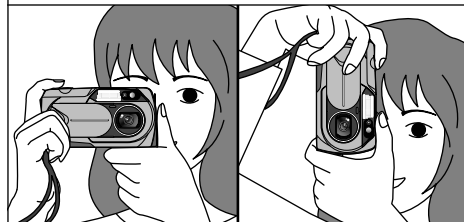
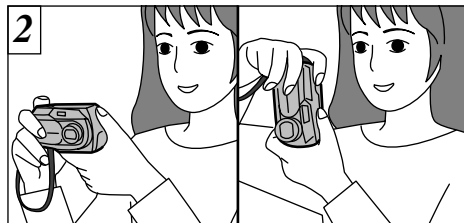
⚠ To set the time precisely, press the "MENU/EXE" button when the time is at zero seconds.



① Slide the lens cover sideways until it stops.
 ② When you set the Mode switch to "📷", the lens extends.

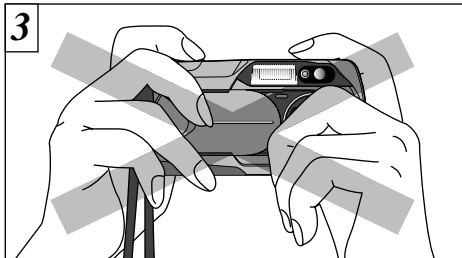
To take pictures using the viewfinder (excluding Macro Photography), To use the LCD monitor to take photographs, press the "DISP" button to switch the LCD monitor on (See P.27).

⚠ If the "LENS COVER" warning appears on the LCD monitor, the lens cover is not fully open. Slide the cover all the way open until it stops.

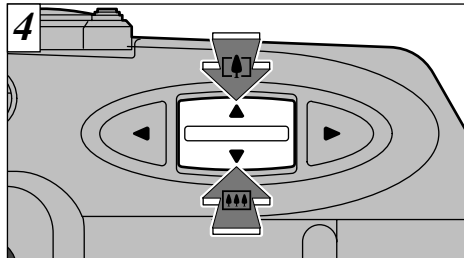


Loop the strap over your wrist, brace your elbows against your body and grip the camera firmly in both hands. When you are holding the camera on its side, hold it so that the shutter button is at the top.

⚠ Take care not to place your fingers over the lens when it extends or during shooting as this can cause a camera fault.



Ensure that your fingers or the camera strap do not obscure the lens, flash, or flash control sensor.



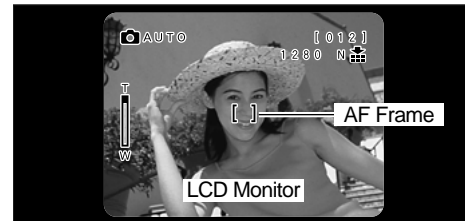
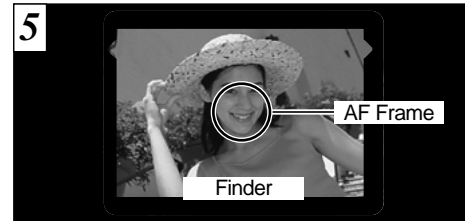
To zoom in on the subject (TELE [▲▼]), press the “▲” side of the “▲▼” button. To zoom out (WIDE [W]), press the “▼” side of the “▲▼” button. A “zoom bar” is displayed on the LCD monitor.

The optical zoom operates within this range.

● **Flash range**

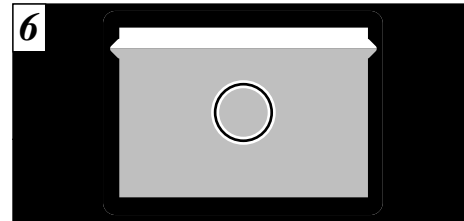
- Wide-angle : 0.2m to 3.5m (2.6ft-11.5ft)
- Telephoto : 0.8m to 3.5m (7.9in-11.5ft)

- ⚠ The zoom bar display goes off after 3 seconds.
- ⚠ The lens on the FinePix1400 ZOOM is a 3X zoom lens with a focal range equivalent to 38-114mm on a 35mm camera.



Using the viewfinder or LCD monitor, frame your shot so that the subject fills the entire AF (Auto Focus) frame.

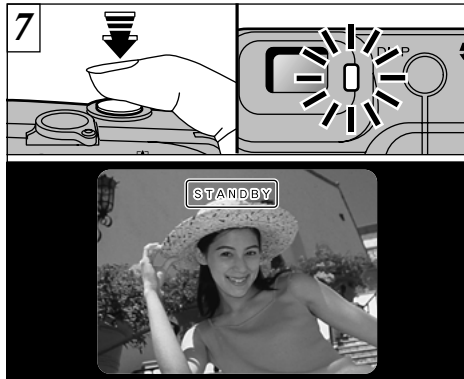
- ⚠ If the subject is not in the AF frame, use AF/AE lock to take the picture (→P.25).
- ⚠ In dimly lit scenes where the subject is difficult to see using the LCD monitor, use the viewfinder to take the picture.




When you are using the viewfinder to take a picture at a distance of 0.8 to 1.5 meters (2.6 to 4.8ft), only the shaded area in the figure is photographed.

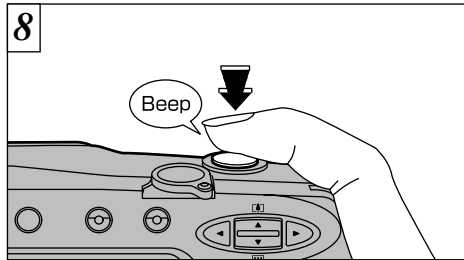
- ⚠ Shooting using LCD monitor is recommended when you want to do accurate adjustment of the range to be shot.
- ⚠ When the shot is taken, the date displayed on the LCD monitor disappears for roughly 3 seconds. The date cannot be displayed continuously.

- ⚠ Check that the lens is clean. If it is dirty, clean the lens as described on P.73.
- ⚠ The image will be blurred if the camera moves when you take the picture (camera shake).



Press the shutter button down halfway. Image focusing is complete when “STANDBY” appears on the LCD monitor or the viewfinder lamp glows green.

- ❗ The camera will not focus at distances of 80 cm or less even when “STANDBY” is displayed. In this situation, take the picture in “” Macro Photography (➡P.37).
- ❗ If it is too dark for the camera to focus, move at least 1.5 m (4.8 ft.) away from your subject before taking the picture.



To take the picture, press the shutter button down fully without lifting your finger off it. The camera beeps and takes the picture, and the data is then recorded.

- ❗ While the image data is being recorded, the viewfinder indicator turns orange and you cannot take pictures. Do not switch the camera off or open the battery cover or slot cover during data recording.
- ❗ The viewfinder lamp flashes orange while the flash is charging.
- ❗ Because the amount of image data recorded is not fixed and varies depending on the subject (level of image detail, etc.), the number of available shots may not decrease after the image is recorded, or may decrease by 2.
- ❗ See P.78 for information on the warning displays.

◆ **Viewfinder Lamp Display**

Color	Status	Meaning
Green	Lit	Ready to shoot
	Flashing	AF/AE operating or camera shake/AF warning.
Orange	Lit	Image being recorded onto the SmartMedia.
	Flashing	Flash charging
Red	Flashing	<ul style="list-style-type: none"> ● The lens cover is not fully open. ● SmartMedia warning No SmartMedia loaded, SmartMedia not formatted, incorrect format, write-protect sticker used, SmartMedia full, SmartMedia error. ● Lens Operation error *When the LCD monitor is switched on, details of the warning are displayed on the monitor (➡P.78).

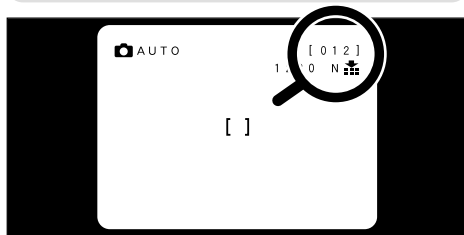
◆ **Subjects Not Suitable for Autofocus** ◆

Though the FinePix1400 ZOOM uses an accurate autofocus mechanism, it may have difficulty focusing or not be able to focus at all for the types of subject and situation listed below. In such cases, the image may be out of focus.

- Very shiny subjects such as a mirror or car bodies.
- Subjects photographed through glass.
- Subjects that do not reflect well, such as hair or fur.
- Subjects with no substance, such as smoke or flames.
- When the subject is distant and dark.
- When there is very little contrast between the subject and the background (such as white walls or subjects dressed in the same color as the background).
- When there are objects in front of or behind the subject (such as an animal in a cage or a person in front of a tree).
- Subjects moving at high speed.

📷 TAKING PICTURES

Number of available frames



The number of available shots is displayed on the LCD monitor in the location shown in the figure at left.

- See P.65 for information on changing the Quality and File Size settings.
- At shipment, the default settings are NORMAL (for Quality) and 1280 X 960 (for File Size).
- The FinePix1400 ZOOM can play back up to 1,000 image frames. Do not record more than 1,000 images on one SmartMedia. (See P.14 for details.)

■ **Standard number of shots per SmartMedia :** The number of shots that can be recorded onto a SmartMedia card varies slightly depending on the type of subject. Also, the difference between the standard number of shots and the actual number of available shots increases for SmartMedia with a higher capacity.

Pixel	1280 X 960			640 X 480		
	FINE	NORMAL	BASIC	FINE	NORMAL	BASIC
Quality Mode	FINE	NORMAL	BASIC	FINE	NORMAL	BASIC
Compression Ratio	Approx.1/4	Approx.1/8	Approx.1/16	Approx.1/4	Approx.1/8	Approx.1/16
Image Data Size	Approx.610KB	Approx.310KB	Approx.160KB	Approx.160KB	Approx.90KB	Approx.50KB
4MB (MG-4S)	6	12	23	23	44	69
8MB (MG-8S)	12	24	46	46	89	141
16MB (MG-16S)	25	49	89	89	163	246
32MB (MG-32S)	50	99	180	180	330	496
64MB (MG-64S)	101	198	361	361	663	995

📷 USING AF/AE LOCK



In a picture of this type, the subjects (people in this case) are outside the AF frame. If you take the picture at this point, the subjects will not be in focus.



Move the camera slightly so that only one of the subjects are shown in the AF frame.

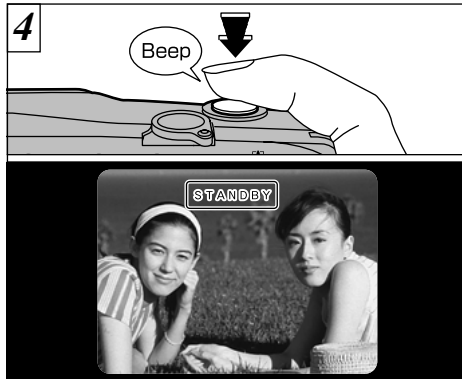
◆ AF/AE Lock ◆

On the FinePix1400 ZOOM, when you press the shutter button down half way, the focus and exposure settings are fixed (AF/AE lock). If you want to focus on a subject that is off to one side of the image or if you want to set the exposure before you compose the final shot, lock the AF and AE settings and then compose and shoot your picture to get the best results.

USING AF/AE LOCK



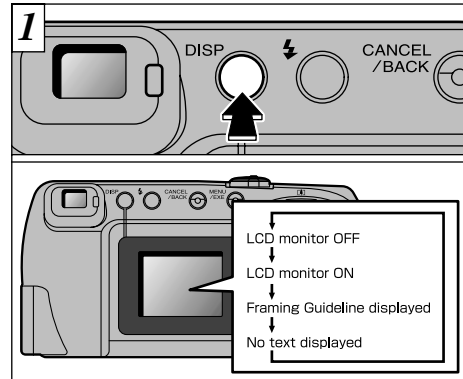
Press the shutter button down half way (AF/AE lock) and check that “STANDBY” is displayed on the LCD monitor (or that the green viewfinder lamp stops flashing and remains lit).



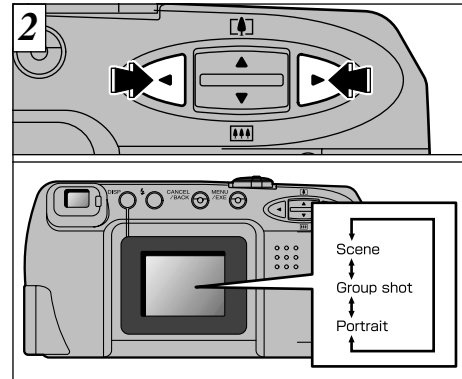
With the shutter button still held down half way (AF/AE lock), move the camera back to the original image and press the shutter button down fully.

- ⚠ You can use AF/AE lock as many times as you like before you release the shutter.
- ⚠ AF/AE lock is available in all photography modes so you can get perfect results for every shot.

FRAMING GUIDELINE FUNCTION



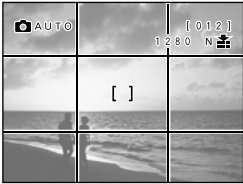

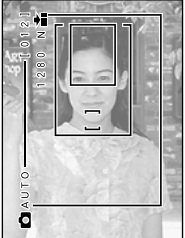
In Auto mode, the LCD monitor display changes each time you press the “DISP” button. Press the “DISP” button to display the “Framing Guideline”.



Use the “◀” and “▶” buttons to select one of the three framing guidelines. The framing guideline help you to compose your shot when you are taking pictures using the LCD monitor.

- ⚠ The framing guideline is not recorded on the image.
- ⚠ In portrait photography, use Macro mode for subjects that are 80 cms or less from the camera (→P.37).

FRAMING GUIDELINE FUNCTION

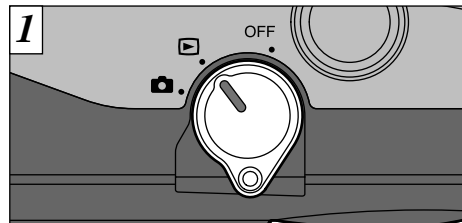
Scene	Group Shot	Portrait (Vertical shot frame)
<p>Use this frame when you want to position your main subject in center of the frame or when you want to align your shot with the horizon. This is the most effective frame for monitoring the size and balance of your subject when the shot involves motion.</p> 	<p>Use this frame when you are shooting groups of 2 or more people. By composing the shot so that your subjects are as large as possible within the frame, the photograph will clearly show their facial expressions.</p> 	<p>Use this frame for basic portrait photography. Fit the subject's face into one of the 3 frames to shoot a close-up portrait (large frame), a head and shoulders shot (middle frame), or a half-body shot (small frame).</p> 


! The lines in the scene frame roughly divide the recorded pixels into three equal parts horizontally and vertically. When the image is printed, the resulting print may be shifted slightly from the scene frame.

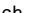

IMPORTANT

Always use AF/AE lock to compose your shot.
If you do not use AF/AE lock, your subject may be out of focus.

VIEWING YOUR IMAGES (PLAYBACK)

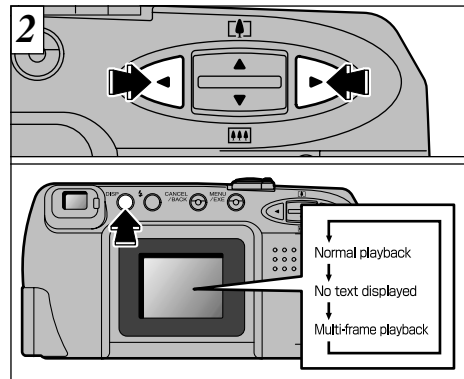


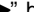

Set the Mode switch to “”.




- ! When the Mode switch is set to “”, the photographed image is displayed after you take the shot.
- ! When you close the lens cover, the lens automatically retracts. If you close the lens cover when the Mode switch is set to “”, the screen display may go blank for a moment.
- ! If image on the LCD monitor is difficult to see, adjust the LCD monitor brightness (➡P.67).

Images That Can be Viewed on the FinePix1400 ZOOM

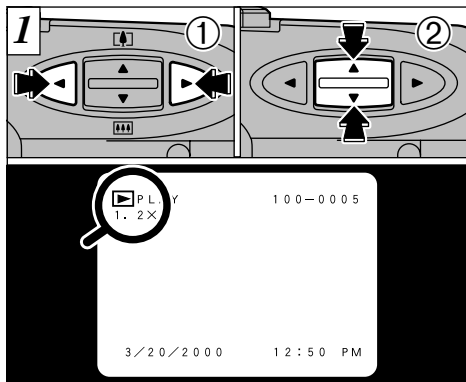
You can use this camera to view images recorded on a FinePix1400 ZOOM or images recorded onto a 3.3V SmartMedia using a Fujifilm MX series and DX series digital camera (You cannot use this camera to view video images).



Use the “” button to view the next frame, and the “” button to view the previous frame.
The LCD monitor display changes each time you press the “DISP” button.

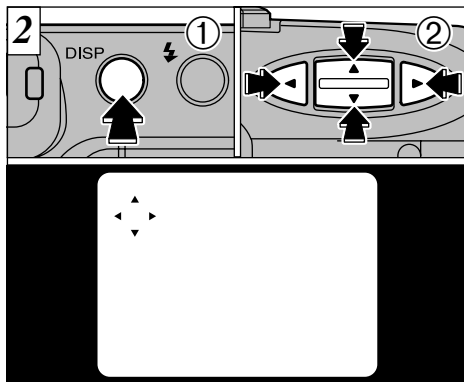
- ! If you hold the “” or “” down for about 3 seconds, the fast forward display “” appears on the LCD monitor.
- ! If your SmartMedia holds more than 1,000 recorded frames, refer to page 14.

▶ PLAYBACK ZOOM



- ① Use the “◀” and “▶” buttons to display the image you want to zoom.
- ② Use the “▲▼” button to set the zoom scale.

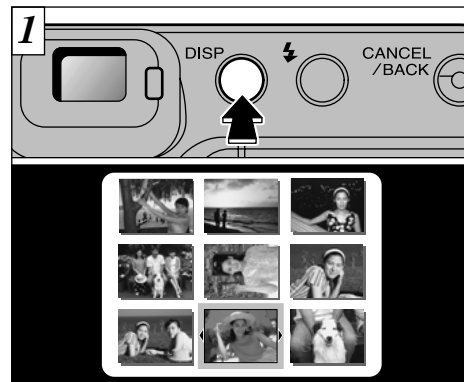
- ⚠ Zoom scales up to 4.0X can be set in 0.2X increments.
- ⚠ Pressing the “◀” (or “▶”) button during zooming cancels the zoom and displays the next (or previous) image.



- After you have zoomed in on your image,
- ① press the “DISP” button.
 - ② You can use the “◀▶” and “▲▼” buttons to zoom in on different parts of the image.

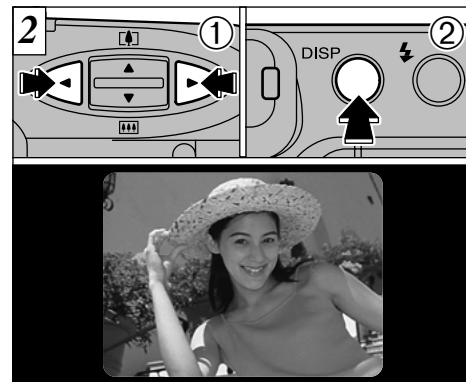
- ⚠ If you press the “CANCEL/BACK” or “MENU/EXE” button, the image reverts to normal scale.

▶ MULTI-FRAME PLAYBACK



Pressing the “DISP” button twice switches to the multi-frame (9-frame) display.

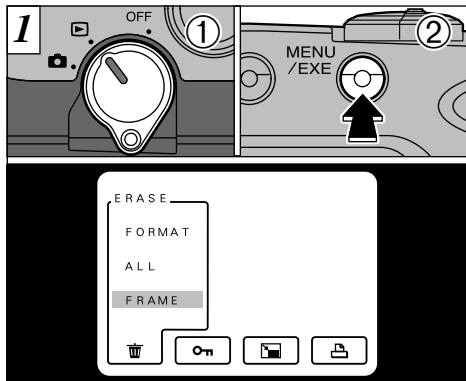
- ⚠ The message shown on the LCD monitor multi-frame display disappears after about 3 seconds.



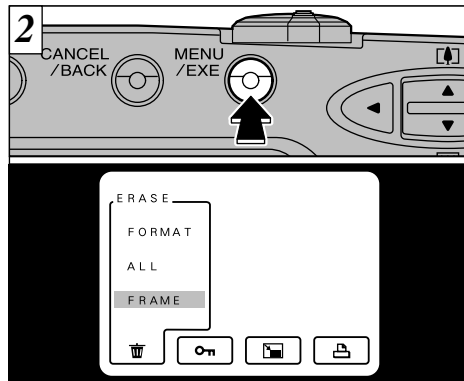
- ① Use the “◀” and “▶” buttons to move the cursor (the orange outline) to the desired frame.
- ② You can enlarge the selected image by pressing the “DISP” button again.

- ⚠ The “▲▼” button is disabled in multi-frame playback.
- ⚠ Multi-frame playback is particularly useful for selecting images for single-frame erase, single-frame protect, resizing, and DPOF frame setting or resetting.

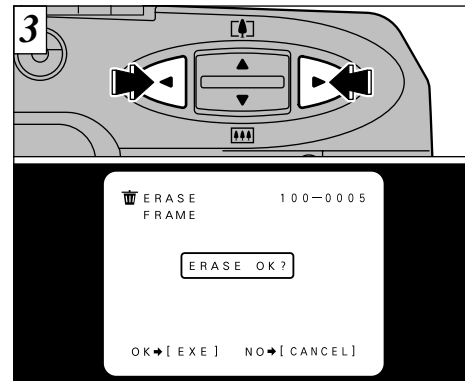
ERASING SINGLE FRAME



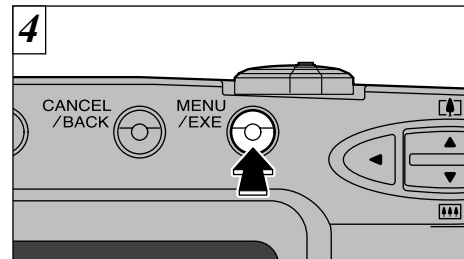
- ① Set the Mode switch to "▶".
- ② Press the "MENU/EXE" button to display the menu screen on the LCD monitor.



With "FRAME" selected, press the "MENU/EXE" button.



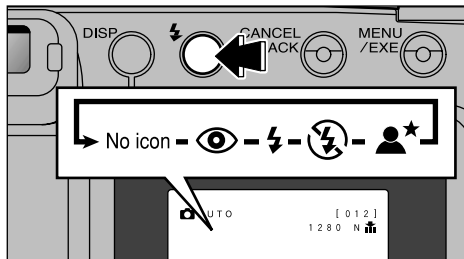
Use the "◀" and "▶" buttons to display the image to be erased.



Press the "MENU/EXE" button to erase the displayed image. When erasing is complete, the next image appears and the "ERASE OK?" message is displayed.

- ⚠ Press the "CANCEL/BACK" button to exit the menu.
- ⚠ See P.46-47 for more information on erasing all the frames on a SmartMedia and formatting SmartMedia.

- ⚠ To continue erasing images, repeat the procedure from step 3.
- ⚠ If "PROTECTED FRAME" is displayed, the image protection must be removed to erase the image (→P.48-51).
- ⚠ If the "DPOF FRAME ERASE OK?" message is displayed, DPOF is specified. When you press the "MENU/EXE" button, the image is erased and the DPOF settings are updated.



Auto Flash (no icon)

Use this mode for ordinary photography. The flash fires automatically as required by the conditions.

You can choose from 5 flash modes to suit your shot. Each time you press the “⚡” flash button, the flash mode shown on the LCD monitor changes from Auto flash (no icon displayed) to “👁️” to “⚡” to “⚡/” to “👤★”. The last mode displayed is the selected mode.

- ⚠️ When the flash mode is set to Suppressed Flash, the camera becomes ready to shoot more quickly after you switch it on.
- ⚠️ If you switch from Suppressed Flash mode to another flash mode, you may find that the displayed image disappears and the screen goes dark because the flash is charging. When this happens, the viewfinder lamp flashes orange.



👁️ Red-Eye Reduction

Use this mode to ensure that the subject's eyes appear natural when photographing people in low-light conditions. The flash fires a pre-flash just before the picture is taken and then fires again to take the actual picture.

◆ Red-Eye Effect ◆

When you use the flash to photograph people in low-light conditions, their eyes sometimes appear red in the picture. This is caused by the light of the flash reflecting off the inside of the eye. Use Red-Eye Reduction flash mode to effectively minimize the likelihood of the red-eye effect.

Take the following measures also to make Red-Eye Reduction mode more effective:

- Get the subjects to look at the camera.
- Get as close as possible to the subjects.



⚡ Forced Flash

Use this flash mode to photograph backlit scenes, such as a subject against a window or in the shade of a tree, or to obtain the correct colors when you are shooting under lighting such as fluorescent tubes. In this mode, the flash fires in bright as well as dark conditions.

⚡ USING THE FLASH



🚫 Suppressed Flash

In this mode, the flash never fires.

Use this mode when you are taking pictures in indoor lighting at distances too great for the flash to have any effect, such as theater performances or indoor sporting events. When you use Suppressed Flash, the Auto White Balance function (➔P.84) operates so that natural colors are captured along with the ambience of the available light.

- ⚠ If you want to take a picture in low-light conditions with the flash mode set to Suppressed Flash, you should use a tripod to prevent camera shake.
- ⚠ See P.23 and P.79 for information on the camera shake warning.



🌃* Night Scenes (Slow Synchro)

This mode allows you to use the flash with a slow shutter speed.

This mode allows you to take beautiful pictures that show your subject and still capture the background.

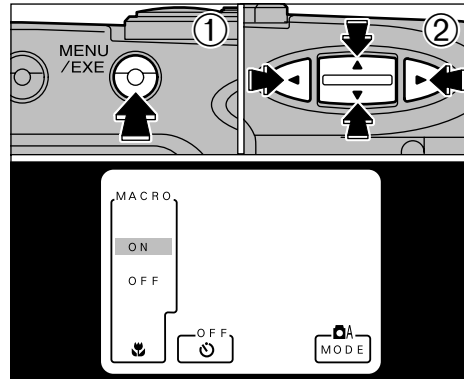
- ⚠ Because slow shutter speeds are used, you should use a tripod to prevent camera shake.

🌸 MACRO (CLOSE-UP) PHOTOGRAPHY

Macro Photography allows you to take close-up pictures of subjects as close as 10 cms from the camera.

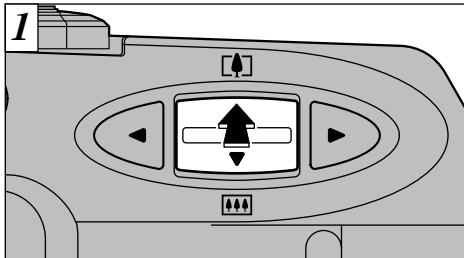
Also, set the flash functions according to the given circumstances (➔P.34).

- ⚠ If you use the viewfinder to take a picture in Macro Photography, the field visible through the viewfinder does not match the field actually photographed because the viewfinder and lens are in different positions. For this reason, you should use the LCD monitor to take pictures in Macro Photography. The LCD monitor does not switch off in Macro Photography.
- ⚠ When shooting in dark conditions, use a tripod to prevent camera shake.
- ⚠ If you are using the flash, ensure that you are at least 0.2 meters from the subject.
- ⚠ You cannot use the optical zoom in Macro Photography, but using the digital zoom is possible (➔P.38).
- ⚠ Macro Photography is cancelled when you switch the camera off.

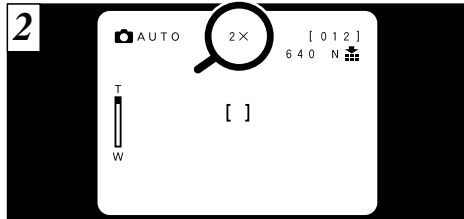


- ① Press the “MENU/EXE” button to switch to the menu screen.
- ② Use the “◀” or “▶” button to select “🌸MACRO” and then use the “▲▼” button to select ON and switch to Macro Photography. When you switch to “🌸MACRO”, the lens automatically moves to the extreme wide-angle [AAA] setting. Other settings can be changed at this point. Finally, press the “MENU/EXE” button to return to the photography screen.

USING THE DIGITAL TELEPHOTO



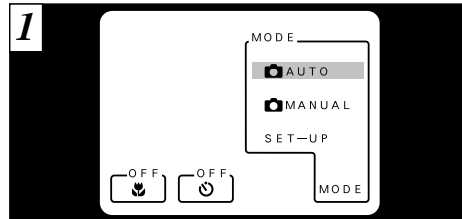
Digital zoom photography allows you to enlarge the central portion of the image by 2X. Digital zoom photography can only be used for images shot using the LCD monitor that have a file size setting of [640].



When you use the optical zoom and then press the telephoto ([]) side of the “▲▼” button, “2X” appears on the LCD monitor and the camera switches to digital zoom photography. To cancel digital zoom photography, press the wide-angle ([]) side of the “▲▼” button.

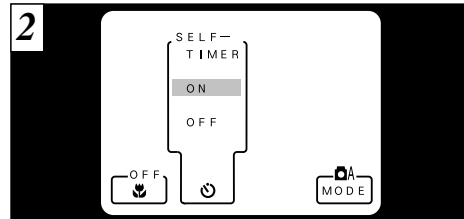
- See P.20 for more information on using the optical zoom.
- In Macro Photography, due to the optical zoom fixed to the wide-angle setting, pressing the telephoto ([]) side) of the “▲▼” button switches the camera to digital zooming.

SELF-TIMER PHOTOGRAPHY



Press the “MENU/EXE” button to switch to the menu screen.

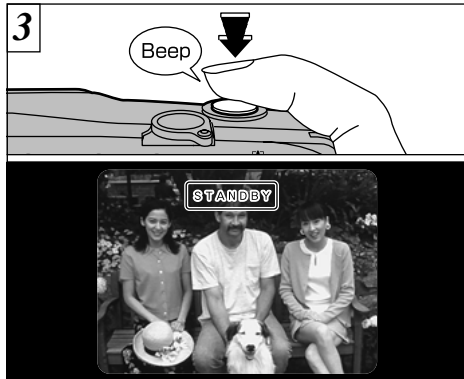
- The self-timer cannot be used in “MANUAL” mode.
- Switch the camera back to “AUTO” mode and then press the “MENU/EXE” button (→P.41).



Use the “◀▶” button to select “SELF-TIMER” and then select “ON” with the “▲▼” button to switch the camera to self-timer photography. Other settings can be changed at this point. Finally, press the “MENU/EXE” button to return to the photography screen.

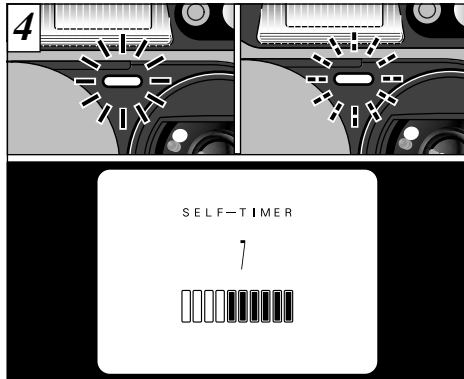
- Check that the lens is clean. If it is dirty, clean the lens as described on P.73.
- You can also use the Framing Guideline Function (→P.27).

SELF-TIMER PHOTOGRAPHY



Position the AF frame over the subject and press the shutter button. The camera focuses on the subject in the frame and self-timer starts to run.

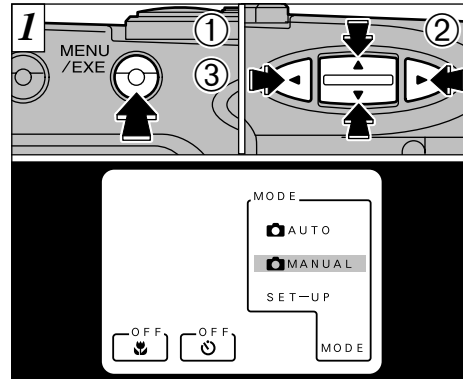
- ❗ You can also use AF/AE lock in this mode (→P.25).
- ❗ Be careful not to stand in front of the camera when you press the shutter button since this can cause focusing or light metering errors.



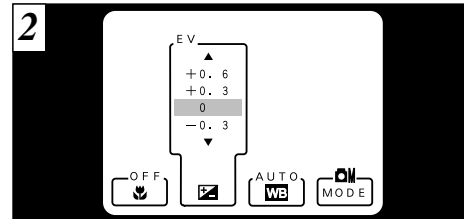
The self-timer lamp lights for 5 seconds, blinks for 5 seconds, then takes the picture. The time remaining until the picture is taken is counted down on the LCD monitor.

- ❗ Self-timer mode is cancelled after you take the picture.
- ❗ To stop the self-timer, once it has started running, press the "CANCEL/BACK" button.

MANUAL MODE

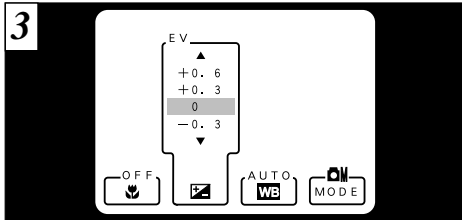


- ① Press the "MENU/EXE" button to switch to the menu screen.
 - ② Use the "◀" or "▶" button to select MODE and then use the "▲▼" button to select "📷 MANUAL".
 - ③ Press the "MENU/EXE" button to switch to Manual photography.
- ❗ Each time you press the "DISP" button, the display status switches from "Show text + images" to "Show images only" to "Show text only". If you switch the camera off in Manual mode, the display status will be "Show text only" when you switch the camera back on.



Use the "◀" and "▶" buttons to move to a menu item and the "▲▼" button to select the setting. Finally, press the "MENU/EXE" button to return to the photography screen.

- ❗ To return to Auto mode, use the same procedure to select "📷 AUTO" and then press the "MENU/EXE" button.
- ❗ You cannot use "🕒" Self-timer mode in "📷" Manual mode.



Setting the Brightness (Exposure compensation)

Use the Brightness setting to obtain the optimum image brightness (exposure) when the subject is much brighter or darker than the background.

- There are 9 compensation levels (–0.9 to 1.5 EV in approx. 0.3 EV increments). See P.84 for a definition of EV.

! To take the picture immediately, press the “MENU/EXE” button

! The Brightness setting is disabled in the following situations:

- When the flash is used in Auto or Red-Eye Reduction mode
- When dark scenes are shot in Forced Flash mode

Subjects for Which Exposure Adjustment is Particularly Effective

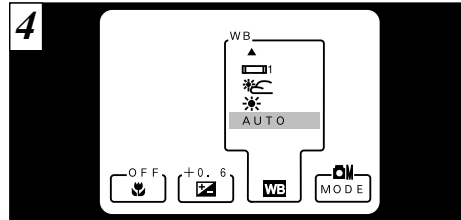
Positive (+) Compensation

- Copying of printed text (black characters on white paper) (+1.5 EV)
- Backlit portraits (+0.6 to +1.5 EV)
- Very bright scenes (such as snowfields) and highly reflective subjects (+0.9 EV)
- Shots made up predominantly of the sky. (+0.9 EV)

Negative (–) Compensation

- Spotlit subjects, particularly against dark backgrounds (–0.6 EV)
- Copying of printed text (white characters on black paper) (–0.6 EV)
- Scenes with low reflectivity, such as shots of pine trees or dark foliage (–0.6 EV)

* Settings given in parentheses are a general guide.



Setting the White Balance

Change the white balance setting when you want to take a picture with the white balance fixed for the surroundings and lighting when the picture is taken.

In Auto mode, the correct white balance may not be obtained for subjects such as close-ups of people's faces and shots taken under a special light source. In such situations, select the correct white balance for the light source. See P.84 for more information on the white balance.

AUTO : Automatic adjustment (Shooting to show the ambience of the light source)

: Shooting outdoors in fine weather

: Shooting in shade

1 : Shooting under “Daylight” fluorescent lamps

2 : Shooting under “Warm White” fluorescent lamps

3 : Shooting under “Cool White” fluorescent lamps

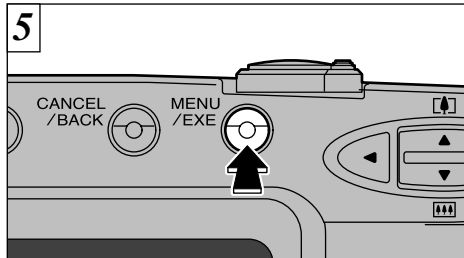
: Shooting in incandescent light

* The White Balance setting is disabled when you use the flash. If you want to use the White Balance setting to achieve a particular effect, set the flash mode to Suppressed Flash.

Factory Default Settings

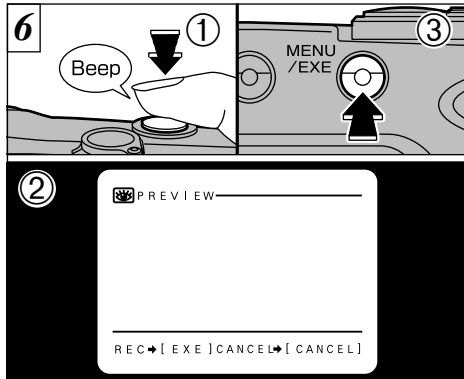
Menu	Setting
Brightness (EV)	0
White Balance	AUTO

* The above settings are the same as those used in Auto mode.



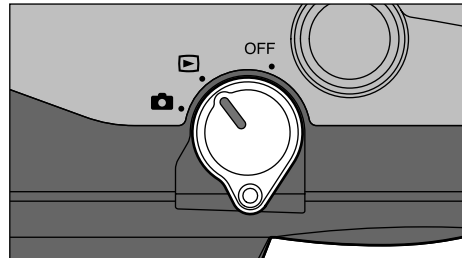
When you have finished selecting the settings, press the “MENU/EXE” button to confirm the settings. These settings are retained even when the camera is switched off.

⚠ If you take the batteries out of the camera for a long period or remove the batteries during setup, the camera settings may all revert to the factory default values.



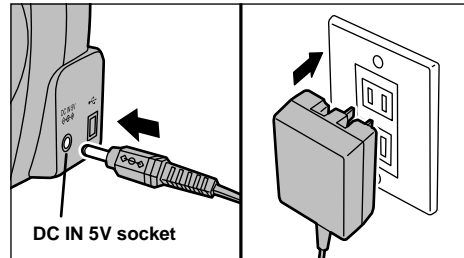
- ① Press the shutter button to take the picture.
- ② The photographed image appears on the LCD monitor.
- ③ To record the image, press the “MENU/EXE” button.

⚠ If you are not satisfied with the resulting image, press the “CANCEL/BACK” button to prevent the image being recorded on the SmartMedia. Then take the picture again.



This section introduces a range of functions that you can access when the Mode switch is set to “▶”. The explanations below all presuppose that the Mode switch is set to “▶”.

⚠ If your SmartMedia holds more than 1,000 recorded frames, refer to page 14.



If there is a power socket handy, use the special AC Power Adapter AC-5V (sold separately) so there is no need to worry about the batteries running out during playback (→P.13, 72).

⚠ The shapes of the plug and socket-outlet depends on the country of use.

**ERASING SINGLE FRAME**

Erases only the selected image.

Protected images (→P.48, 50) are not erased.

ERASE ALL

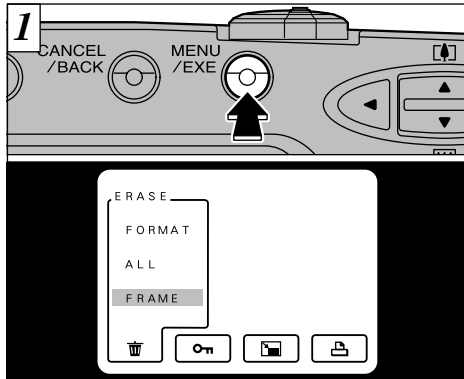
Erases all the images.

This function cannot be used to erase protected images.

FORMAT

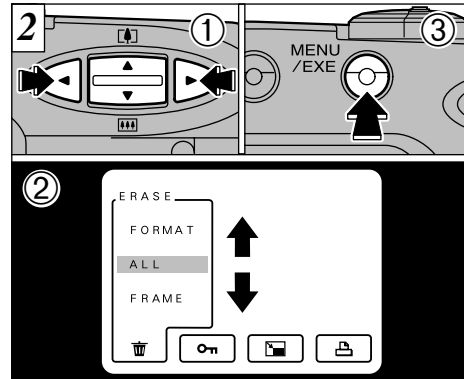
Erases all the data and reformats (initializes) the SmartMedia for use with this camera.

Protected images are also erased.



If you press the “MENU/EXE” button, the menu screen will appear on the LCD monitor.

Press the “CANCEL/BACK” button to exit the menu display.

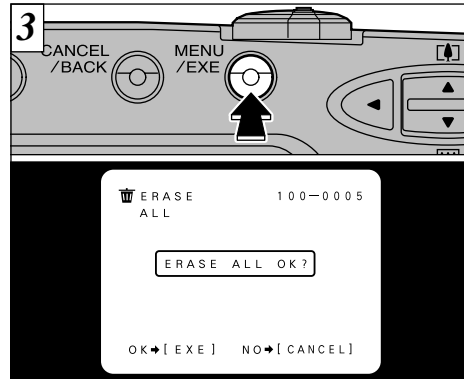


Use the “◀” or “▶” button to select “ERASE”.

Use the “▲▼” button to select “FRAME”, “ALL” or “FORMAT”.

Press the “MENU/EXE” button.

Formatting erases all of the data on the SmartMedia.



A confirmation screen appears.

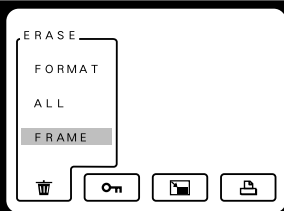
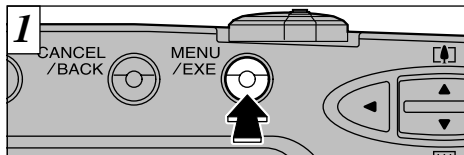
If you are erasing all the frames or formatting the card, press the “MENU/EXE” button to proceed. If you are erasing one frame, use the “◀” and “▶” buttons to select the frame and then press the “MENU/EXE” button.

If the “DPOF FRAME ERASE OK?” message is displayed, DPOF is specified. When you press the “MENU/EXE” button, the image is erased and the DPOF settings are updated.

If the “CARD ERROR” message appears, wipe the contact surfaces on the SmartMedia (the gold-colored area) with a soft, dry cloth and then re-insert it into the camera.

If this does not resolve the problem, format the card.

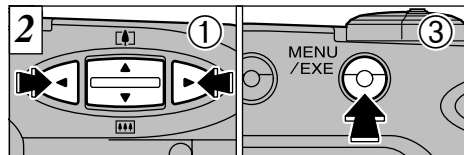
If the “CARD NOT INITIALIZED” message is displayed, format the card.



Press the “MENU/EXE” button to display the menu on the LCD monitor.

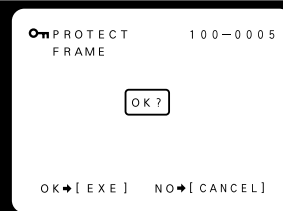
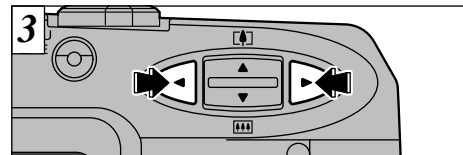
- Press the “CANCEL/BACK” button to exit the menu display.
- Multi-frame playback is an easy way to select images to be protected (⇒P.31).

“PROTECT” is a setting that prevents images from being accidentally erased. However, the FORMAT function erases all stored images, including protected images (⇒P.46).



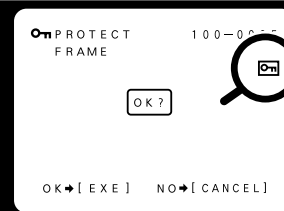
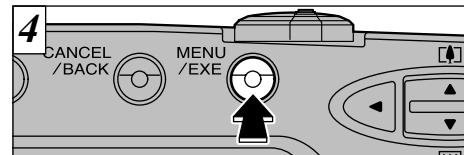
- Use the “◀” or “▶” button to select “ PROTECT”.
- Use the “▲▼” button to select “FRAME”.
- Press the “MENU/EXE” button.

- If your SmartMedia holds more than 1,000 recorded frames, refer to page 14.



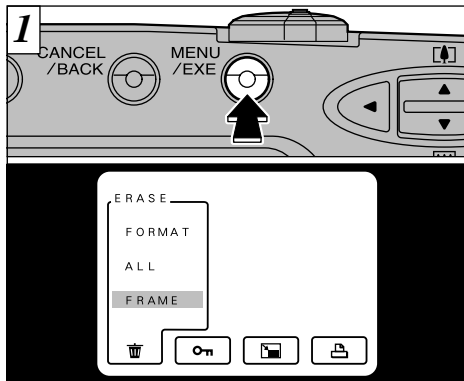
Use the “◀” or “▶” button to select the image to be protected.

- If you do not want to protect the image, press the “CANCEL/BACK” button.



When the “MENU/EXE” button is pressed, the image is protected and the “ ” icon appears on the right of the screen. To remove the protection, press the “MENU/EXE” button again. To finish setting and removing single-frame protection, press the “CANCEL/BACK” button.

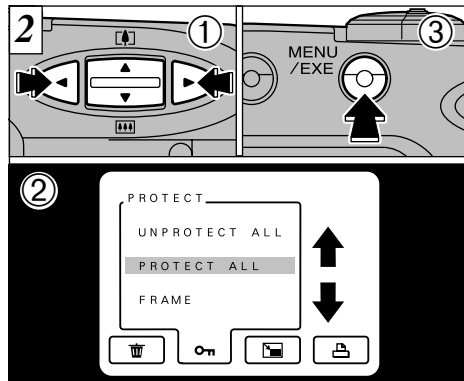
- To protect another image, repeat the procedure from step 3.
- To cancel image protection at this point, press the “CANCEL/BACK” button.
- Formatting erases all images, including protected images (⇒P.46).



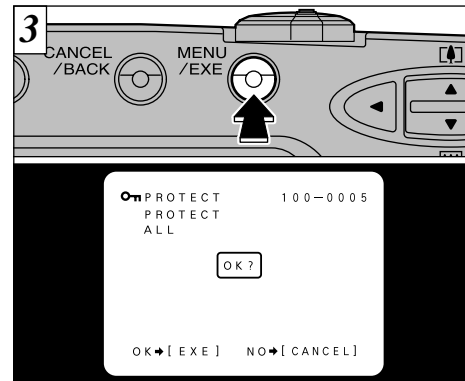
Press the “MENU/EXE” button to display the menu on the LCD monitor.

Press the “CANCEL/BACK” button to exit the menu display.

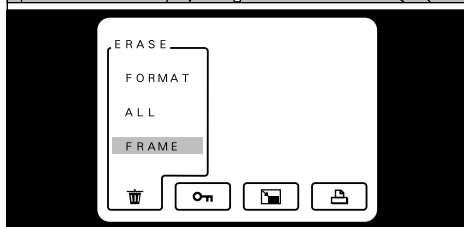
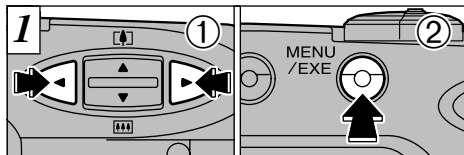
Formatting erases all images, including protected images (→P.46).



- ① Use the “◀” or “▶” button to select “ PROTECT”.
- ② Use the “▲▼” button to select “PROTECT ALL” or “UNPROTECT ALL”.
- ③ Press “MENU/EXE” button.



A confirmation screen will appear to proceed, press the “MENU/EXE” button.



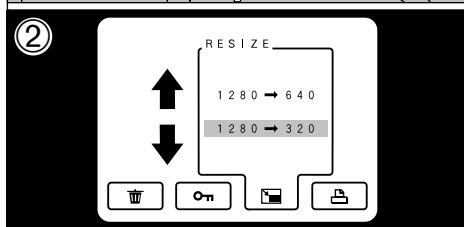
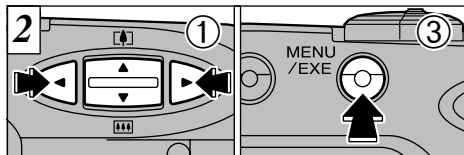
① Use the “◀” or “▶” button to display the image to be resized on the LCD monitor.

② Press the “MENU/EXE” button to display the menu.

⚠ Press the “CANCEL/BACK” button to exit the menu display.

⚠ Only images with File Size settings of [1280×960] or [640×480] can be resized.

⚠ File Size
[1280×960] → [640×480] or [320×240]
[640×480] → [320×240]



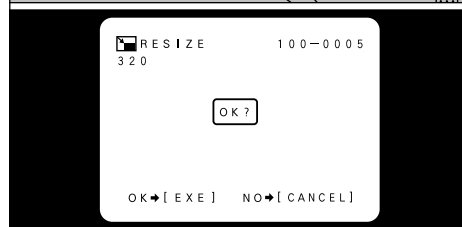
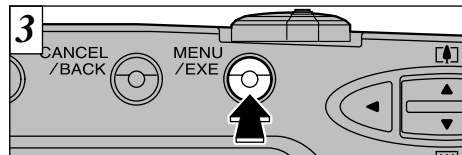
① Select “ RESIZE” (resize).

② Use the “▲▼” button to select the desired image size.

③ Press the “MENU/EXE” button.

⚠ You can only select sizes that are valid for this operation.

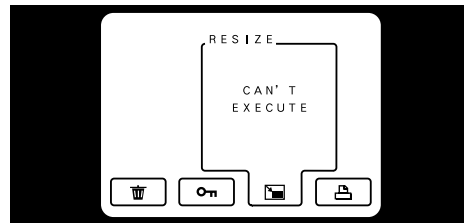
⚠ Resizing will not proceed if the “ CARD FULL” or “ PROTECTED CARD” message is displayed. If this occurs, erase some unwanted images or use a SmartMedia that is not protected.



A confirmation screen appears. To proceed, press the “MENU/EXE” button. The image is recorded to a separate file and the resulting image is displayed.

⚠ If you do not want to resize the image, press the “CANCEL/BACK” button.

⚠ See page 66 for more information on files.



If the “CAN'T EXECUTE” message appears, the photographed image size is not [1280×960] or [640×480].

⚠ An image that has been resized to [320×240] cannot be resized again. “ CAN'T EXECUTE” is also displayed if the image size as a result of step ③ is [320×240].

◆ Why Resize ◆

Resizing creates a new file containing less data.

- Resizing is extremely convenient when you want to attach an image file to an e-mail message.
- If you are uncertain which resolution to use, you can shoot the image at [1280] and then resize it later.



With the FinePix1400 ZOOM, you can order prints using the Digital Print Order Format (DPOF).

You can use the DPOF to specify the following:

- The frames to be printed and the number of prints for each frame
- Imprinting of the date and time

This section gives a detailed description of how to order your prints with the FinePix1400 ZOOM.

* Note that some printers do not support date and time imprinting or specification of the number of prints.

* Note that the warnings shown below may be displayed while you are specifying the prints.

DPOF FRAME ERASE OK? (⇒P.79)

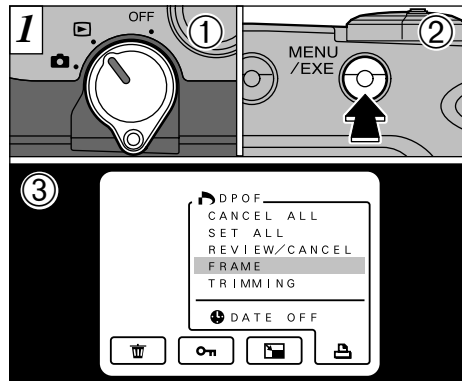
When you erase the image, the DPOF settings for that image are deleted at the same time.

RESET UNMATCHED DPOF OK? (⇒P.79)

If you load a SmartMedia that contains frames specified for printing on another camera, those print specifications are all reset and replaced by the new print specifications.

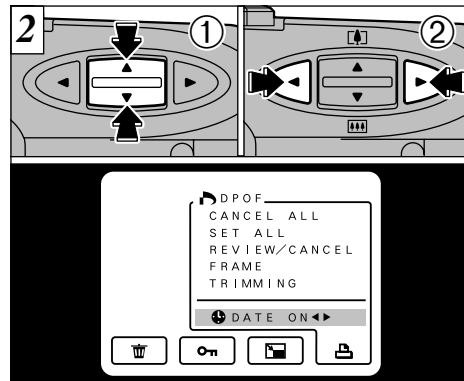
DPOF FILE ERROR (⇒P.79)

No more than 999 prints can be specified on the same SmartMedia.



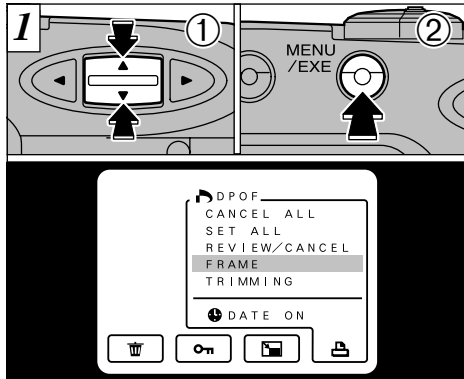
This function allows you to select whether or not the date of shooting is included on the print.

- ① Set the Mode Switch to “OFF”.
- ② Press the “MENU/EXE” button to display the menu on the LCD monitor.
- ③ Press “◀▶” button to select “DPOF”.



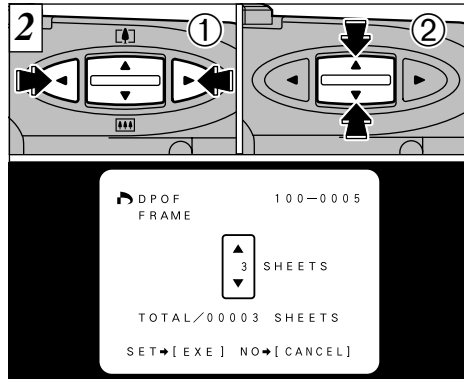
- ① Select “DATE”.
- ② Press “◀” or “▶” button to specify “DATE ON” or “DATE OFF”. This setting is then valid for all the prints until the setting is changed.

- ! Before specifying any other settings, first specify whether date is to be shown or not.
- ! TRIMMING may not be displayed for some images (⇒P.58).

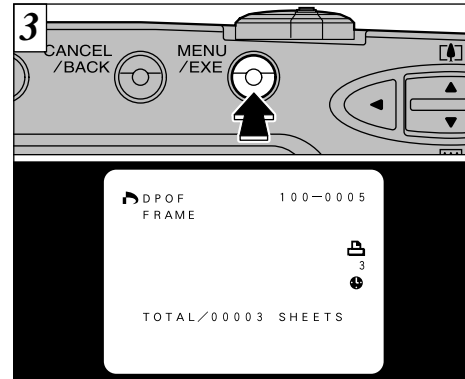


- ① Use the “▲▼” button to select “SET FRAME”.
- ② Press the “MENU/EXE” button.

- ⚠ Always select whether or not to print the date or time before specifying the DPOF setting.
- ⚠ If you specify “SET FRAME” or “TRIMMING” and then select “SET ALL”, the number of frames specified for “SET FRAME” and the “TRIMMING” setting are cancelled.


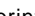


- ① Use the “◀” or “▶” button to display the frame for which you want to specify DPOF settings.
 - ② Use the “▲▼” button to specify the number of prints.
- ⚠ To continue with single-frame set, repeat steps ① and ②.
 - ⚠ You can specify up to 99 prints for each frame. Prints can be specified for up to 999 frames on the same SmartMedia.
 - ⚠ Multi-frame playback is an easy way to select images to be printed (→P.31).

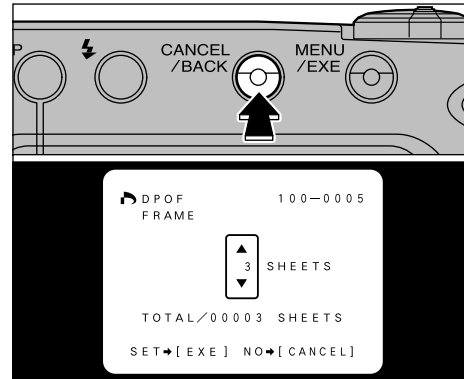


<To Continue>

When you have completed the settings, always press the “MENU/EXE” button to confirm the settings. The total number of prints is displayed on the LCD monitor and then the menu screen reappears.

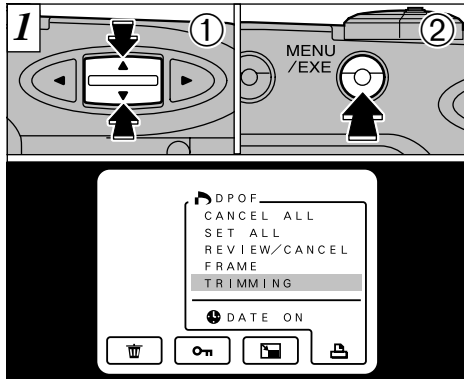
The “” icon and the number of prints are displayed for frames with DPOF specifications and the “” icon is also displayed if the date is set.

- ⚠ “TOTAL” shows the total number of prints specified.



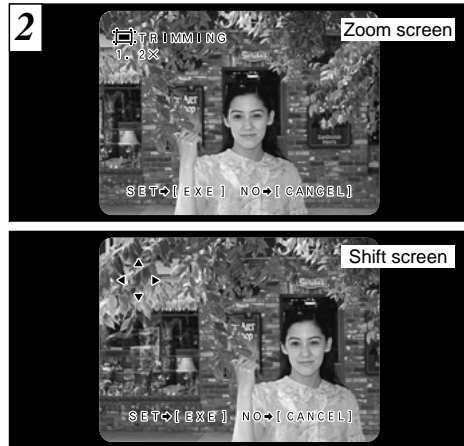
<To Cancel>

Pressing the “CANCEL/BACK” button cancels only the settings for the currently selected frame. The settings for other frames are not cancelled.



- ① Use the “▲▼” button to select “TRIMMING”.
- ② Press the “MENU/EXE” button to switch to the Trimming selection screen.

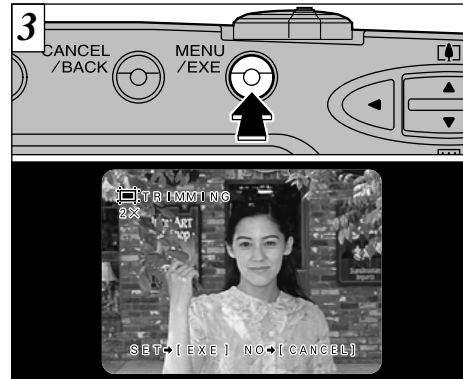
- ⚠ Display the frame to be trimmed before beginning the above procedure (→P.29).
- ⚠ Trimming can only be specified for images with a File Size setting of 1280×960.
- ⚠ When images with File Size other than 1280×960 are played back, TRIMMING does not appear on the menu.



You can alternate between the Zoom and Shift screens by pressing the “DISP” button.

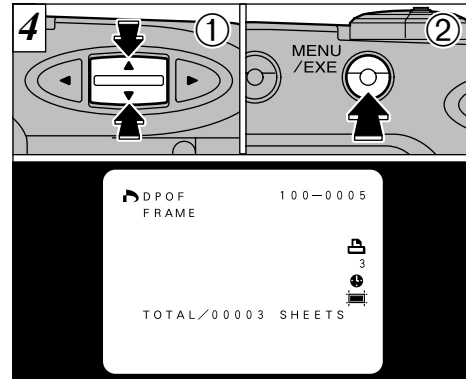
Using the Zoom screen:
Use the “▲▼” button to zoom in and out.
(The zoom scale increases in increments of 0.2X up to 2.0X)


Using the Shift screen:
Use the “▲▼”, “▶” and “◀” buttons to shift the position of the area to be trimmed.

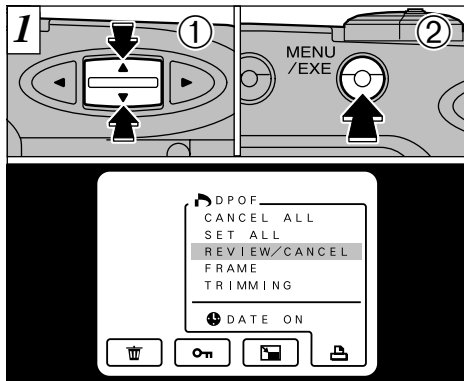


When you press the “MENU/EXE” button, the cropping settings are determined as shown in the image on the LCD monitor.

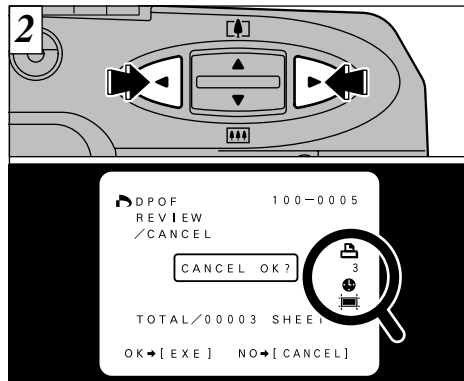
- ⚠ Trimmed images cannot be smaller than 640×480 pixels.
- ⚠ After trimming, the aspect ratio of the image is 4:3, which is the same as that of the recorded image.



- ① Use the “▲▼” button to specify the number of prints.
- ② Press the “MENU/EXE” button to confirm the settings and return to the menu screen. The “” icon is displayed for the frame for which trimming has been confirmed.

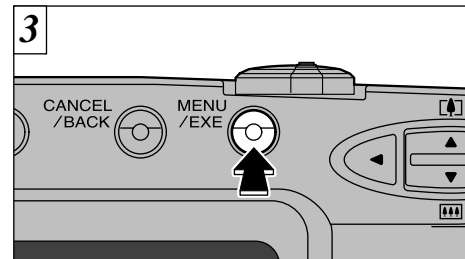


- ① Use the “▲▼” button to select “REVIEW/CANCEL”.
- ② Press the “MENU/EXE” button.

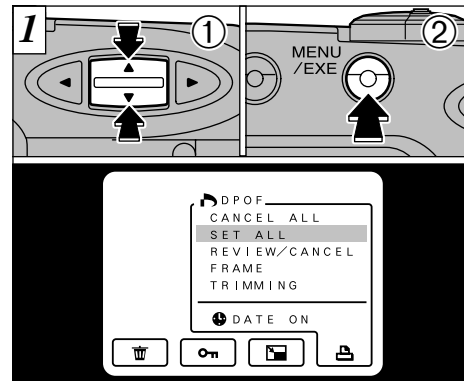


You can confirm the settings for only those frames with a specified number of prints by pressing “◀” or “▶” button. The settings for each frame are displayed on the right of the screen.

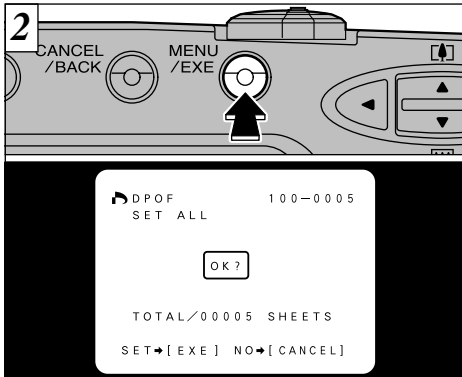
- ⚠ Multi-frame playback is an easy way to select images (→P.31).
- ⚠ If all the print specifications are cancelled, “TOTAL” shows “00000” and the background screen is black.



To cancel a print specification, display the image you want to cancel and press the “MENU/EXE” button.



- ① Use the “▲▼” button to select “SET ALL” or “CANCEL ALL”.
- ② Press the “MENU/EXE” button.



A confirmation screen appears. To continue, press the "MENU/EXE" button.

- ! "SET ALL" specifies 1 print for all the images.
- ! The "SET FRAME" specifications and cropping settings are cancelled.
- ! Prints can be specified for up to 999 frames on the same SmartMedia. If you specify more than 999 frames, the "DPOF FILE ERROR" warning appears.



The total number of prints is displayed on the LCD monitor and then the menu screen reappears.

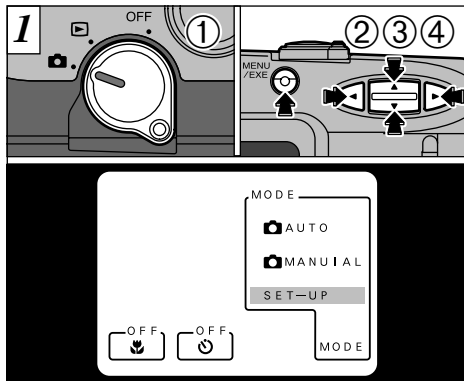
- ! "TOTAL" shows the total number of prints specified.
- ! If you cancel all the frames, the "TOTAL" display reverts to "00000".

▶ The table below explains the camera setting.

Settings	Display	Factory default	Explanation
BACK	EXE	—	Exits set-up.
QUALITY	FINE/NORMAL/BASIC	NORMAL	Sets the compression ratio for recording. Can be set as described on P.65. F: FINE N: NORMAL B: BASIC
FILE SIZE	1280×960/640×480	1280×960	Sets the number of pixels recorded (image file size). Can be set as described on P.65.
FRAME NO.	RENEW/CONT	RENEW	Specifies whether the Frame NO. Memory function is used (⇒P.66).
BEEP	HIGH/LOW/OFF	HIGH	Selects the buzzer volume for camera operation. When this is set to OFF, the camera buzzer emits no sound.
DATE/TIME	EXE	—	Sets the date and time (⇒P.17).

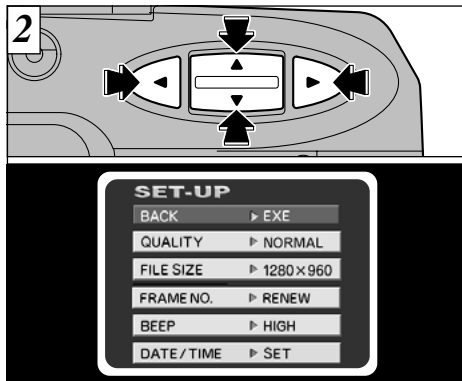
*See the following page for information on using the settings.

SETUP MODE



Use the following procedure to display the SET-UP screen.

- ① Set the Mode switch to “”.
- ② When you press the “MENU/EXE” button, the menu screen appears.
- ③ Use the “” and “” buttons to select MODE and then use the “” button to select “SET-UP”.
- ④ Press the “MENU/EXE” button to switch to the SET-UP screen.



Use the “” button to select the desired item and then use the “” and “” buttons to change and confirm the setting (excluding the date and time settings).

To exit the SET-UP menu, select BACK and press the “MENU/EXE” button. The photography screen reappears.

SETTING THE IMAGE QUALITY/FILE SIZE

Setting the Image Quality

You can select any of 3 image quality (recorded image compression ratio) settings as required. The number of shots available varies depending on the image quality. See P.24, 82 for information on the number of shots available for each type of SmartMedia.

Select [FINE] for better image quality, and [BASIC] to fit more shots on the SmartMedia.

In most cases, the [NORMAL] setting provides suitable image quality.

◆ Image file Compression Ratio

Quality	Compression Ratio
FINE (F)	Approx. 1/4
NORMAL (N)	Approx. 1/8
BASIC (B)	Approx. 1/16

Setting the File Size

You can select 2 different file size (pixel count) settings as required. The number of shots available varies depending on the file size. See P.24, 82 for information on the standard number of shots available for each type of SmartMedia.

- 1280: 1,280 × 960 pixels
- 640: 640 × 480 pixels

FRAME NO. MEMORY

	<RENEW>	<CONT>
A	0001 ⋮ 0005	0001 ⋮ 0005
↓		
B	0001 ⋮ 0005	0006 ⋮ 0010

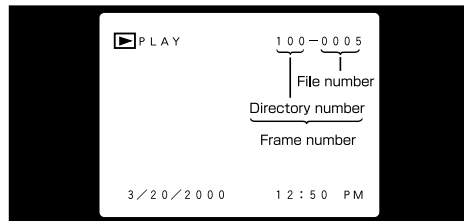
* Formatted SmartMedia used for both A and B.

RENEW : Pictures are stored on each SmartMedia beginning with a file number "0001".

CONT : Pictures are stored beginning from the highest file number stored on the last SmartMedia used.

Setting this function to "CONT" makes file management easier as it ensures that file names are not duplicated when images are downloaded to a PC.

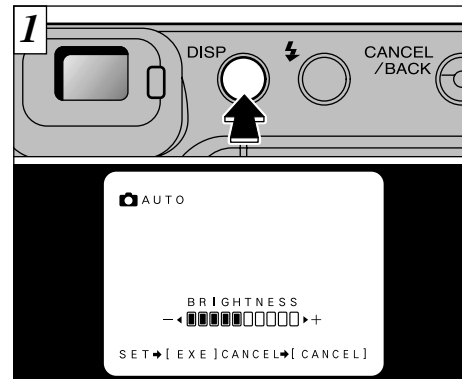
⚠ If the SmartMedia already contains image files with file numbers higher than the highest file number on the last SmartMedia, images are stored beginning from the highest file number on the current SmartMedia.



You can check the file number by viewing the image. The last 4 digits of the 7-digit number displayed in the top-right corner of the screen show the file number. The first 3 digits show the directory number.

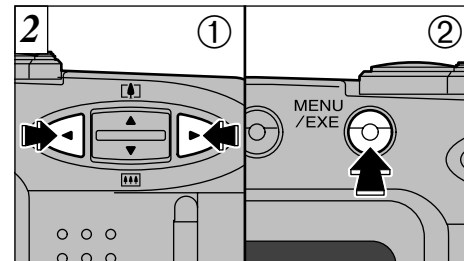
- ⚠ When replacing the SmartMedia, always switch the camera off before you open the slot cover. If you open the slot cover while the camera is still switched on, the FRAME NO. (frame number memory) function will not operate.
- ⚠ File numbers run from 0001 to 9999. Once 9999 is exceeded, the directory number goes up by 1. The maximum number is 999-9999.
- ⚠ If you take a picture with FRAME NO. (frame number memory) set to RENEW, the stored "Last file No." setting is reset.
- ⚠ The frame number display for images shot on other cameras may differ.

ADJUSTING THE LCD MONITOR BRIGHTNESS



If you hold down the "DISP" button for about 2 seconds, the brightness adjustment screen appears.

- ⚠ When the LCD monitor is switched off and no text is displayed in Photography mode (→P.27, 41), the setting cannot be changed.

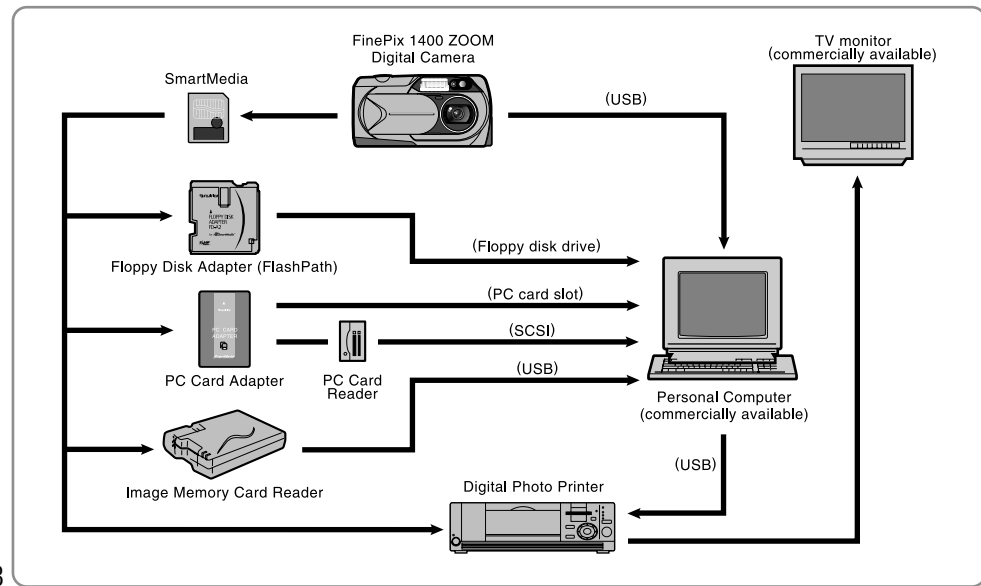


- ① Use the "◀" and "▶" buttons to adjust the brightness.
- ② Press the "MENU/EXE" button.

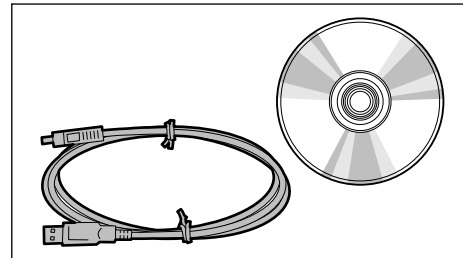
- ⚠ To exit this procedure without changing the settings, press the "CANCEL/BACK" button.

System Expansion Options

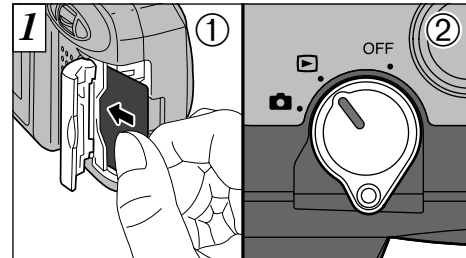
► By using the FinePix1400 ZOOM together with other optional Fujifilm products, your system can be expanded to fill a wide range of uses.



Using the USB Interface Set



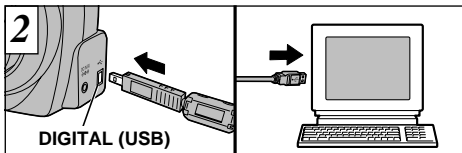
- Connect the camera to your PC using the enclosed cable and transfer images from the camera to your PC.
- The software runs on Windows 98 (including the second edition) and Mac OS 8.5.1 to Mac OS 9.0. Note that your PC must be equipped with a USB port. (The software is not guaranteed to run on home-made PCs.)



- ① Load the SmartMedia.
- ② Set the Mode switch to "P".

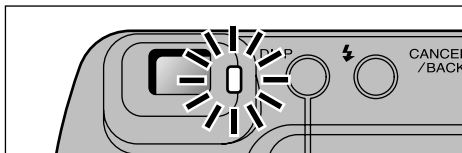
- ⚠ Use of the AC Power Adapter AC-5V (sold separately) is recommended (►P.13). Loss of power during data transfer will prevent successful data transfer.
- ⚠ The Auto Power Off function does not operate when the camera is connected to a PC.

Using the USB Interface Set



Plug the small pin on the special cable into the Digital (USB) socket on the camera, and plug the other end of the cable into the USB socket on your PC. When you switch the PC on, "USB" appears in the upper left corner of the LCD monitor.

- Use only the special cable provided.
- Refer to the User's Guide provided with the USB Interface Set for information on installing and using the software.
- You cannot write data to this camera or erase files on this camera from a PC.



When the viewfinder lamp is lit orange or flashing orange, this indicates that data access is in progress. (The PC is reading the data on the SmartMedia.) Never open the slot cover or disconnect the cable during data access as this could prevent data being transferred correctly or cause the camera to malfunction.

◆ Replacing the SmartMedia ◆

- On Windows**
Check that data access is not in progress and then replace the SmartMedia.
- On a Macintosh**
Drag the removable disk icon on the desktop to the Trash. When the "REMOVE OK" message appears on the LCD monitor, replace the SmartMedia.

- Depending on the hardware and software settings, your PC may be unable to recognize the SmartMedia after it has been replaced. If this occurs, switch the camera off and then on again.

Accessories Guide

The optional accessories (sold separately) can make taking pictures with the FinePix1400 ZOOM even easier. For information on how to attach and use the accessories, refer to the instructions provided with the accessory used.

● SmartMedia™

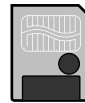
These are separately available SmartMedia cards.

Use the following SmartMedia:

● MG-4S : 4MB, 3.3V ● MG-8S : 8MB, 3.3V ● MG-16S : 16MB, 3.3V

● MG-32S : 32MB, 3.3V ● MG-64S : 64MB, 3.3V

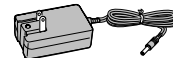
* Some 3.3V SmartMedia are labelled as "3V" or "ID" cards.



● AC Power Adapter AC-5V

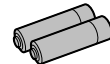
Use the AC-5V when taking pictures for a long period of time or when the FinePix1400 ZOOM is connected to a personal computer.

* The Shapes of the AC power adapter, the plug and socket outlet depend on the country.



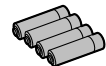
● Fujifilm Rechargeable Battery 2HR-3UF

The 2HR-3UF includes 2 pieces of high-capacity AA-size Nickel Metal Hydride batteries.



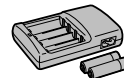
● Fujifilm Rechargeable Battery 4KR-3UF

The 4KR-3UF includes 4 pieces of high-capacity AA-size Ni-Cd batteries.



● Fujifilm Battery charger with Battery BK-NH (AC 220V only)

The BK-NH includes the quick battery charger BCH-NH and 2 Ni-MH batteries. The BCH-NH can charge 2 Ni-MH batteries in approximately 110 minutes. Up to 4 Ni-MH or Ni-Cd batteries can be charged simultaneously.



● Floppy Disk Adapter (FlashPath)

This adapter is the same size and shape as a 3.5-inch floppy disk. You can copy the images on a SmartMedia to your PC simply by loading the SmartMedia into the floppy disk adapter and then inserting the adapter into your floppy disk drive.

	Compatible OS	Compatible SmartMedia
FD-A1/A1S/A1N	Windows95/98, NT 4.0 Macintosh	5V/3.3V, 2MB to 32MB
FD-A2		5V/3.3V, 2MB to 64MB



● PC Card Adapter

The PC Card Adapter allows the SmartMedia to be used as a PC Card Standard ATA-compliant (PCMCIA 2.1) PC card (Type II).

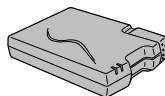
- PC-AD2 : Compatible with SmartMedia of 5V/3.3V, 2MB to 8MB.
- PC-AD3 : Compatible with SmartMedia of 5V/3.3V, 2MB to 64MB.



● SM-R1/R2 Image Memory Card Reader

The SM-R1/R2 allows images to very easily be read and written from an image memory card (SmartMedia) to a personal computer. Its USB interface provides high-speed data transmission.

- Windows98 or Power Macintosh with USB interface.



● SC-FX4

This case can be used when carrying the camera to protect it from dust, dirt and mild impacts.

Notes on Using Your Camera Correctly

▶ Be sure to read this information in conjunction with before you use this product “Safety Notes” (→P.85) to ensure that you use your camera correctly.

■ Places to Avoid

Do not store or use the camera in the following types of locations:

- Very humid, dirty or dusty places
- In direct sunlight or in places subject to extreme temperature rises, such as in a closed car in summer. Extremely cold places
- Places subject to strong vibrations
- Places affected by smoke or steam
- Places subject to strong magnetic fields (such as places near motors, transformers or magnets)
- For long periods in contact with chemicals such as pesticides or next to rubber or vinyl products

■ Do not expose the camera to sand.

The FinePix1400 ZOOM is particularly and adversely affected by sand. In sandy locations such as beaches or deserts, or in locations where there is wind borne sand, ensure that the camera is not exposed to sand. This can cause faults that may be irreparable.

■ Notes on Condensation

If the camera is carried suddenly from a cold location into a warm place, water droplets (condensation) may form on the inside of the camera or on the lens. When the viewfinder lamp is lit orange or flashing orange, this indicates that data access is in progress. Condensation

may also form on the SmartMedia card. In this event, remove the SmartMedia and wait a short time before using it again.

■ When the Camera is Unused for Long Periods

If you do not intend to use the camera for a long period, of time remove the batteries and the SmartMedia card before storing the camera.

■ Cleaning Your Camera

- Use a blower brush to remove dust from the lens and LCD surface and then wipe lightly with a soft, dry cloth. If any soiling remains, apply a small amount of lens cleaning liquid to a piece of Fujifilm lens cleaning paper and wipe gently.
- Do not scratch hard objects against the lens, LCD monitor screen or viewfinder as these surfaces are easily damaged.
- Clean the body of the camera with a soft dry cloth. Do not use volatile substances such as thinners, benzene or insecticide, as these may react with camera body and cause deformation or remove the coating.

■ When travelling overseas

Do not place your camera in the check-in baggage. Baggage handling at airports may subject baggage to violent shocks, and the camera may be damaged internally even when no external damage is visible.

Notes on the Power Supply

Applicable Batteries

- AA-size alkaline, Ni-MH (nickel metal hydride), or Ni-Cd batteries can be used with this camera. Do not use AA-size manganese or lithium batteries in your FinePix1400 ZOOM because the heat generated by the batteries could damage the camera or cause malfunctions.
- Because different brands of alkaline batteries have different capacities, the life of some batteries (the length of time for which they can be used) may be considerably shorter than that of the alkaline batteries supplied with this camera.

Notes on the Batteries

Incorrect use of the batteries could cause them to leak, become hot, ignite or burst. Always observe the precautions given below.

- Do not heat the batteries or throw them into a fire.
- Do not carry or store a battery with metal objects such as necklaces or hairpins that could come into contact with the metal positive ⊕ and negative ⊖ poles of the battery.
- Do not expose the batteries to fresh or sea water, and take particular care to keep the terminals dry.
- Do not attempt to deform, disassemble or modify the batteries.
- Do not attempt to peel off or cut the battery casing.
- Do not drop, strike or otherwise subject the batteries to strong impacts.

- Do not use batteries that are leaking, deformed, discolored or exhibit any other obvious abnormality.
- Do not store batteries in very warm or moist locations.
- Keep the batteries out of the reach of babies and small children.
- When loading the batteries in the camera, ensure that the battery polarity (⊕ and ⊖) is as indicated on the camera.
- Do not use new batteries together with used batteries. In the case of rechargeable batteries, do not use charged and discharged batteries together. Do not use batteries of different types or brands together.
- If you do not intend to use the camera for a long period of time, remove the batteries from the camera. (Note that if the camera is left with the batteries removed, the time and date settings are cleared.)
- The batteries may feel warm immediately after being used. Before removing the batteries, switch the camera off and wait until the batteries cool down.
- When replacing the batteries, always fit 4 new batteries. Here, 'new batteries' refers to either recently purchased unused alkaline batteries, or Ni-Cd or Ni-MH (nickel metal hydride) batteries that have recently been fully recharged together.
- Battery performance deteriorates at low temperatures (+10°C or below) and the time for which they can be used shortens. This is particularly true of alkaline batteries. In cold conditions, put the batteries in your pocket or a similar place to warm them before loading them into the camera. If you use a body warmer to warm the batteries, ensure that they are not in direct contact with the warmer.

- ⚠ If any liquid at all leaks from the batteries, wipe the battery compartment thoroughly and then load new batteries.
- ⚠ If any battery fluid comes into contact with your hands or clothing, flush the area thoroughly with water. Note that battery fluid can cause loss of eyesight if it gets in your eyes. If this occurs, do not rub your eyes. Flush the fluid out with clean water and contact your physician for treatment.

Disposing of Batteries

When disposing of batteries, do so in accordance with your local waste disposal regulations.

Notes on Small Rechargeable Batteries (Ni-MH or Ni-Cd batteries)

- Always use the special battery charger to charge AA-size Ni-MH or Ni-Cd batteries. Charge the batteries as described in the instructions provided with the battery charger.
- Do not use the battery charger to charge batteries other than those specified for use with the charger.
- Note that the batteries may feel warm immediately after being charged.
- Ni-MH and Ni-Cd batteries are not charged at shipment. Be sure to charge the batteries before using them.
- The camera mechanism is such that it draws a minute amount of current even when the camera is switched off. Take particular care not to leave Ni-MH or Ni-Cd batteries in the camera for a long period of time as they can become excessively discharged and no longer be usable even when charged.

- Ni-MH and Ni-Cd batteries self-discharge even when not used. Always charge Ni-MH and Ni-Cd batteries before using them. If the time for which a battery provides power shortens markedly when it has been correctly charged, this indicates that the battery has reached the end of its effective life and should be replaced.

Notes on Using the AC Power Adapter

Always use the AC-5V AC Power Adapter AC-5V (sold separately) with the FinePix1400 ZOOM Digital Camera.

The use of an AC power adapter other than the AC-5V could result in damage to your camera.

- Ensure that you do not touch the contact areas on the AC power adapter against any other metal object as this could cause a short circuit.
- Do not plug the AC power adapter into the DIGITAL socket as this could damage your camera.
- Do not plug in the AC power adapter while you are operating the camera using batteries. Switch the camera off first.
- Do not load the batteries while you are operating the camera using the AC power adapter. Switch the camera off first.
- If you disconnect the AC power adapter when there are no batteries in the camera, the date and time settings will be lost and must be reset.

■ SmartMedia

The SmartMedia card supplied with your FinePix1400 ZOOM camera is a new image recording medium developed especially for use in digital cameras. Each SmartMedia card contains a built-in semiconductor memory chip (NAND flash memory) which is used for storing digital image data.

Because the data is stored electronically, the stored image data can be erased from the card and new data recorded.

■ SmartMedia with IDs

The SmartMedia ID is a SmartMedia that has an individually assigned identification number. SmartMedia ID cards can be used with devices that use ID numbers for copyright protection or other purposes. This camera accepts SmartMedia ID cards in the same way as conventional SmartMedia cards.

■ Storing Data

In the situations listed below, recorded data may be erased (destroyed). Please note that Fuji Photo Film Co., Ltd. accepts no responsibility whatsoever for the loss (destruction) of recorded data.

*When the SmartMedia is used incorrectly by the owner or a third party

*When the SmartMedia is exposed to static electricity or electrical noise

*When the SmartMedia cover is opened or the

SmartMedia removed and the camera is then switched off during data recording, during data erasing (SmartMedia formatting) or during frame advance when images are being played back.

Back up important data onto another medium (MO disk, floppy disk, hard disk, etc.).

■ Notes on Handling SmartMedia

- When inserting the card into the camera, hold the SmartMedia straight as you push it in.
- Never remove the SmartMedia or switch the camera off during data recording, during data erasing (SmartMedia formatting) or during frame advance when images are being played back. These actions could result in damage to the SmartMedia.
- Use only the SmartMedia specified for use with the FinePix1400 ZOOM. The use of other SmartMedia could damage the camera.
- SmartMedia are precision electronic devices. Do not bend, drop, or subject SmartMedia to excessive shocks.
- Do not use or store SmartMedia in environments likely to be affected by strong static electricity or electrical noise.
- Do not use or store SmartMedia in very hot, humid or corrosive environments.
- Be careful not to touch the SmartMedia's contact area or allow the area to become soiled. Use a dry lint-free cloth to wipe away any soiling that does occur.

- To avoid damage caused by static electricity, always use the special static-free case provided during transportation or storage, or keep the SmartMedia in a storage case if available.
- Do not carry SmartMedia in locations such as a trouser pocket. This could subject the SmartMedia to excessive force when you sit down, therefore damaging the SmartMedia.
- The SmartMedia may feel warm when it is removed from the camera after extended periods of picture taking or image viewing. This is normal and does not indicate a fault.
- Inserting a SmartMedia that is charged with static electricity into your camera may result in a camera malfunction. If this occurs, switch the camera off and then on again.
- Affix the label onto the designated area of the card. Do not use third-party labels as this can lead to problems when the card is inserted or removed.
- When you attach the label, take care that it does not cover any of the write-protect area.

■ Notes on Using SmartMedia with a PC

- If you intend to take photos using a SmartMedia that has been used on a PC, format the SmartMedia on your camera.
- When you format a SmartMedia in the camera and then

shoot and record images, a directory (folder) is automatically created. Image data is then recorded in this directory.

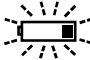
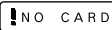

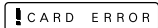
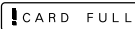

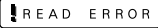

- Do not change or delete the directory (folder) names or file names on the SmartMedia from your PC as this will make it impossible to use the SmartMedia in your camera.
- Always use the camera to erase image data on a SmartMedia.
- To edit image data, copy the image data to the computer's hard disk and then edit the copied data.





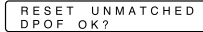


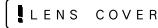
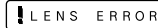
■ Specifications

Type	Image memory card for digital cameras (SmartMedia)
Operating voltage	3.3V
Operating conditions	Temperature: 0°C to +40°C (+32°F to +104°F) Humidity: 80% or less (condensation free)
Dimensions	37 X 45 X 0.76mm (1.45 X 1.77 X 0.03in.) (W X H X D)

Warning Displays

► The table below lists the warnings that are displayed on the LCD monitor.

Explanation	Warning Displayed	Remedy
	The camera battery is low on charge.	Replace or recharge the battery.
	No SmartMedia is loaded, or it is loaded incorrectly.	Load a SmartMedia or reload the SmartMedia the correct way round.
	The SmartMedia is not formatted.	Format the SmartMedia.
	<ul style="list-style-type: none"> • The SmartMedia contact area are soiled. • The SmartMedia is damaged. • The SmartMedia format is incorrect. 	Wipe the contact area on the SmartMedia with a soft dry cloth. It may be necessary to format the SmartMedia. If the error message is still displayed, replace the SmartMedia.
	The SmartMedia is fully recorded.	Erase some images or use a SmartMedia that has ample free space.
	The SmartMedia is write-protected.	Use a SmartMedia that is not write-protected.
	<ul style="list-style-type: none"> • An attempt was made to playback incorrectly recorded data. • An attempt was made to playback a frame not recorded on camera. 	Images cannot be played back.
	The image you tried to erase has a DPOF print setting.	When you erase the image, the DPOF settings for that image are deleted at the same time.

Explanation	Warning Displayed	Remedy
	The frame number has reached 999-9999.	Switch the Frame NO. Memory function off and use a formatted SmartMedia to take the picture.
	There is a strong likelihood of camera shake because the shutter speed is slow.	Set the flash to Forced Flash mode or use a tripod.
	A protected frame was erased.	Remove the protection.
	The AF (auto focus) cannot work effectively.	<ul style="list-style-type: none"> • If the shot is too dark, move at least 1.5 meters away from the subject and try again. • Use AF lock to take the picture.
	The DPOF file contains an error. Alternatively, the DPOF file was set up on a different device.	Press the MENU/EXE button to create a new DPOF file and specify all the DPOF settings again.
	Prints were specified for more than 999 frames in the DPOF frame settings.	The maximum number of frames for which prints can be specified on the same SmartMedia is 999.
	The specified action cannot be performed.	The functions cannot be used because the image file is in an unsupported format.
	The lens cover is not open.	Open the lens cover.
	Camera malfunction or fault.	Try switching the camera on and off a few times.

Troubleshooting

► Before you decide the camera is faulty, check the following once more.

Problem	Cause	Remedy
No power	<ul style="list-style-type: none"> The battery is exhausted. The AC power adapter plug has come out of the power outlet. 	<ul style="list-style-type: none"> Load a new battery. Plug the adapter back in.
Power cuts out during operation.	<ul style="list-style-type: none"> The battery is exhausted. 	<ul style="list-style-type: none"> Load new batteries.
Battery runs out quickly.	<ul style="list-style-type: none"> You are using the camera in extremely cold conditions. The terminals are soiled. The batteries are flat. 	<ul style="list-style-type: none"> Put the battery in your pocket or another warm place to heat it and then load it into the camera just before you take a picture. Wipe the battery terminals with a clean, dry cloth. Load a new battery.
No photograph is taken when the shutter button is pressed.	<ul style="list-style-type: none"> The lens cover is not open. No SmartMedia is loaded. The SmartMedia is fully recorded. The SmartMedia is write-protected. The SmartMedia is not formatted. The SmartMedia contact area is soiled. The SmartMedia is damaged. The Auto Power Off function has switched the camera off. The battery is exhausted. 	<ul style="list-style-type: none"> Open the lens cover. Load a SmartMedia. Erase some images or use a SmartMedia that has ample free space. Remove the write-protection. Format the SmartMedia. Wipe the SmartMedia contact area with a clean dry cloth. Load a new SmartMedia. Switch the camera on. Load new batteries.
I can't use the flash to take pictures.	<ul style="list-style-type: none"> The Mode Switch has been moved to another setting. The flash is set to Suppressed Flash mode. 	<ul style="list-style-type: none"> Set the Mode Switch to the correct setting. Set the flash mode to Auto, Red-eye Reduction, Forced Flash or Night Scene.

Problem	Cause	Remedy
I can't use the flash to take pictures.	<ul style="list-style-type: none"> The shutter button was pressed when the viewfinder indicator was blinking orange. 	<ul style="list-style-type: none"> Wait until the flash has finished charging before pressing the shutter button.
The flash will not charge.	<ul style="list-style-type: none"> No compatible SmartMedia is loaded. The camera is set to Suppressed Flash mode. The battery is exhausted. 	<ul style="list-style-type: none"> Load a new SmartMedia, erase a frame, or remove the write-protection. Set the flash mode to Auto, Red-eye Reduction, Forced Flash or Night Scene. Load new batteries.
The playback image is too dark even though I used the flash.	<ul style="list-style-type: none"> The subject is too far away. Your finger is covering the flash. 	<ul style="list-style-type: none"> Move closer to the subject. Hold the camera correctly.
The image is blurred.	<ul style="list-style-type: none"> The lens is soiled. Macro photography was used to photograph scenery. 	<ul style="list-style-type: none"> Clean the lens. Cancel Macro photography.
I cannot format the SmartMedia.	<ul style="list-style-type: none"> The SmartMedia is write-protected. 	<ul style="list-style-type: none"> Remove the write-protection. (Peel off the write-protect sticker.)
I cannot erase all the frames.	<ul style="list-style-type: none"> The frame is protected. 	<ul style="list-style-type: none"> Remove the frame protection.
Nothing happens when I use the camera buttons and switches.	<ul style="list-style-type: none"> Camera malfunction. The Mode Switch has been moved to another setting. The battery is exhausted. 	<ul style="list-style-type: none"> Remove the battery, re-insert them and try again. Move the Mode Switch to the correct setting. Load new batteries.
No image appears when I press the, "DISP" button.	<ul style="list-style-type: none"> The Mode Switch is set incorrectly. 	<ul style="list-style-type: none"> Move the Mode Switch to the correct setting.

Specifications

System

- Model
Digital camera
- Pickup Elements
1/2.7-inch square pixel CCD (1.31 million pixels)
- Resolution
1,280 × 960 pixels/640 × 480 pixels
- File format
DCF-compliant (Exif Ver.2.1 JPEG-compliant), DPOF-compatible
- Viewfinder
Real Galileo type ; Frame coverage : 80%
- Lens
Fujinon optical 3×ZOOM lens F3.5/F8.7
- Storage media
SmartMedia (3.3V)
- Number of frames recorded

- Focus distance
f = 6 -18mm (equivalent to 38 -114mm on a 35mm camera)
- Exposure control
64 zones TTL metering, Program AE (exposure compensation available in Manual mode)
- Sensitivity
Equivalent to ISO 125
- White balance
Auto-selected (7 modes selectable in Manual mode)
- Focal range
Normal : Approx. 0.8m/31.5in. to infinity
Macro : Approx. 10cm/3.9in to 80cm/31.5in.
- Shutter speeds
Variable-speed, 1/2 to 1/750 sec. (combined with mechanical shutter)
- Flash (Auto flash using flash control sensor)
Effective range : Wide Approx. 0.2 - 3.5m (7.9in -11.5ft)
: Tele Approx. 0.8 - 3.5m (2.6ft -11.5ft)
Flash modes : Auto, Red-Eye Reduction, Forced Flash, Suppressed Flash, Slow Synchro

Pixel	1280 X 960			640 X 480		
	FINE	NORMAL	BASIC	FINE	NORMAL	BASIC
Quality Mode						
Compression Ratio	Approx.1/4	Approx.1/8	Approx.1/16	Approx.1/4	Approx.1/8	Approx.1/16
Image Data Size	Approx.610KB	Approx.310KB	Approx.160KB	Approx.160KB	Approx.90KB	Approx.50KB
4MB (MG-4S)	6	12	23	23	44	69
8MB (MG-8S)	12	24	46	46	89	141
16MB (MG-16S)	25	49	89	89	163	246
32MB (MG-32S)	50	99	180	180	330	496
64MB (MG-64S)	101	198	361	361	663	995

82 This camera can handle up to 1,000 image frames. However, it is not recommended that record images more than 1,000 frames on a SmartMedia.

- LCD monitor
1.6-inch, 55,000-pixel D-TFD
- Self-Timer
10 sec. timer clock

Input/Output Terminals

- Digital
USB (1) for image data output with a personal computer
- DC Input
Socket for specified AC power adapter

Power Supply and Others

- Power supply
Use one of the following:
 - 4AA-size alkaline batteries
 - 4AA-size Ni-MH (nickel metal hydride) batteries (sold separately)
 - 4AA-size long-life (Minimum 1,000mAh) Ni-Cd (nickel-cadmium) batteries (sold separately)
 - AC-5V AC Power Adapter (sold separately)
- No. of available shots using battery (battery life)

Battery type	With LCD monitor ON	With LCD monitor OFF
Alkaline batteries	Approx.180 frames	Approx.450 frames
Ni-MH battery HR-3UF	Approx.180 frames*	Approx.450 frames*
Ni-Cd battery KR-3UF	Approx.120 frames*	Approx.350 frames*

* With fully charged battery

This indicates the number of available frames shot consecutively at room temperature with a flash use rate of 50%. Note that these figures may vary depending on the ambient temperature and the amount of charge in the battery.

- Conditions for use
Temperature : 0°C to +40°C (+32°F to +104°F) ; 80% humidity or less (no condensation)
- Camera dimensions (W/H/D)
125 × 65 × 39mm/4.9 × 2.6 × 1.5in. (not including accessories and attachments)
- Camera mass (weight)
Approx. 250g/8.8oz (not including accessories, batteries or SmartMedia)
- Weight for photography
Approx. 350g/12.3oz (including batteries and SmartMedia)
- Accessories
See P.7
- Optional Accessories
See P.71, 72

* These specifications are subject to change without notice.
* The LCD monitor on your digital camera is manufactured using advanced high-precision technology. Even so, small bright points and anomalous colors (particularly around text) may appear on the monitor. These are normal display characteristics and do not indicate a fault with the monitor. This phenomenon will not appear on the recorded image.

Explanation of Terms

AF/AE Lock: On this camera, pressing the shutter button down halfway locks the exposure settings (AF/AE lock). If you want to change the composition of your shot after you set the exposure, you can get excellent results by using AF/AE lock before you compose your shot and take the picture.

Auto Power Off Function: If the camera is not used in any way for two minutes or more, the Auto Power Off function switches the camera off. This is to prevent battery depletion and to avoid wasting power when the camera is connected to the AC power adapter. Auto Power Off does not operate when the Auto Power Off function is disabled or a USB connection is used.

DPOF: Digital Print Order Format
DPOF is a format used for recording information on a storage media (image memory card, etc.) that allows you to specify which of the frames shot using a digital camera are printed and how many prints are made of each image.

EV: A number that denotes exposure. The EV is determined by the brightness of the subject and sensitivity (speed) of the film or CCD. The number is larger for bright subjects and smaller for dark subjects. As the brightness of the subject changes, a digital camera maintains the amount of light hitting the CCD at a constant level by adjusting the aperture and shutter speed. When the amount of light striking the CCD doubles, the EV increases by 1. Likewise, when the light is halved, the EV decreases by 1.

JPEG: Joint Photographics Experts Group
A file format used for compressing and saving color images. The compression ratio can be selected, but the higher the compression ratio, the poorer the quality of the expanded image.

White Balance: Regardless of the type of lighting, the human eye adapts so that a white object still looks white. On the other hand, devices such as digital still cameras register a white subject as white by first adjusting their internal color balance to match the color of the ambient light around the subject. This adjustment process is referred to as matching the white balance. A function that automatically matches the white balance is called **an auto white balance function**.

Safety Notes

- To ensure that you use your FinePix1400 ZOOM camera correctly, read these Safety Notes and your Owner's Manual carefully beforehand.
- After reading these Safety Notes, store them in a safe place.

About the Icons

The icons shown below are used in this document to indicate the severity of the injury or damage that can result if the information indicated by the icon is ignored and the product is used incorrectly as a result.



WARNING This icon indicates that death or serious injury can result if the information is ignored.



CAUTION This icon indicates that personal injury or material damage can result if the information is ignored.

The icons shown below are used to indicate the nature of the information which is to be observed.



Triangular icons notify the user of information requiring attention ("Important").



Circular icons with a diagonal bar notify the user that the action indicated is prohibited ("Prohibited").



Filled circles with an exclamation mark notify the user of an action that must be performed ("Required").

! WARNING

When a fault arises, switch the camera off and then remove the batteries and disconnect the AC power adapter.

Continued use of the camera when it is emitting smoke, is emitting any unusual odor, or is in any other abnormal state can cause a fire or electric shock.

- Contact your Fuji dealer.



Unplug from power socket.

Do not allow water or foreign objects to enter the camera.

If water or a foreign object has entered the camera, switch the camera off and then remove the batteries and disconnect the AC power adapter.

Continued use of the camera can cause a fire or electric shock.

- Contact your Fuji dealer.



Do not place the camera on an unstable surface.

This can cause the camera to fall or tip over and cause injury.







Do not use the camera in the bathroom or shower.







This can cause a fire or electric shock.













Do not use in the bathroom or shower.

Safety Notes

 WARNING	
<p>Never attempt to modify or disassemble the camera. (Never open the casing.) Do not use the camera when it has been dropped or the casing is damaged. This can cause a fire or electric shock. ● Contact your Fuji dealer.</p>	 <small>Do not disassemble.</small>
<p>Never attempt to take pictures whilst in motion. Do not use the camera while you are walking or operating a moving car or other vehicle. This can result in you falling down or being involved in a traffic accident.</p>	
<p>Do not heat, modify or attempt to disassemble the batteries. Do not drop or subject the batteries to impacts. Do not attempt to recharge lithium or alkaline batteries. Do not store the batteries with metallic products. Any of these actions can cause the batteries to burst or leak and cause fire or injury as a result</p>	

 WARNING	
<p>Do not touch any metal parts of the camera during a thunderstorm. This can cause an electric shock due to induced current from the lightning discharge.</p>	
<p>Do not use the batteries except as specified. Load the batteries with the poles positioned as indicated by the ⊕ and ⊖ marks.</p>	
<p>Use only the batteries or AC power adapter specified for use with this camera. The use of other power sources can cause a fire.</p>	
<p>If the battery leaks and fluid gets into your eyes or comes into contact with your skin or clothing, this can cause injury or loss of eyesight. Immediately flush the affected area thoroughly with clean water and seek medical treatment.</p>	
<p>When discarding or storing batteries, cover the battery terminals with insulation tape. ● Contact with other metallic objects or batteries could cause the batteries to ignite or burst.</p>	

 CAUTION	
<p>Do not use this camera in locations severely affected by oil fumes, steam, humidity or dust. This can cause a fire or electric shock.</p>	
<p>Do not leave this camera in places subject to extremely high temperatures. Do not leave the camera in locations such as a sealed vehicle or in direct sunlight. This can cause a fire.</p>	
<p>Do not place heavy objects on the camera. This can cause the heavy object to tip over or fall and cause injury.</p>	
<p>Do not move the camera while the AC power adapter is still connected. This can damage the power cord or cables and cause a fire or electric shock.</p>	
<p>Do not cover or wrap the camera or the AC power adapter in a cloth or quilt. This can cause heat to build up and distort the casing or cause a fire.</p>	

 CAUTION	
<p>Remove the batteries and disconnect the AC power adapter when you are cleaning the camera or if you intend to leave the camera unused for a long period. Failure to do so can cause a fire or electric shock.</p>	
<p>Do not use the flash close to anyone's eyes. This can cause temporary damage to the person's eyesight.</p>	
<p>Request regular internal testing and cleaning for your camera. Build-ups of dust in your camera can cause a fire or electric shock. ● Contact your Fuji dealer to request internal cleaning every 2 years.</p>	



FUJI PHOTO FILM CO., LTD.

26-30, Nishiazabu 2-chome, Minato-ku, Tokyo 106-8620, Japan

Printed in Japan

Printed on recycled paper.

FGS-002102-FG