
Kodak EasyShare-One zoom digital camera



User's guide

www.kodak.com

For interactive tutorials, www.kodak.com/go/howto

For help with your camera, www.kodak.com/go/easyshare-onesupport



Eastman Kodak Company
Rochester, New York 14650

© Eastman Kodak Company, 2005

All screen images are simulated.

Contains Macromedia® Flash™ technology by Macromedia, Inc.

Copyright © 1995-2003 Macromedia, Inc. All rights reserved.

Wi-Fi® is a registered trademark of the Wi-Fi Alliance.

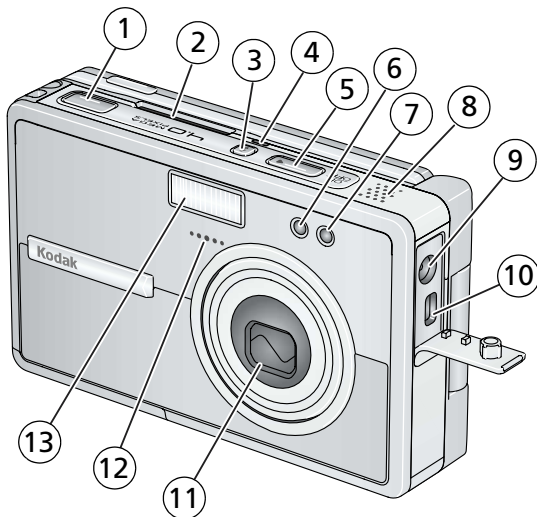
All other trademarks are the trademarks of their respective owners.




Eastman Kodak Company is an authorized licensee of the SD trademark.

Kodak, EasyShare, and EasyShare-One are trademarks of
Eastman Kodak Company.

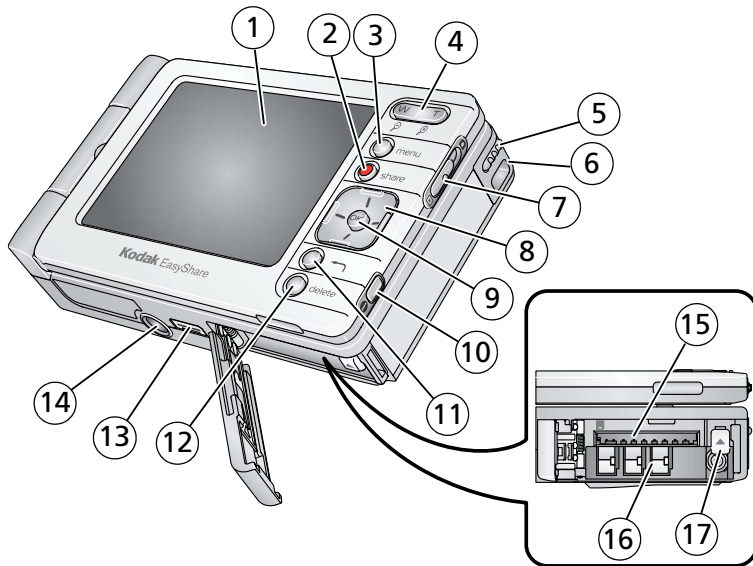
P/N 4J1926_en

Front/top/side view



- | | |
|--|--|
| 1 Shutter button | 8 Speaker |
| 2 Slot for Kodak Wi-Fi [®] card
(may be sold separately) | 9 DC-In (5V)  , for optional AC
adapter |
| 3 Flash button  | 10 USB, A/V Out  |
| 4 Wireless network status light | 11 Lens/Lens cover |
| 5 On/Off button | 12 Microphone |
| 6 Self-Timer/Video light | 13 Flash unit |
| 7 Light sensor | |

Back/bottom/side view (open)










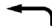
- 1 Touchscreen display (LCD)
- 2 Share button
- 3 Menu button
- 4 Zoom (Wide Angle/Telephoto)/Magnifier
- 5 Stylus
- 6 Wrist strap mount
- 7 Capture/View switch  
- 8 4-way controller    
- 9 OK button (press)
- 10 Info (information) button 
- 11 Back button 
- 12 Delete button
- 13 Dock connector
- 14 Tripod socket
- 15 Slot for **optional** SD/MMC card
- 16 Battery slot
- 17 Battery release switch

Table of contents

1 Getting started	1
What is the EasyShare-One camera?	1
Attaching the wrist strap	2
Charging the battery	2
Loading the battery	3
Turning the camera on and off	4
Navigating in your camera	5
Setting up your camera	6
Storing pictures and videos on an optional SD/MMC card	11
2 Taking pictures and videos	12
Taking a picture	12
Taking a video	13
Viewing the picture or video just taken	13
Overview of capture icons	14
Using optical zoom	14
Using digital zoom	15
Using the flash	15
3 Viewing pictures and videos	17
Locating pictures and videos on your camera	17
Playing videos	18
Viewing picture and video information	19
Magnifying a picture	19
4 Organizing and editing on your camera	20
Working with albums	20
Tagging pictures and videos as favorites	22
Using the drawer to select multiple pictures and videos	23
Adding or modifying a caption	25

Cropping pictures.....	25
Copying pictures and videos.....	26
Deleting pictures, videos, and albums.....	26
5 Taking pictures and videos: more tips and tricks	27
Choosing a scene mode	27
Using burst	29
Changing exposure compensation	30
Using the self-timer	31
Taking overhead pictures and videos	32
Pre-assigning pictures to an album	33
Changing capture settings.....	33
Changing device settings.....	36
Changing preferences	38
6 Using your camera with a Wi-Fi wireless network	39
Why go wireless?.....	39
What are some of the wireless features of my camera?	40
Types of Wi-Fi wireless networks	41
Wireless networking and the Internet	43
Inserting and deploying a Kodak Wi-Fi® card	43
Connecting to a Wi-Fi wireless network	44
Glossary of common wireless terms	48
7 Synchronizing and transferring to a computer	51
Installing the software.....	52
Setting up your camera for sync and transfer	53
8 Sharing pictures and videos	57
Do it from your camera—just press Share!	57
More ways to share your pictures and videos	66
The outbox	69

9 Troubleshooting	73
Camera	73
Picture quality	75
USB connection to computer	76
Wireless network connection	77
Synchronization and transfer	79
Printing	80
Helpful links	81
Telephone customer support	82
10 Appendix	84
Camera specifications	84
Storage capacities	88
Dock compatibility	89
Power-saving features	90
Wireless channels	90
Important safety instructions	91
Battery life	93
Upgrading your software and firmware	94
Additional care and maintenance	94
Warranty	95
Regulatory compliance	97

1

Getting started

What is the EasyShare-One camera?



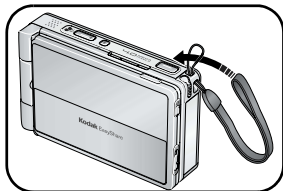
More than just a digital camera, the Kodak EasyShare-One zoom digital camera combines Kodak's signature ease-of-use with new technology into a single, innovative device: a device ideal for taking, viewing, organizing, sharing, and printing pictures. In addition, the wireless capabilities of the EasyShare-One camera let you share the world right from the palm of your hand.

Like all EasyShare digital cameras, the Kodak EasyShare-One zoom digital camera is compatible with the Kodak EasyShare system and software, so you know it's simple to use.

About using your EasyShare-One camera

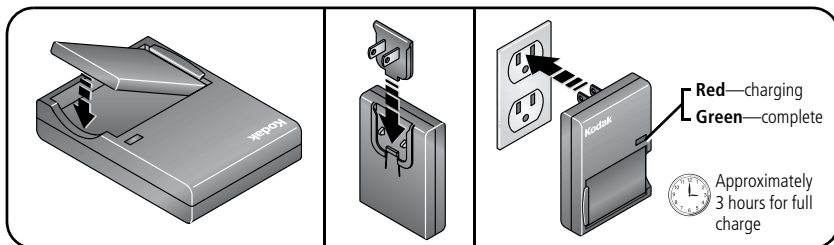
There may be several ways to accomplish the same task. You'll find that part of the fun of owning and using the EasyShare-One camera is in discovering different methods to operate it. As you use the EasyShare-One camera, you're sure to find intuitive shortcuts and techniques that work for you.

Attaching the wrist strap



Charging the battery

Charge the Li-Ion rechargeable battery before first use. Use the correct plug adapter for your country.



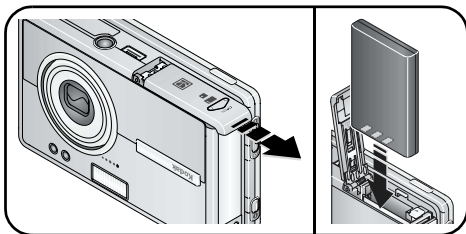
You can also charge the battery using a Kodak EasyShare printer dock or camera dock. See a dealer of Kodak products or visit www.kodak.com/go/easyshare-oneaccessories.

Loading the battery



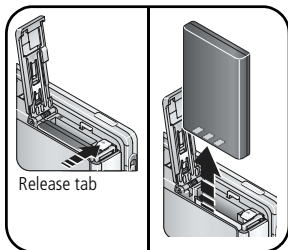
CAUTION:

Use only a Kodak Li-Ion rechargeable digital camera battery KLIC-5000, and orient it so that the battery contacts line-up with the contacts inside the battery slot.



Removing the battery

- 1 Turn off the camera, then open the battery/card door.
- 2 Press the release tab and pull the battery out.



For information on battery life see [page 93](#).

Turning the camera on and off

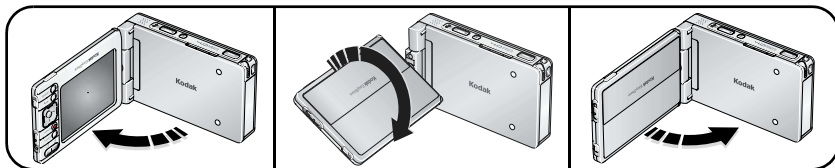
To turn on the camera:


Open, then rotate the touchscreen display.



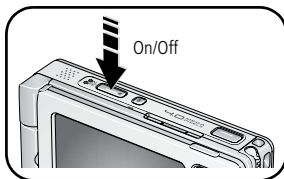
CAUTION:

Rotate the display in the direction shown. Do not force.



Your camera is ready for use when the On/Off button glows steady blue. If the Capture/View switch is in the Capture position , the lens extends.

- After 10 seconds of not using the camera, the screen dims to conserve power. Press the OK button to refresh the screen.



- If you do not use the camera for 8 minutes, it automatically turns off. Press the On/Off button to restore power to the camera.

To turn off the camera:

Open, rotate, then close the touchscreen display.

Navigating in your camera



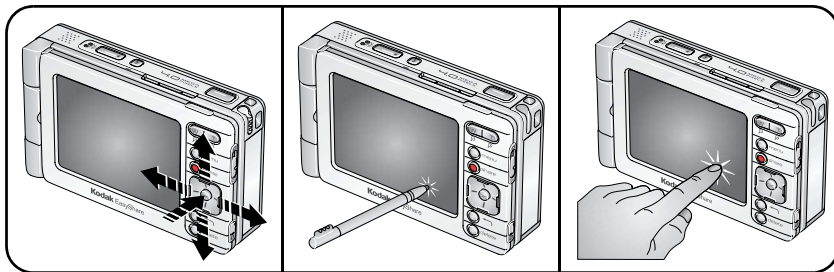
CAUTION:

Do not use a pen, pencil, or other sharp instrument with the touchscreen. Do not exert excessive pressure upon the touchscreen. Doing so may damage the touchscreen display.

You can move from screen to screen and make selections three ways:

- Press the 4-way controller ◀/▶ ▲/▼ to move between options, pictures, and videos. Press the OK button to select options, pictures, and videos, and to actuate buttons and icons.
- Touch the touchscreen with the stylus to select options, pictures, and videos, and to actuate buttons and icons.
- Touch the touchscreen with your finger to select options, pictures, and videos, and to actuate buttons and icons.

IMPORTANT: *Calibrate the touchscreen before using (see [page 7](#)).*



- Press the Back button, ⏪, to return to a higher menu or to the previous view.
- Press the Info button, ⓘ, located on the edge of the touchscreen display, for more information about selected icons or pictures and videos.

Using the touch keyboard

Some features of your camera may require you to enter words or phrases that help you identify images or set up account information on your camera. When presented with the touch keyboard screen, touch keys with the stylus to enter information.



- Touch abc to enter alphanumeric characters (default).
 - Touch int for international characters.
 - Touch sym for symbols.
- When finished, touch Done.

Setting up your camera


Selecting a language

The Language screen appears the first time you turn on the camera.



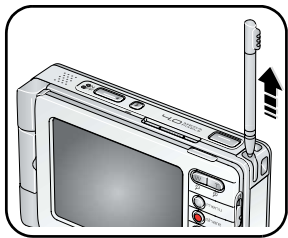
- Press the 4-way controller $\blacktriangle/\blacktriangledown$ to highlight a language, then press the OK button to select it.

To select a language anytime:

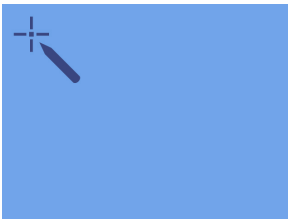
- 1 Press the Menu button, then select Setup.
- 2 Select Device , then select Language.
- 3 Press the 4-way controller $\blacktriangle/\blacktriangledown$ to highlight a language, then press the OK button to select it.

Calibrating the touchscreen

The Touchscreen Calibration screen appears after the Language screen the first time you turn on the camera.




1 Remove the stylus then touch Next to begin.



2 Touch each point with the stylus.

3 When finished, touch Next.

To calibrate the touchscreen anytime:

- 1 Press the Menu button, then select Setup.
- 2 Select Device , then select Touchscreen Calibration.
- 3 Touch Start to begin.
- 4 Touch each point with the stylus.
- 5 When finished, touch Done.


Setting the date and time

The Date & Time screen appears after the Touchscreen Calibration screen the first time you turn on the camera.



- 1 For each field, touch the up and down arrows to select a value.
- 2 When finished, touch Next.

To set the date and time anytime:

- 1 Press the Menu button, then select Setup.
- 2 Select Device , then select Date & Time.
- 3 For each field, touch the up and down arrows to select a value.
- 4 When finished, touch Done.

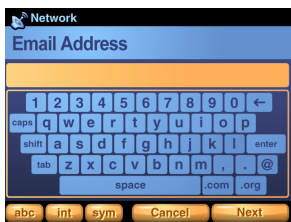
NOTE: Depending on your settings, Kodak EasyShare software may update the camera clock during synchronization (see [page 51](#)). Click the Help button in the Kodak EasyShare software for details.

Setting KODAK EASYSHARE Gallery account information

The Email Address and Gallery Password screens appear after the Date & Time screen the first time you turn on the camera.

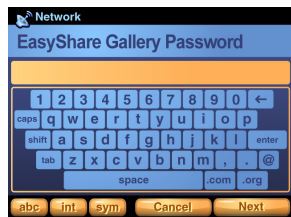
Visit www.kodakgallery.com to create your free KODAK EASYSHARE Gallery account, then enter the email address and password for your account.

NOTE: EASYSHARE Gallery may not be available in your area; however, you can use your camera with your regional online Kodak picture service.



1 Use the touch keyboard (see [page 6](#)) to type the email address used for your Gallery account.


2 When finished, touch Next.



3 Type your Gallery account password.

4 When finished, touch Next.

To set Gallery account information anytime:

- 1 Press the Menu button, then select Setup.
- 2 Select Preferences .
- 3 Touch Email Address.
- 4 Use the touch keyboard (see [page 6](#)) to type the email address used for your Gallery account. When finished, touch Done.
- 5 Touch The Gallery Password.
- 6 Type your Gallery account password. When finished, touch Done.

Storing pictures and videos on an optional SD/MMC card

Your camera has 256 MB of internal memory (approximately 185 MB available for image storage)*. You can purchase optional SD/MMC cards for removable, reusable storage for your pictures and videos (compatible up to 1 GB). The camera automatically stores pictures and videos on the card if one is inserted.

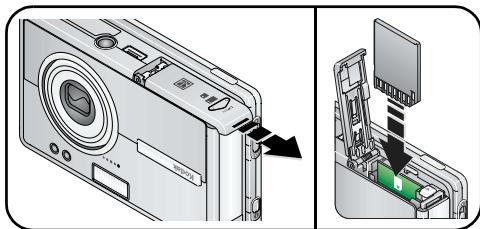
*1 MB equals 1 million bytes, 1 GB equals 1 billion bytes.

NOTE: We recommend Kodak SD or MMC cards. When using the card for the first time, format it in this camera before taking pictures or videos (see [Changing device settings, page 36](#)).



CAUTION:

Insert card as shown. Do not force. Do not insert a Kodak Wi-Fi® card in the slot shown. Doing so may damage the camera or card. After taking a picture, allow time for processing before removing a card to avoid damaging your pictures, card, or camera.



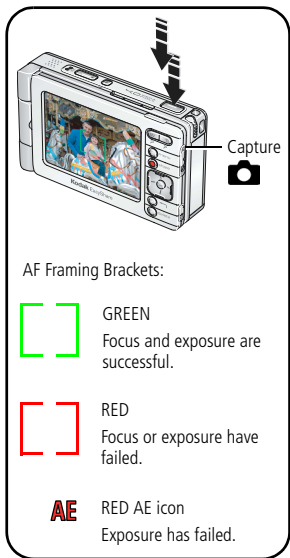
To remove the card:


- 1 Turn off the camera.
- 2 Push the card in, then release it.
- 3 When the card is ejected, pull it out.

See [page 88](#) for storage capacities. Purchase SD/MMC cards at a dealer of Kodak products or www.kodak.com/go/easysshare-oneaccessories.

2 Taking pictures and videos

Taking a picture



- 1 Turn on the camera (see [page 4](#)).
- 2 Slide the Capture/View switch to Capture .
- 3 Press the Menu button, then select Auto (default).
- 4 Frame your subject in the screen.
- 5 Press and hold the Shutter button **halfway** to set the Auto Focus (AF).

When the AF framing brackets turn green, focus is successful in the region indicated.

If the AF framing brackets turn red, focus failed. Release the Shutter button then try again.

If a red AE (Auto Exposure) icon appears, exposure failed. Release the Shutter button then try again.

- 6 Press the Shutter button **the rest of the way down** to take the picture.


NOTE: The camera attempts to focus on foreground subjects, even if the subjects are not centered in the scene.

The AF framing brackets are disabled for videos and some scene modes (see [page 27](#)).

- Press the OK button to turn the capture and toolbar icons off. Press again to turn them on.

Taking a video



- 1 Turn on the camera (see [page 4](#)).
- 2 Slide the Capture/View switch to Capture .
- 3 Press the Menu button, then select Video.
- 4 Frame your subject in the screen.
- 5 Press the Shutter button completely down and release. To stop recording, press and release the Shutter button again.

- Alternatively, you can press the Shutter button completely down and hold it for more than 2 seconds to begin recording. To stop recording, release the Shutter button.

Viewing the picture or video just taken

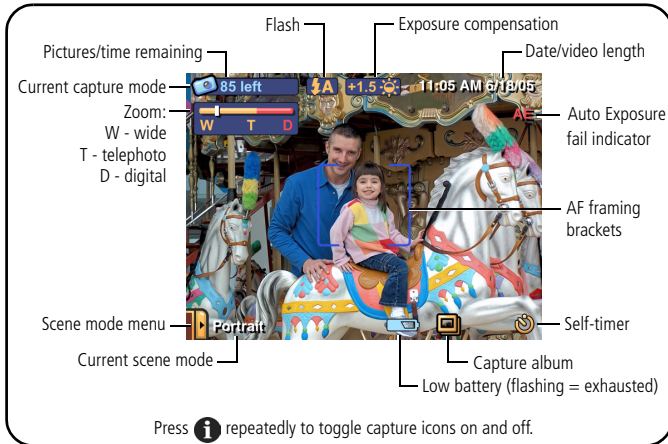
After you take a picture or video, a brief view, or Quickview, of the picture is displayed on the screen for several seconds. During Quickview:



* See [Sharing pictures and videos, page 57](#).

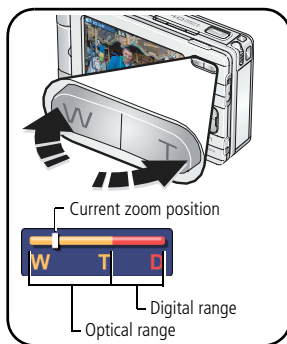
Overview of capture icons


Icons that appear on the screen indicate active camera and picture settings.



Using optical zoom

Use optical zoom to get up to 3X closer to your subject.




- 1 In Capture , frame your subject in the screen.
- 2 Press the Zoom Telephoto (T) button to zoom in. Press Wide Angle (W) to zoom out.
The zoom indicator shows zoom status.
- 3 Take the picture or video.

Using digital zoom

Use digital zoom to get additional 3.3X magnification beyond optical zoom. Combined zoom settings are from 3.3X to 10.0X in 0.3X increments.

NOTE: Digital zoom is disabled for videos.

You may notice decreased image quality when using digital zoom. The blue slider on the zoom indicator pauses, then turns red when the picture quality reaches the limit for an acceptable 4 x 6 in. (10 x 15 cm) print.

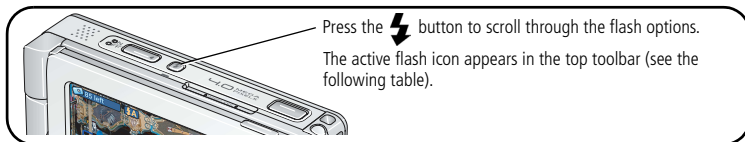
- 1 In Capture , frame your subject in the screen.
- 2 Press the Zoom Telephoto (T) button to the optical zoom limit. Release the button, then press it again.

The zoom indicator shows zoom status.

- 3 Take the picture.

Using the flash

Use the flash when you take pictures at night, indoors, or outdoors in heavy shadows.







Effective flash range:

Wide Angle—2–10.5 ft (0.6–3.2 m)

Telephoto—2–7.5 ft (0.6–2.3 m)

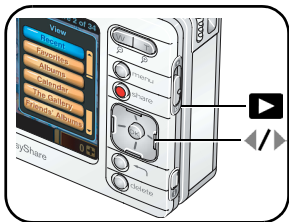
NOTE: Flash settings are preset for each scene mode (see [page 27](#)). Flash is disabled for videos and burst.


Flash setting	Flash fires	
 No flash	Never.	
 Auto	When the lighting conditions require it.	
 Red-eye	If Red-eye Pre-flash is turned off:	If Red-eye Pre-flash is turned on:
	<ul style="list-style-type: none"> ■ The flash fires once. ■ The camera automatically corrects red-eye in the picture. 	<ul style="list-style-type: none"> ■ The flash fires once so the subject's eyes become accustomed to the flash, then fires again when the picture is taken. ■ The camera automatically corrects red-eye in the picture.
	To turn Red-eye flash on or off, see Changing capture settings, page 33 .	
 Fill	Every time you take a picture, regardless of the lighting conditions. Use when the subject is in shadow or is "backlit" (when light is behind the subject). In low light, hold the camera steady or use a tripod.	

3

Viewing pictures and videos

Locating pictures and videos on your camera



- 1 Turn on the camera (see [page 4](#)).
- 2 Slide the Capture/View switch to View .

3 Press the Menu button, then select a view option:

Recent—all pictures and videos, from newest to oldest.

Favorites—pictures and videos tagged as favorites (see [page 22](#)).

Albums—pictures and videos arranged by albums (see [page 20](#)).

Calendar—pictures and videos arranged by the month they were taken.

The Gallery—pictures from your albums on KODAK EASYSHARE Gallery or your regional online Kodak picture service (see [page 63](#)).

Friends' Albums—pictures from your friends' albums on KODAK EASYSHARE Gallery (see [page 63](#)).

Outbox—pictures tagged for print or for email (see [page 69](#)).

Storage (not shown)—pictures and videos stored in internal memory or on an installed memory card.


Setup (not shown)—change camera settings.

IMPORTANT: *Pictures and videos viewed by Calendar are arranged according to your camera's date and time (see [page 8](#)). Check the date and time for accuracy after changing the battery.*








- 4 Press $\blacktriangle/\blacktriangledown$ $\blacktriangleleft/\blacktriangleright$ to locate and select a thumbnail of the picture, video, or album you want to view (the current selection is highlighted with a yellow border).
 - To view the selection full-screen, press the OK button or touch the selection.
 - Press the Back button, \blackleftarrow , to return to the previous view.
- 5 Press $\blacktriangleleft/\blacktriangleright$, or touch the left- or right-hand portion of the image, to scroll backward or forward through pictures and videos, and albums. (For fast scrolling, press and hold $\blacktriangleleft/\blacktriangleright$.)







Playing videos

- 1 Slide the Capture/View switch to View \blacktriangleright .
- 2 Select a video (the current selection is highlighted with a yellow border, and resembles a film clip, ).
 - To view the selection full-screen, press the OK button or touch the selection. Press the Back button, \blackleftarrow , to return to the previous view.
- 3 Press the OK button to play the video.
 - To adjust the volume, press $\blacktriangle/\blacktriangledown$.
 - To pause the video, press the OK button during playback.

Viewing picture and video information

- 1 In View , select a picture or video.
- 2 Press the Info button, , located on the lower outside edge of the touchscreen display, to view and manage information about the current selection.
 - Touch  to view the picture or video caption. To add or change a caption, see [page 25](#).
 - Touch  to view albums the picture or video is assigned to. See also [Working with albums, page 20](#).
 - Touch  to view the settings used to take the picture or video.

Magnifying a picture

- 1 In View , select a picture.
- 2 Press the Zoom Telephoto (T) button repeatedly to increase the magnification up to 8X or press Wide (W) to decrease it.
 - To see different parts of the picture, press    .
 - To redisplay the picture at the 1X (original) size, press the Back button, .

4

Organizing and editing on your camera



Working with albums

NOTE: Album settings are automatically updated when you synchronize with EasyShare software (see [page 51](#)).

Adding pictures and videos to albums



└ Edit/Album icon

- 1 In View , select a picture or video. To select multiple pictures and videos, use the drawer (see [page 23](#)).
- 2 Touch the Edit/Album icon, .
- 3 Select Album.

4 To place the selected picture or video into a new album:

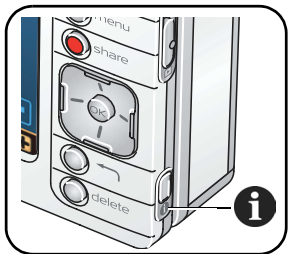
Touch New Album, then enter an album name using the touch keyboard.



To add the picture or video into an existing album:

Select the album names in which to add the picture or video.



- 5 When finished, touch Done.

Removing pictures and videos from albums





- 1 In View , press the Menu button.
- 2 Select Albums.
- 3 Select an album, then press the Info button, .
The album name, contents, and other information appears.
- 4 Select pictures and videos to remove. Touching a picture or video repeatedly adds or removes it.
- 5 When finished, touch OK.

■ Alternatively:

- 1 Select a picture or video, then press the Info button, .
- 2 Touch .
- 3 Touch albums from which to remove the picture or video. Touching an album repeatedly adds or removes the picture from the album.


Renaming albums

- 1 In View , select an album to rename.
- 2 Press the Info button, .
The album name, contents, and other information appears.
- 3 Touch the album name, then change the name using the touch keyboard. When finished, touch Done.



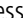

Tagging pictures and videos as favorites

In addition to arranging your pictures and videos using albums, you can tag pictures and videos as favorites for easy showcasing of your prized images.

NOTE: Pictures tagged as favorites are automatically transferred to and from your computer and are updated when synchronizing with EasyShare software (see [page 51](#)).

- 1 In View , select a picture or video. To select multiple pictures and videos, use the drawer (see [page 23](#)).




- 2 Touch the Favorite icon, . *A blue fill appears in the Favorite icon, indicating the picture or video has been tagged as a favorite.*
 - To remove the Favorite tag, touch the Favorite icon again.
- 3 Press  /  and  to scroll through and tag other favorites.

To view Favorites, see [page 17](#).

Using the drawer to select multiple pictures and videos


The drawer is the tool that lets you select multiple pictures and videos at once. It is a temporary location in your camera to place pictures and videos for viewing, organizing, sharing, editing, or changing settings.

The drawer is useful in sorting your pictures and videos, and lets you apply changes or tags to all the pictures in the drawer at once. That is, any action or setting changes you make with the drawer open are applied to all the pictures and videos in the drawer.

For example, you can place pictures and videos in the drawer, then with the drawer open, touch the Favorite icon, . As a result, all the pictures and videos in the drawer are tagged as favorites (see [page 22](#)).

To place pictures and videos into the drawer:



- 1 In View , select a picture, video, or album.
- 2 Touch the plus sign + .

The selected picture or video is placed in the drawer. (If an album is selected, all the pictures and videos in the album are placed in the drawer.)

Drawer tab
Number of pictures in drawer
Add picture or video to drawer

To view the drawer contents:

- Touch the drawer tab to open it.

To remove a picture or video from the drawer:



- 1 With the drawer open, select a picture or video.
- 2 Touch the minus sign - .

The selected picture or video is removed from the drawer.

NOTE: Pictures and videos removed from the drawer are not deleted, and still reside in their original location on the camera. To permanently delete a picture or video, see [page 26](#).

The drawer contents are emptied when the camera powers-off.


To remove *all* pictures and videos from the drawer:

- With the drawer open, touch Empty.





To close the drawer:

- Touch the drawer tab.




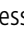


Adding or modifying a caption

- 1 In View , select a picture or video. To select multiple pictures and videos, use the drawer (see [page 23](#)).



- 2 Press the Info button, , located on the lower outside edge of the touchscreen display.
The Picture Info screen appears.
- 3 Touch .
- 4 Touch the text box, then use the touch keyboard to enter a caption.
- 5 When finished, press the Info button, , or the Back button, .

Cropping pictures



- 1 In View , select a picture.
 - 2 Touch the Edit/Album icon, .
 - 3 Select Crop.
 - 4 Press the Telephoto (T) to make the crop box smaller.
Press Wide Angle (W) to make the crop box larger.
Press     to move the crop box.
 - 5 Press the OK button to crop the picture.
A new cropped image is saved to your camera. (The original image is also retained.)
- Alternatively, you can touch and drag the crop box and touch the on-screen W - T icons to zoom in or out, as described above.



Copying pictures and videos

You can copy pictures and videos from a memory card to internal memory or from internal memory to an installed memory card.


Before you copy, make sure that a memory card is inserted in the camera ([page 11](#)).

- 1 In View , press the Menu button.
- 2 Select Storage, then select a storage location to view.
- 3 Select a picture or video, then touch the Edit/Album icon, . To select multiple pictures and videos, use the drawer (see [page 23](#)).
- 4 Select Copy, then select Yes to copy the picture or video to either internal memory or the memory card.

NOTE: Pictures and videos are copied, not moved. After copying, to remove a picture or video from its original location, find the picture or video in Storage view (see [page 17](#)), then delete it.

Tags applied for print, email, and favorites are not copied.

Deleting pictures, videos, and albums

- 1 In View , select a picture or video. To select multiple pictures and videos, use the drawer (see [page 23](#)) or select an album.
- 2 Press the Delete button.
- 3 Choose whether to continue by selecting Yes or No.

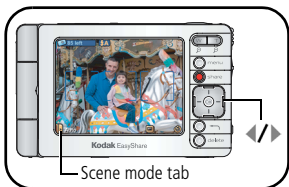
5




Taking pictures and videos: more tips and tricks

Choosing a scene mode

NOTE: Scene modes are unavailable for videos.

The default scene mode is Auto. However, you can choose from a variety of scene modes to accommodate almost any picture-taking condition. The capture settings for each mode are preset to best suit the scene. To change them, see [page 33](#).



- 1 In Capture , touch the scene mode tab.
- 2 Press   to find the scene mode that best suits your picture-taking situation. (See the following table for descriptions.)

- 3 Press the OK button to select the highlighted scene mode.

The scene mode remains until you leave still capture or turn off the camera.

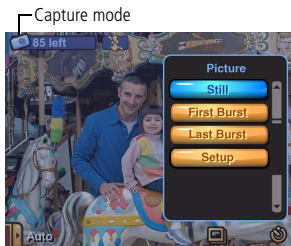
- Alternatively, you can press the Menu button then select Scenes to access the scene mode menu.

Use this mode	For
Auto	General picture-taking—offers an excellent balance of image quality and ease of use. Automatically sets exposure, focus, and flash.
Portrait	Full-frame portraits of people. Allows the subject to be sharp and the background to be indistinct. For best results, position your subject at least 6 ft (2 m) away and fill the frame with a head-and-shoulder pose. Use zoom to exaggerate background blur.
Sports	Subjects in motion. Uses fast shutter speed and Auto flash setting.

Use this mode	For
Landscape	Distant scenery. Flash does not fire.
Close-Up	Subjects closer than 24 in. (61 cm).
Night Portrait	People in night scenes or low-light conditions. Minimizes red-eye. Place the camera on a flat, steady surface or use a tripod.
Night Landscape	Distant scenery at night. Flash does not fire. Place the camera on a flat, steady surface or use a tripod.
Snow	Bright snow scenes.
Beach	Bright beach scenes and sunlit water surfaces.
Text	Copying documents. Focus is close-up.
Fireworks	Fireworks. Flash does not fire. Place the camera on a flat, steady surface or use a tripod.
Flower	Close-ups of flowers or other small subjects in bright light.
Museum / Polite	Quiet occasions, like a wedding or lecture. Flash and sound are disabled.
Self-Portrait	Close-ups of yourself. Assures proper focus and minimizes red-eye.
Party	People indoors. Minimizes red-eye.
Children	Action pictures of children in bright light.
Backlight	Subjects that are in shadow or "backlit" (when light is behind the subject).

Using burst


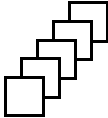

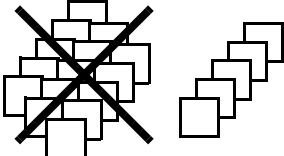
Use burst to take pictures in rapid succession. To choose a burst setting:



- 1 Touch the Capture mode icon.
- 2 Select First Burst or Last Burst (see table, below).

To return to still capture mode, select Still.
To change camera settings, select Setup.

NOTE: Burst settings are disabled for videos and for some scene modes.

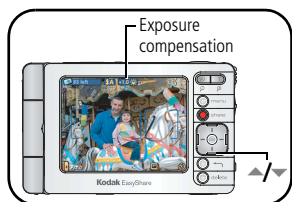
Burst setting	Description
 <p>First Burst</p> <p>Capture an expected event.</p> <p>Example: A person swinging a golf club.</p>	<p>While the Shutter button is pressed, the camera takes up to five pictures in rapid succession.</p>  <p>Pictures from start of burst series are saved</p>
 <p>Last Burst</p> <p>Capture an event when the precise timing is uncertain.</p> <p>Example: A child blowing out birthday candles.</p>	<p>While the Shutter button is pressed, the camera takes pictures in rapid succession for as long as you hold the Shutter button. When the Shutter button is released, pictures at the end of the series (up to five) are saved.</p>  <p>Pictures from end of burst series are saved</p>

NOTE: If you press Delete after taking a burst series of pictures, all pictures in the burst series are deleted. To delete a single picture in a burst series, do so in View (see [page 26](#)).

Changing exposure compensation

You can manually adjust the exposure for further control in different lighting conditions, such as bright backlight and other non-standard scenes. If the picture is too light, decrease the setting ▼ ; if it is too dark, increase the setting ▲ .

NOTE: Exposure compensation is disabled for videos.





- In Capture , press ▲/▼ to adjust the exposure compensation between -2.0 to +2.0.

This setting remains until you change modes or turn off the camera.

- Alternatively, you can touch the Exposure compensation icon repeatedly to change it.

Using the self-timer

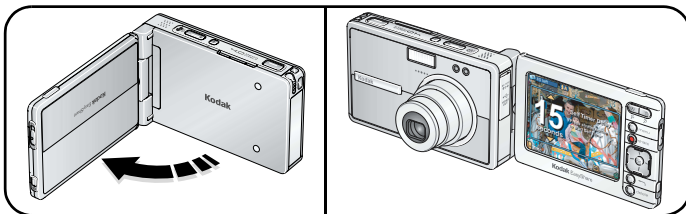
Use the Self-Timer to create a timed delay between the time you press the Shutter button and the time the picture or video is taken.

- 1 In Capture , touch the Self-Timer icon, .
- 2 Select an increment for the self-timer duration (up to 60 seconds).

For videos, set the video duration:

Choose **5**, **15**, or **30** seconds; or choose **Max**— video records as long as there is room on the card or internal memory, or until you press the Shutter button.

- 3 Open the touchscreen display and position it so that the screen faces the same direction as the lens.



- 4 Place the camera on a flat surface or tripod and compose the scene.
- 5 Press the Shutter button **halfway and hold** to set the exposure and focus, then press **completely down**. Move into the scene.

A countdown appears on the screen before the picture or video is taken.

The Self-Timer setting turns off after you take the picture or video or if you change capture modes. Video recording stops when the duration is reached or there is no storage space remaining.

- To cancel the Self-Timer during countdown or during video recording, press the Shutter button.

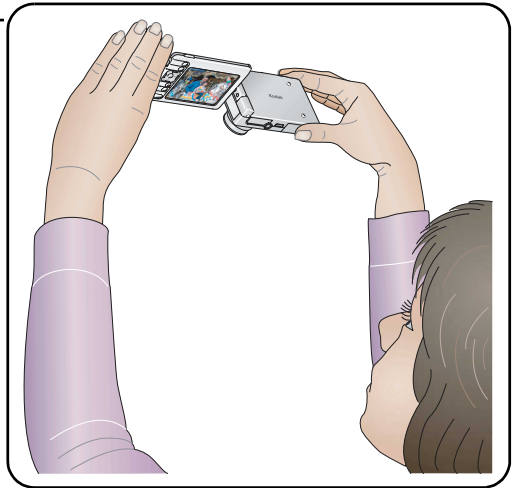
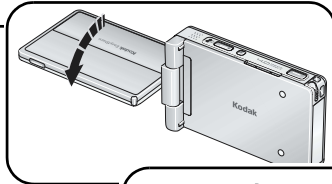
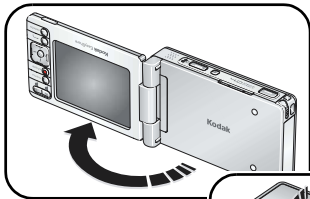
Taking overhead pictures and videos

Adjust the touchscreen display to take pictures and videos over crowds and obstacles.





CAUTION:

Rotate the display in the direction shown. Do not force.



Pre-assigning pictures to an album

You can create or assign an album in which to place your pictures and videos as you take them.

1 In Capture , touch the Capture album icon, .

2 Touch New Album to start a new album, or touch an existing album to select it.

3 When finished, touch Done.

A check mark appears in the Capture album icon.

The setting remains until you change it.

■ To stop pre-assigning pictures to the album, touch the Capture album icon again.

The check mark in the Capture album icon disappears.

Changing capture settings

1 Press the Menu button, then select Setup.

2 Touch Capture .

3 Select a setting and option to change.

NOTE: Some capture settings are unavailable in some scene modes and videos.


Setting	Options
Picture Size Choose a picture resolution. <i>This setting remains until you change it.</i>	4.0 MP (default)—for printing up to 20 x 30 in. (51 x 76 cm); pictures are highest resolution and largest file size. 3.5 MP (3:2) —ideal for printing 4 x 6 in. (10 x 15 cm) prints without cropping. Also for printing up to 11 x 14 in. (28 x 36 cm); some cropping may result due to the 3:2 aspect ratio. 2.1 MP —for printing up to 8 x 10 in. (20 x 25 cm); pictures are medium resolution with smaller file size. 1.1 MP —for printing up to 5 x 7 in. (13 x 18 cm); for emailing, Internet, or screen display; pictures are lowest resolution and smallest file size.

Setting	Options
<p>White Balance Choose your lighting condition. <i>This setting remains until you change modes or turn off the camera.</i></p>	<p>Auto (default)—automatically corrects white balance. Ideal for general picture-taking. Daylight—for pictures in natural lighting. Tungsten—corrects the orange cast of household light bulbs. Ideal for indoor pictures under tungsten or halogen lighting without flash. Fluorescent—corrects the green cast of fluorescent lighting. Ideal for indoor pictures under fluorescent lighting without flash.</p>
<p>ISO Control the camera's sensitivity to light. <i>This setting remains until you change modes or turn off the camera.</i></p>	<p>Auto (default), manual: 80, 100, 200, 400 Choose a lower ISO setting in brightly lit scenes; use a higher ISO setting in low-light scenes.</p>
<p>Date Stamp Imprint the date on pictures. <i>This setting remains until you change it.</i></p>	<p>Choose a date format, or turn on Date Stamp. (Default is Off.)</p>
<p>Red-eye Pre-flash Choose if Red-eye Pre-flash fires before a picture is taken. <i>This setting remains until you turn off the camera.</i></p>	<p>On—flash fires once before the picture is taken. Off (default)—flash doesn't fire before the picture is taken, but camera still applies internal red-eye correction to the picture.</p>
<p>Color Mode Choose color tones. <i>This setting remains until you change modes or turn off the camera.</i></p>	<p>Color (default)—for color pictures. Black & White—for black-and-white pictures. Sepia—for pictures with a reddish-brown, antique look. NOTE: EasyShare software also lets you change a color picture to black-and-white or sepia.</p>


Setting	Options
<p>Focus Zone Select a large or concentrated area of focus. <i>This setting remains until you change it.</i></p>	<p>Multi-zone (default)—evaluates 3 zones to give an even picture focus. Ideal for general picture taking. Center-zone—evaluates the small area centered in the viewfinder. Ideal when precise focus of a specific area in the picture is needed. NOTE: For the best pictures, the camera is set to Multi-zone when in Landscape mode.</p>
<p>Exposure Metering Evaluate light levels at specific areas of a scene. <i>This setting remains until you change modes or turn off the camera.</i></p>	<p>Multi-pattern (default)—evaluates lighting conditions throughout the image to give an optimum picture exposure. Ideal for general picture-taking. Center-weight—evaluates the lighting conditions of the subject centered in the viewfinder. Ideal for backlit subjects. Center-spot—similar to Center-weight, except the metering is concentrated on a smaller area of the subject centered in the viewfinder. Ideal when you need an exact exposure of a specific area in the picture.</p>
<p>Sharpness Control picture sharpness. <i>This setting remains until you change modes or turn off the camera.</i></p>	<p>High Normal (default) Low</p>
<p>Continuous AF Choose an auto-focus setting. <i>This setting remains until you change it.</i></p>	<p>On (default)—the camera continuously adjusts focus. When the Shutter button is pressed halfway, focus is locked. Off—the camera adjusts (and locks) focus only when the Shutter button is pressed halfway.</p>

Setting	Options
Video AF Turn auto-focus on or off for videos. <i>This setting remains until you change it.</i>	On (default) or Off . NOTE: The auto-focus mechanism inside the camera may be audible during playback of videos. Turning off this reduces noise, but your subject may be out of focus, especially if it is moving.
Video Zoom Turn optical zoom on or off during videos. <i>This setting remains until you change it.</i>	On (default) or Off . NOTE: Like many video cameras, the zoom mechanism inside the camera may be audible during playback of videos. Turning off this setting reduces noise but disables zoom.


Changing device settings

- 1 Press the Menu button, then select Setup.
- 2 Select Device .
- 3 Select and change settings as needed:

Setting	Options
Language	See page 6 .
Date & Time	See page 8 .
Touchscreen Calibration	See page 7 .
Slide Show Interval Set the duration of the interval between slides during slide show.	3 (default), 5 , 10 , or 30 seconds
LCD Backlight Set the duration of camera inactivity, before the screen dims to conserve battery power.	5 , 10 (default), 20 , 30 seconds, or Always On

Setting	Options
Orientation Sensor Orient pictures so that they are displayed with the correct side up.	On (default) or Off
Sound Theme	Shutter Only, Dew (default), Skies, Dunes, Days
Sound Volume	Off, Low, Medium (default), High, or Max
Video Out Choose the regional setting that lets you connect the camera to a television or other external device.	NTSC (default)—used in North America and Japan; most common format. PAL —used in Europe and China.
About View camera information.	
Format  CAUTION: Formatting deletes all pictures and videos, including those that are protected. Removing a card during formatting may damage the card.	Memory Card —deletes everything on the card; formats the card. Internal Memory —deletes everything in internal memory including email addresses, album names, and favorites; formats the internal memory.

Changing preferences

- 1 Press the Menu button, then select Setup.
- 2 Select Preferences .
- 3 Select and change settings as needed:

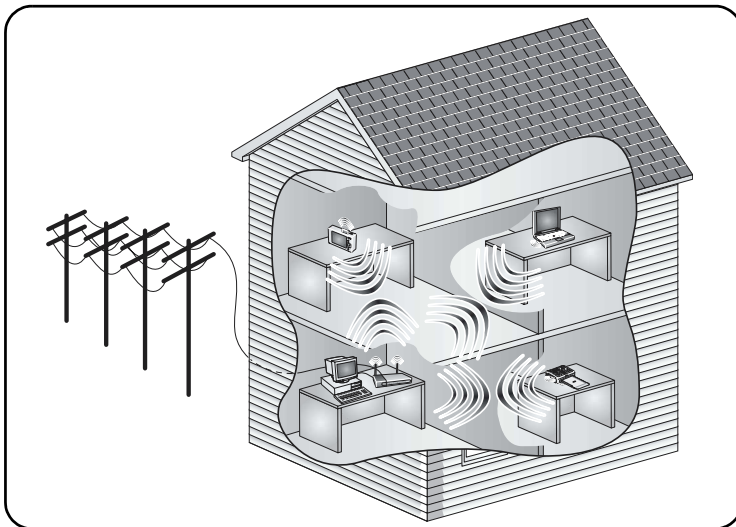
Setting	Options
Email Address	See page 9 .
The Gallery Password	See page 9 .
The Gallery URL Choose the domain name of your regional online Kodak picture service.	See page 61 .

6

Using your camera with a Wi-Fi wireless network

Why go wireless?

Perhaps the most obvious benefit of a Wi-Fi wireless network is the absence of cables or wires to connect devices on a network. Wireless devices on a Wi-Fi wireless network use radio signals to communicate and transfer data. This flexibility makes for quick and relatively easy setup of networks. Additionally, a Wi-Fi wireless network offers great portability and accessibility to networks from locations where wired connections may not be practical or are otherwise impossible.




For more information, visit www.kodak.com/go/wifisupport or www.wi-fi.org.

What are some of the wireless features of my camera?

The Kodak Wi-Fi[®] card (may be sold separately) unlocks a whole new experience in wireless network technology, allowing you to connect to a Wi-Fi wireless network* and remotely:

- Transfer pictures to your computer and synchronize with EasyShare software (see [page 51](#)).
- Email pictures directly to your friends and family (see [page 58](#)).
- Print to a Wi-Fi enabled Kodak EasyShare printer dock, photo printer, or other printer connected to a Wi-Fi wireless network (see [page 60](#)).
- Upload to, and view your pictures on KODAK EASYSHARE Gallery or your regional online Kodak picture service (see [page 61](#)).

* Uses Wi-Fi 802.11b protocol—compatible with Wi-Fi wireless 802.11b and 802.11g networks.

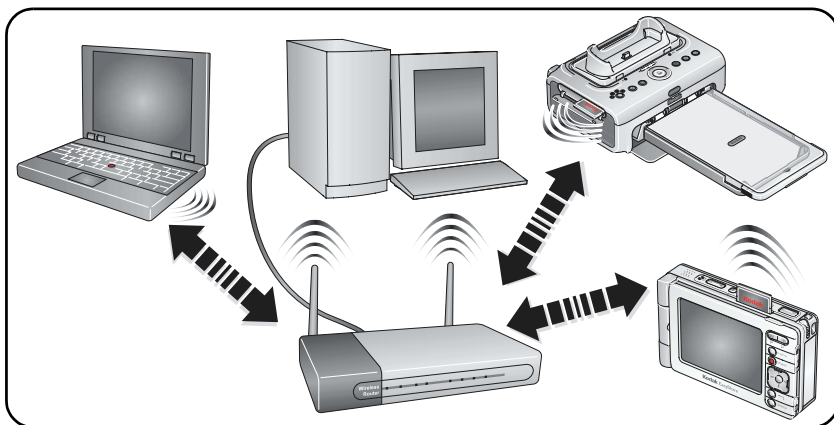
NOTE: Wireless functions are only available in View .

Types of Wi-Fi wireless networks

There are generally two types of Wi-Fi wireless networks: Infrastructure networks, and device-to-device, or Ad Hoc networks.

Infrastructure network

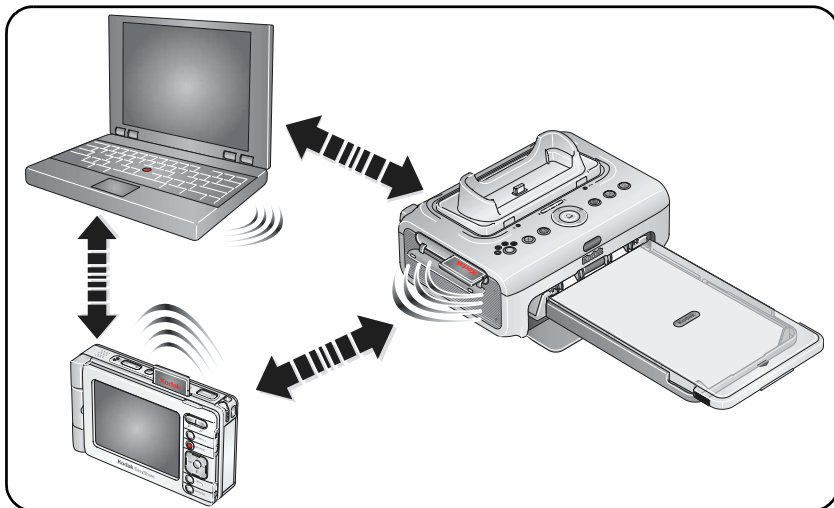
An Infrastructure network is a wireless network where data transferred between wireless devices on the network pass through a central access point (AP), such as a wireless network router.



For more information, visit www.kodak.com/go/wifisupport or www.wi-fi.org.

Ad Hoc network

An Ad Hoc, or device-to-device network is a wireless network where data is transmitted directly between wireless devices on the network, without passing through an access point.



For more information, visit www.kodak.com/go/wifisupport or www.wi-fi.org.

Wireless networking and the Internet

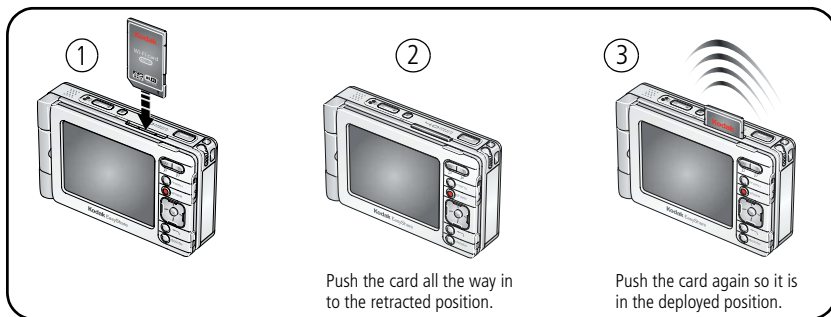
Some wireless functions on your camera, including emailing pictures (page 58), and uploading & viewing pictures on KODAK EASYSHARE Gallery (page 61) require access to the Internet. Most public networks are connected to the Internet, as are most home networks, typically through an Internet Service Provider (ISP).

Inserting and deploying a Kodak Wi-Fi[®] card



CAUTION:

Insert card as shown. Do not insert an SD or MMC card in the slot shown.



When possible, keep the Wi-Fi card in the retracted (2) position for safe-keeping and to conserve battery life. To connect to an available Wi-Fi wireless network, push the card in so that it springs back up to the deployed (3) position (see page 44).


■ To remove the Wi-Fi card: from the deployed position, pull it out.

For more information, visit www.kodak.com/go/wifisupport or www.wi-fi.org.


Connecting to a Wi-Fi wireless network

Once connected to a Wi-Fi wireless network, you can use the wireless capabilities of your camera.

NOTE: The range of a typical Wi-Fi wireless network can vary between 100 to 300 ft (30 to 90 m), depending on signal obstructions or other interference. Make sure you are in the vicinity of the Wi-Fi wireless network you want to connect to.

- 1 Slide the Capture/View switch to View .
- 2 Insert a Kodak Wi-Fi[®] card (may be sold separately) into the camera (see [page 43](#)).
- 3 Deploy the Wi-Fi card (see [page 43](#)).

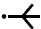

If the card is already in the deployed position, you can re-scan for available networks by:

- Touching the Wireless icon, , located on the bottom toolbar.
- Pressing the Menu button, selecting Setup, then selecting Available Networks under the Wireless menu.
- Redeploying the Wi-Fi card by retracting, then deploying the card (see [page 43](#)).


The wireless network status light (next to the Wi-Fi card slot) blinks amber as the camera scans for available networks.

- If one or more wireless networks are available, the camera checks for network profiles stored in the camera (see [page 46](#)):
 - If the settings of a profile match the settings for an available network, a connection is made according to the profile order.
 - If a matching profile is not on the camera, the camera screen lists the available networks. Select the network you want to connect to.

For each network on the list:

Connection type is designated with either  (Infrastructure) or  (Ad Hoc).

The presence of a padlock, , indicates the network requires a security key.

Relative signal strength is indicated by the number of escalating bars, . Green bars indicate a connection to the network.


If prompted, enter a security key code for the network. (Ask the network administrator for this information if it is unavailable.)

When a connection is made, the wireless network status light glows steady green.



- If a wireless network is not available or you are unable to connect:
 - You may be out of the signal range. Move within range.
 - The network may not be broadcasting its SSID or network name, so it does not appear as an available network on your camera. Set up a profile on your camera to match the network settings (see [page 46](#)) and try again.
 - Network settings may not match the settings in any of the profiles in your camera. Set up a profile on your camera to match the network settings (see [page 46](#)) and try again.

For more information, visit www.kodak.com/go/wifisupport or www.wi-fi.org.

Setting up a network profile

When you connect to a secure network, designated by a padlock, , or if you connect to an any network more than once, a profile containing the network settings is stored on your camera. Depending on the network settings, you may need to create a network profile to connect to it.



For example, if the network is not broadcasting its SSID, or network name, the network does not appear as an available network on your camera. However, if you know the SSID and other information about the network, you can manually create a profile which will allow your camera to connect:

- 1 In View , press the Menu button, then select Setup.
- 2 Select Wireless .
- 3 Select Profiled Networks.
- 4 Select Add Network Profile.
- 5 Select and change settings to match the network you want to connect to. When finished, touch Done.

For more information, visit www.kodak.com/go/wifisupport or www.wi-fi.org.

Choosing or changing a network connection

If you are connected to a Wi-Fi wireless network and you want to switch the connection to a different network, select another available network on your camera:

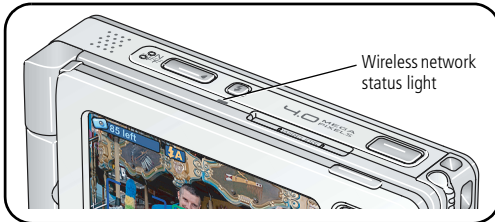
- 1 In View , press the Menu button, then select Setup.
- 2 Select Wireless .
- 3 To see a list of networks that are broadcasting in your vicinity, select Available Networks.

To see a list of networks stored on your camera, select Profiled Networks.

- 4 Select a network from the list. If prompted, enter a security key code for the network. (Ask the network administrator for this information if it is unavailable.)

For more information, visit www.kodak.com/go/wifisupport or www.wi-fi.org.

Key to the wireless network status light



See [page 43](#) for card positions.

Color - behavior	Indicates...
Off	Camera power is off; card is not inserted or is retracted
Red - Blinking	Card error; remove and reinsert
Amber - Solid	Card is deployed; no network connection
Amber - Blinking	Card is deployed; searching for a network to connect to
Green - Solid	Card is deployed; connected to a network

Glossary of common wireless terms

Access point—(Also called AP.) A wireless network transceiver or “base station” that can connect a wired local area network to one or many wireless devices. Access points can also bridge to each other.

Ad Hoc—A client setting that provides independent device-to-device connectivity in a wireless local area network. An alternative set-up is one where PCs communicate with each other through an access point.

Bridge—A product that connects a local area network to another local area network that uses the same protocol (for example, wireless, Ethernet or token ring). Wireless bridges are commonly used to link buildings in campuses.

Client—An application on a computer or device connected to a network that requests services (files, print capability) from another member of the network.

DHCP—Dynamic Host Configuration Protocol: a utility that enables a server to dynamically assign IP addresses from a predefined list and limit their time of use so they can be reassigned. Without DHCP, an IT Manager would have to manually enter in all the IP addresses of all the clients on the network. With DHCP, whenever a client logs onto the network, it automatically gets an IP address assigned to it.

DNS—Domain Name System (or Service, or Server): a program that translates URLs to IP addresses by accessing a database maintained on a collection of Internet servers. The program works behind the scenes to facilitate surfing the Web with alpha versus numeric addresses. A DNS server converts a name like mywebsite.com to a series of numbers like 107.22.55.26. Every Web site has its own specific IP address on the Internet.

DSL—Digital Subscriber Lines: various technology protocols for high-speed data, voice and video transmission over ordinary twisted-pair copper POTS (Plain Old Telephone Service) telephone wires.

Encryption key—An alphanumeric (letters and/or numbers) series that enables data to be encrypted then decrypted so it can be safely shared among members of a network. WEP uses an encryption key that automatically encrypts outgoing wireless data. On the receiving side, the same encryption key enables the computer to automatically decrypt the information so it can be read.

Infrastructure—A client setting providing connectivity to an access point. As compared to Ad Hoc mode, whereby PCs communicate directly with each other, clients set in Infrastructure Mode all pass data through a central access point. The access point not only mediates wireless network traffic in the immediate neighborhood, but also provides communication with the wired network.

IP—Internet Protocol: technology that supports voice, data and video transmission via IP-based local area networks, wide area networks, and the Internet. This includes VoIP (Voice over IP).

IP address—A number that identifies each sender or receiver of information that is sent across the Internet.

Network name—Identifies the wireless network for all the shared components. During the installation process for most wireless networks, you need to enter the network name or SSID. Different network names are used when setting up your individual computer, wired network or workgroup.

Router—A access point (AP) or device that sends data from one local area network (LAN) or wide area network (WAN) to another. A router monitors and controls data flow and sends information using the most efficient route based on traffic load, line costs, speed, bad connections, etc.

SSID—Service Set Identifier: also referred to as a network name, since it is essentially a name that identifies a wireless network. The identifier is attached to the a wireless local area network (WLAN) and acts as a password when a mobile device tries to connect to the system. A device will not be permitted to join the network unless it can provide the unique SSID. An SSID can be broadcast by the network router, allowing devices to detect it as an available network. An SSID does not supply security to the network.

SSL—Secure Sockets Layer: a commonly used encryption scheme used by many online retail and banking sites to protect the financial integrity of transactions.

TCP/IP—The underlying technology behind the Internet and communications between computers in a network.

WEP—Wired Equivalent Privacy: basic wireless security provided by Wi-Fi. In some instances, WEP may be all a home or small-business user needs to protect wireless data. WEP is available in 40-bit (also called 64-bit), or in 108-bit (also called 128-bit) encryption modes. As 108-bit encryption provides a longer algorithm that takes longer to decode, it can provide better security than basic 40-bit (64-bit) encryption.

WPA—Wi-Fi Protected Access: a Wi-Fi security standard that works with existing Wi-Fi products enabled with Wired Equivalent Privacy (WEP). It uses data encryption through the Temporal Key Integrity Protocol (TKIP). TKIP scrambles the keys and ensures that the keys haven't been tampered with. User authentication is performed through the Extensible Authentication Protocol (EAP), to ensure that only authorized network users can access the network.

Wi-Fi—Wireless Fidelity: a term developed by the Wi-Fi Alliance that is commonly used to describe any type of 802.11 standard wireless network. Products tested and approved as "Wi-Fi Certified" (a registered trademark) by the Wi-Fi Alliance are certified as interoperable with each other, even if they are from different manufacturers.

For more information, visit www.kodak.com/go/wifisupport or www.wi-fi.org.

7

Synchronizing and transferring to a computer

Connect your camera to a computer to synchronize (or "sync") with or transfer pictures and videos to your computer.

Synchronizing with Kodak EasyShare software is an easy way to organize and match the pictures on your camera with the pictures on your computer (and vice versa). More than just transferring pictures from your camera to your computer, synchronizing lets you:

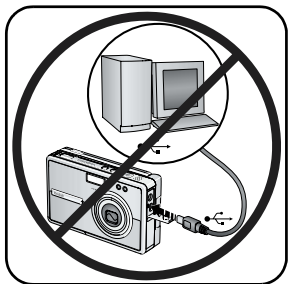
- Copy Favorites from EasyShare software on your computer to your camera*
- Synchronize picture and album information between the camera and EasyShare software
- Update the date and time on your camera with the date and time on your computer
- Synchronize address book information between your camera and EasyShare software

* If this option is selected, recently taken pictures and videos on your camera are also transferred to EasyShare software. To save storage space, EasyShare software replaces the original pictures on your camera with lower-resolution versions. These pictures are suitable for printing 4 x 6 in. (10 x 15 cm) prints.

Each time your camera connects to EasyShare software, updates are made, according to the options selected in the EasyShare software sync & transfer preferences. Click the Help button in the Kodak EasyShare software for details.

Of course, you can always transfer pictures and videos without synchronizing. Transferring allows you to copy to your computer only the pictures and videos you choose.

Installing the software



- 1 Close all software applications that are open on your computer (including anti-virus software).
- 2 Place the Kodak EasyShare software CD into the CD-ROM drive.

IMPORTANT: Use the EasyShare software CD included with your camera, or visit www.kodak.com/go/easysharesw to download a free copy.

- 3 Load the software:

Windows OS—if the install window does not appear, choose Run from the Start menu and type **d:\setup.exe** where **d** is the drive letter that contains the CD.

Mac OS X—double-click the CD icon on the desktop, then click the Install icon.

- 4 Follow the on-screen instructions to install the software.

Windows OS—select Complete to automatically install the most commonly used applications. Select Custom to choose the applications you wish to install.

Mac OS X—follow the on-screen instructions.

When prompted, register your camera and software. Registering lets you sign up for information that keeps your system up-to-date. To register later, visit www.kodak.com/go/register.

- 5 Restart the computer if prompted. If you turned off anti-virus software, turn it back on. See the anti-virus software manual for details.
- 6 Continue to follow the on-screen instructions. When prompted, enter your KODAK EASYSHARE Gallery account information or create a new account. Providing this information lets you take advantage of many wireless features of your camera.

NOTE: KODAK EASYSHARE Gallery may not be available in your area; however, you can use the EasyShare-One camera with your regional online Kodak picture service.

Setting up your camera for sync and transfer

Your camera can transfer pictures and videos to any computer running EasyShare software. However, to ensure consistent organization of images and information, your camera stores an internal identifier that allows it to synchronize with only one computer. This identifier is established and sent to your camera through the sync & transfer settings in EasyShare software.

The first time you connect to a computer, either with a USB cable or by wireless transfer, you are prompted to choose a sync & transfer option. Pick an option that best suits your situation (you may change these options in EasyShare software later):

Yes, synchronize with my software—recommended if installing on a single or "primary" computer. Each time you connect your camera with a USB cable, recently taken pictures and videos are automatically transferred to your computer. In addition, images, albums, date & time, and address book information are updated on your computer and on the camera according to the synchronization options you set in EasyShare software.

No, only transfer my pictures—recommended if installing on an additional, or "secondary" computer. Each time you connect your camera with a USB cable, pictures and videos are transferred to your computer. Synchronization is disabled.

NOTE: After connecting your camera to your computer for the first time, synchronization or transfer is automatic when connecting with a USB cable (see [page 54](#)). When connecting wirelessly, synchronization or transfer occurs only by selecting these options on your camera (see [page 55](#)).

IMPORTANT: *To avoid unintentional deletion of pictures and videos, make sure synchronization is disabled for additional computers on which you install EasyShare software. Follow the prompts closely during software installation and when connecting to your computer. Click the Help button in the Kodak EasyShare software for details.*

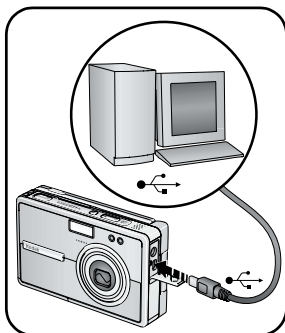
Sync and transfer with a USB connection


When you connect your camera to a computer using the USB cable, synchronization or transfer starts automatically, depending on which option you choose the first time you connect your camera. You can change this setting in EasyShare software any time. Click the Help button in the Kodak EasyShare software for details.



CAUTION:

Install Kodak EasyShare software *before* connecting the camera or to the computer. Failure to do so may cause the software to load incorrectly.



- 1 Install Kodak EasyShare software (see [page 52](#)).
- 2 Turn off the camera.
- 3 Plug the labeled  end of the USB cable into the labeled USB port on your computer. See your computer user's guide for details.
- 4 Plug the other end of the USB cable into the labeled USB port on the camera.
- 5 Turn on the camera and follow the instructions on the computer screen.

If this is the first time connecting to your computer, the setup assistant will guide you through the connection setup process. Be sure to choose a sync & transfer option when prompted (see [page 53](#)).


Pictures and videos on your camera are synchronized with or transferred to your computer according to the sync & transfer settings in EasyShare software.

Sync and transfer over a Wi-Fi wireless network

Synchronize and transfer with EasyShare software on your computer over your Wi-Fi wireless network using a Kodak Wi-Fi[®] card (may be sold separately).

Transferring pictures and videos over a Wi-Fi wireless network

IMPORTANT: *Make sure your computer is on and you are logged-in. In EasyShare software, make sure the Enable Wireless Connection option is checked (under Preferences > Wireless). Click the Help button in the Kodak EasyShare software for details.*

- 1 Connect to the same wireless network as the computer you want to transfer pictures and videos to (see [page 44](#)).
- 2 In View , select a picture or video. To select multiple pictures and videos, use the drawer (see [page 23](#)), or select an album.
- 3 Press the Share button on the camera, then select Transfer.
The camera checks for available computers running EasyShare software on the Wi-Fi wireless network.
- 4 If one or more computers running EasyShare software are available, on your camera select the computer you want to transfer your pictures and videos to.
 - If prompted, select an authentication option on your computer to authorize your camera to transfer. Click the Help button in the Kodak EasyShare software for details.
 - If this is the first time connecting to your computer, on your computer select a sync & transfer option when prompted (see [page 53](#)).

Transfer starts, and a message appears on the camera screen indicating the transfer status.


NOTE: If the camera is also connected via the USB cable when attempting to transfer wirelessly, pictures are transferred to the computer through the USB connection.

See [Using your camera with a Wi-Fi wireless network, page 39](#) for more information.

Synchronizing with EasyShare software over a Wi-Fi wireless network

IMPORTANT: Make sure your computer is on and you are logged-in. In EasyShare software, make sure the Enable Wireless Connection option is checked (under Preferences > Wireless). Click the Help button in the Kodak EasyShare software for details.

NOTE: If this is the first time connecting to your computer, the synchronize feature on the camera is not functional. You must first designate your computer for synchronizing with your camera, either by connecting the camera to the computer with a USB cable, or through wireless transfer (see [page 53](#)). Once connected, change sync & transfer settings in EasyShare software. Click the Help button in the Kodak EasyShare software for details.

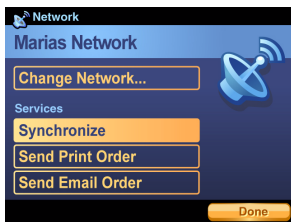
- 1 Connect to the same wireless network as the computer you have established for synchronizing (see [page 44](#)).
- 2 Touch the Wireless icon,  located on the bottom toolbar.
- 3 On the camera, select Synchronize.
 - If prompted, select an authentication option on your computer to authorize your camera to connect wirelessly. Click the Help button in the Kodak EasyShare software for details.

Synchronization starts, and a message appears on the camera screen and computer screen indicating the transfer status.

- 4 When finished, touch Done.

NOTE: If the camera is also connected via the USB cable when attempting to synchronize wirelessly, pictures are transferred to the computer through the USB connection.

See [Using your camera with a Wi-Fi wireless network, page 39](#), or visit www.kodak.com/go/wifisupport for more information.



Sharing pictures and videos

With the Kodak EasyShare-One zoom digital camera, sharing pictures with your family and friends has never been more convenient. In addition to giving you several ways to print and email your pictures, the brilliant 3 in. (7.6 cm) hybrid LCD touchscreen lets you show-off your pictures and videos from the palm of your hand.



For even greater versatility, connect to the Internet on a Wi-Fi wireless network to view your pictures on KODAK EASYSHARE Gallery. Coupled with the ability to store up to 1500 (optimized for viewing on the camera), your Kodak EasyShare-One camera is the ultimate personal sharing device.

Do it from your camera—just press Share!



Press the Share button to print and email pictures, to upload pictures online to KODAK EASYSHARE Gallery, and to transfer pictures and videos to your computer.

1 Press the Share button:

- In Capture , to share the most recent picture or video taken.
- In View , to share the pictures and videos you select.

2 Select a Share option:

Email—send pictures to friends and family over the Internet (see [page 58](#)).

Prints—print pictures right away over a Wi-Fi wireless network, or tag them for printing at a later time (see [page 60](#)).

Upload—add pictures to your KODAK EASYSHARE Gallery albums (see [page 61](#)).

Transfer—transfer pictures to your computer (see [page 64](#)).


Slide Show—watch a slide show of your albums (see [page 65](#)).

Setup—change camera settings.

Sending email over a Wi-Fi wireless network

Use the email feature to invite your family and friends to view your albums on KODAK EASYSHARE Gallery.

NOTE: Your camera uses an Internet connection and KODAK EASYSHARE Gallery to email pictures remotely. KODAK EASYSHARE Gallery may not be available in your area; however, you can use the EasyShare-One camera with your regional online Kodak picture service.

- 1 In View , select a picture. (In Capture, the most recent picture taken is automatically selected). To select multiple pictures, use the drawer (see [page 23](#)) or select an album.
- 2 Press the Share button, then select Email. Touch Start to begin.
- 3 Touch a name from the list, or touch Add Person to create a new entry.
- 4 Use the touch keyboard to enter a subject and a message.
- 5 When finished, touch Done.


If connected to an available Wi-Fi wireless network with an Internet connection, the email is sent to the selected person. Otherwise, the email is placed in the outbox (see [page 69](#)).

NOTE: An email message inviting the recipients to view your pictures is sent from your KODAK EASYSHARE Gallery account. If this is the first time emailing the selected pictures, a new album is created in your KODAK EASYSHARE Gallery account.

- With an available Wi-Fi wireless network with an Internet connection, you can even email albums stored in your KODAK EASYSHARE Gallery collection. See [page 64](#).


See [Using your camera with a Wi-Fi wireless network, page 39](#), or visit www.kodak.com/go/wifisupport for more information.

Creating and managing an address book

- 1 Press the Menu button, then select Setup.
- 2 Select Contacts .
- 3 Touch a name from the list, or touch Add Person to enter a new name. Use the touch keyboard to enter contact information, including email address.



NOTE: You can also create and manage an address book using EasyShare software on your computer, then synchronize to update your camera (see [page 51](#)). Click the Help button in the Kodak EasyShare software for details.

Creating and managing group lists

- 1 Press the Menu button, then select Setup.
- 2 Select Groups .
- 3 Touch a group from the list, or touch Add Group to enter a new group.
- 4 Use the touch keyboard to enter a group name, then select contacts from your address book to add to the group.

NOTE: You can also create and manage an address book using EasyShare software on your computer, then synchronize to update your camera (see [page 51](#)). Click the Help button in the Kodak EasyShare software for details.

Printing pictures over a Wi-Fi wireless network

- 1 In View , select a picture. (In Capture, the most recent picture taken is automatically selected). To select multiple pictures, use the drawer (see [page 23](#)) or select an album (videos are excluded).
- 2 Press the Share button, then select Prints.
- 3 Press  to select the number of copies to print.
- 4 When finished, press the OK button or touch Done.

If connected to an available Wi-Fi wireless network with one or more connected printers, the print is sent to the printer you select. Otherwise, the picture is placed in the outbox (see [page 69](#)).

NOTE: For the best 4 x 6 in. (10 x 15 cm) prints, set the camera to the (3:2) Picture Size setting (see [page 33](#)).

See [Using your camera with a Wi-Fi wireless network, page 39](#), or visit www.kodak.com/go/wifisupport for more information.

Accessing KODAK EASYSHARE Gallery from your camera

With a Kodak Wi-Fi® card (may be sold separately) and available Wi-Fi wireless network with an Internet connection, you can logon to your EASYSHARE Gallery account, then upload, view, and email pictures right from your camera.


Visit www.kodakgallery.com to create a free account. Then, enter your account information on your camera (see [page 9](#)).

NOTE: KODAK EASYSHARE Gallery may not be available in your area; however, you can use the EasyShare-One camera with your regional online Kodak picture service.


Setting the Gallery domain name

In addition being connected to a Wi-Fi wireless network with Internet connection (see [page 39](#)), to use the EASYSHARE Gallery features of your camera, you must choose the proper domain name, or URL, for the region you live in. You are prompted to choose one the first time you connect to EASYSHARE Gallery.

To change it:

- 1 Press the Menu button, then select Setup.
- 2 Select Preferences .
- 3 Touch The Gallery URL.
- 4 Select the URL for the region you live in.


Uploading pictures to the Gallery

- 1 Make sure the account settings on your camera match your EASYSHARE Gallery account settings (see [page 9](#)).
- 2 Connect to a Wi-Fi wireless network with Internet connection (see [page 39](#)). If this is the first time connecting to EASYSHARE Gallery, select your regional online picture service domain when prompted. To change your regional domain after setting it, see [page 61](#).
- 3 In View , select a picture. To select multiple pictures, use the drawer (see [page 23](#)) or select an album.
- 4 Press the Share button, then select Upload.

The camera checks for an Internet connection and regional EASYSHARE Gallery service.

- If services are available, the camera connects to EASYSHARE Gallery. Follow the instructions on the screen.
A message appears on the screen indicating the upload status.
- If a service is not available, try again when and where services are available.

Viewing pictures on the Gallery

- 1 Make sure the account settings on your camera match your EASYSHARE Gallery account settings (see [page 9](#)).
- 2 Connect to a Wi-Fi wireless network with Internet connection (see [page 39](#)). If this is the first time connecting to EASYSHARE Gallery, select your regional online picture service domain when prompted. To change your regional domain after setting it, see [page 61](#).
- 3 In View , press the Menu button.
- 4 Select The Gallery to view your albums, or select Friends' Albums to view the albums of others that have been saved to your account.





The camera checks for an Internet connection and regional EASYSHARE Gallery service.

- If services are available, the camera connects to EASYSHARE Gallery, and lets you view your albums and pictures.
- If a service is not available, try again when and where services are available.

Viewing a slide show of your pictures on the Gallery

- While viewing pictures in your EASYSHARE Gallery collection, touch the Slide show icon, .

Pictures from the current album are displayed every 3 seconds. The slide show repeats after it cycles through all images in the album.

- To move forward or backward through the slide show order, press .
- To pause the slide show, press . To resume, press  .
- To end the slide show any time, touch the screen or press the OK button.
- To view the slide show on your TV, connect the camera to the TV, then run the slide show (see [page 66](#)).

Emailing from the Gallery

- 1 While viewing albums in your EASYSHARE Gallery collection (see [page 63](#)), select an album, then press the Share button.
- 2 Select Email.
- 3 Touch a name from the list, or touch Add Person to enter a new name.
- 4 Use the touch keyboard to enter a subject and a message.
- 5 When finished, touch Done.

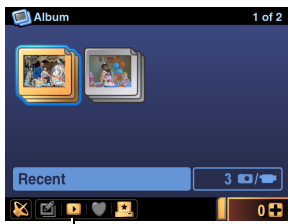
The email is sent to the selected person.



Transferring pictures and videos to a computer

You can transfer pictures and videos from your camera to any computer that has EasyShare software installed. Use the USB cable to transfer automatically, or select pictures on your camera then select Transfer from the Share menu to transfer over your Wi-Fi wireless network.








See [Synchronizing and transferring to a computer, page 51](#).





Viewing a slide show



- 1 In View , press the Menu button then select a View option (see [page 17](#)).
- 2 Press the Share button, then select Slide Show. Or, touch the Slide show icon, .

Pictures and videos from the album are displayed every 3 seconds. The slide show repeats after it cycles through all images in the album.

- To move forward or backward through the slide show order, press  .
- To pause the slide show, press . To resume, press    .
- To end the slide show any time, press the OK button.
- To view the slide show on your TV, connect the camera to the TV (see [page 66](#)), then run the slide show.

NOTE: The display switches from the camera screen to the TV screen when a connection is made. Use the 4-way controller     to control the camera functions when connected to a TV.


More ways to share your pictures and videos

Displaying pictures and videos on a television

You can display pictures and videos on a television, computer monitor, or any device equipped with a video input. (Image quality on a television screen may not be as good as on a computer monitor or when printed.)

NOTE: Ensure that the Video Out setting (NTSC or PAL) is correct (see [page 36](#)). If you are viewing a slide show (see [page 65](#)), the slide show stops if you connect or disconnect the cable during the slide show.

- 1 Connect the audio/video cable (included) from the camera A/V Out/USB port to the television video-in port (yellow) and audio-in port (white). See your television user's guide for details.

NOTE: The display switches from the camera screen to the TV screen when a connection is made. Use the 4-way controller  to control the camera functions when connected to a TV.

- 2 View pictures and videos on the television.

Emailing pictures from your computer


Use EasyShare software on your computer to send pictures over the Internet to your friends and family.

Or, try using EasyShare software to quickly set up an address book or a group list. Next time you synchronize your camera with EasyShare software (see [page 51](#)), the address book and group lists you created are added to your camera. For details, click the Help button in the Kodak EasyShare software.

Using the quick print option



Quick print icon

Touch the Quick print icon, , to print a single copy of the selected picture over your Wi-Fi wireless network to a printer on the same network (see [Using your camera with a Wi-Fi wireless network, page 39](#)).

If you are not connected to a Wi-Fi wireless network, or if a printer is not available, pictures tagged for printing are placed in the outbox (see [page 69](#)).

Docking and printing on a Kodak EasyShare printer dock

Dock your camera to a compatible EasyShare printer dock and print directly—with or without a computer (see [Dock compatibility, page 89](#)).

In addition, you can print to a Wi-Fi enabled Kodak EasyShare printer dock or photo printer directly over a Wi-Fi wireless Ad Hoc network connection. For more information about the Wi-Fi wireless capabilities of your camera, see [page 39](#).

Printing from your computer

For details on printing pictures from your computer, click the Help button in the Kodak EasyShare software or view the documentation for the software application you want to print from.

Printing from an optional SD/MMC card

- Automatically print tagged pictures when you insert your card into a printer with an SD/MMC card slot. See [page 71](#) and your printer user's guide for details.
- Make prints at an SD/MMC card-capable Kodak picture maker. (Contact a location prior to visiting. See www.kodak.com/go/picturemaker.)
- Take the card to your local photo retailer for professional printing.

Visit EASYSHARE Gallery from your computer

Discover a world of sharing options when you access EASYSHARE Gallery on the Internet using your computer. KODAK EASYSHARE Gallery is one of several online print services offered in the Kodak EasyShare software. You can easily:

- Upload your pictures to albums on KODAK EASYSHARE Gallery.
- Edit, enhance, and add borders to your pictures.
- Store pictures, and share them with family and friends.
- Order high-quality prints, photo greeting cards, frames, and albums—and have them delivered to your home, or to the homes of your friends and family. EASYSHARE Gallery will even address the envelopes and mail them for you.

Visit www.kodakgallery.com to create your free account.


NOTE: KODAK EASYSHARE Gallery may not be available in your area; however, you can use the EasyShare-One camera with your regional online Kodak picture service.

The outbox


When sending email over a Wi-Fi wireless network (see [page 58](#)), if a Wi-Fi wireless network with Internet service or regional online picture service is not available, pictures tagged for email are placed in the outbox for future delivery.

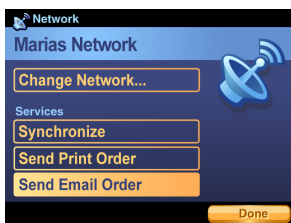
Similarly, when printing over a Wi-Fi wireless network (see [page 60](#)), if a Wi-Fi wireless network with a connected printer is not available, pictures tagged for printing are placed in the outbox for future delivery.

Viewing pictures in the outbox

- 1 In View , press the Menu button, then select Outbox.
- 2 Select Email or Prints.

Sending email


- 1 Connect to a Wi-Fi wireless network with an Internet connection (see [page 39](#)).
- 2 Touch the Wireless icon, , located on the bottom toolbar.

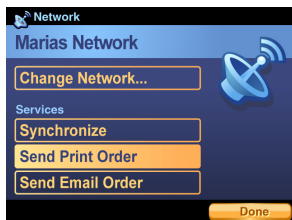


- 3 Select Send Email Order.
A message appears on the screen indicating current activity and status.
- 4 Touch Done.
Emails are sent and are removed from the outbox.

- Alternatively, you can send tagged pictures for email by synchronizing with EasyShare software (see [page 51](#)).

Sending pictures for print

- 1 Connect to a Wi-Fi wireless network (see [page 39](#)).
- 2 Touch the Wireless icon, , located on the bottom toolbar.



- 3 Select Send Print Order.

A message appears on the screen indicating current activity and status.

- 4 Touch Done.

Pictures are sent to the printer and are removed from the outbox.

- Alternatively, you can send pictures for printing through EasyShare software on your computer. Connect to EasyShare software through synchronization or transfer (see [page 51](#)).

Creating a print order on a memory card

You can make a digital print order file (DPOF) from pictures on an inserted memory card with the pictures in the outbox. Once a print order has been created, simply remove the card from your camera, then insert it into a Kodak picture maker or a compatible EasyShare printer dock or photo printer (with card reader) for fast, convenient printing.



NOTE: To ensure pictures you select for print are placed in the outbox rather than printed immediately, avoid connecting the camera to your computer or to a Wi-Fi wireless network. For best results, keep the Wi-Fi card in the retracted position while selecting pictures (see [page 43](#)).

1 Make sure an SD or MMC memory card is inserted in the camera (see [page 11](#)).

2 In View , select a picture *located on the memory card*.

NOTE: A print order can only be created with pictures on the memory card. To include pictures from internal memory in the print order, first copy them to the card (see [page 26](#)).

3 Press the Share button, then select Prints.

4 Press / to select the number of copies to print, then press the OK button.

Repeat steps 2-4 for each picture you want to add to the print order.


5 Press the Menu button, then select Outbox.

6 Select Card Print Order.

7 Follow the instructions on the screen. When finished touch Done.

The print order is created on the memory card.



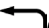
Removing email from the outbox

- 1 In View , press the Menu button, then select Outbox.
- 2 Select Email.
- 3 Select an email then press the Delete button.

The picture is removed from the outbox. (The picture is not deleted from the original location on the camera.)

NOTE: The accompanying email text message is also deleted.

Removing pictures for print from the outbox

- 1 In View , press the Menu button, then select Outbox.
- 2 Select Prints.
- 3 Select a picture then press  to set the print quantity to zero.
- 4 Press the Back button, , to exit.



NOTE: The picture is not deleted from the original location on the camera.



9

Troubleshooting

Camera

For step-by-step product support, visit www.kodak.com/go/easyshare-onesupport and select Interactive Troubleshooting & Repairs.

Problem	Cause and/or solution
Camera does not turn on	<ul style="list-style-type: none"> ■ Remove the battery and verify that it is the correct type. Before reinserting, be sure the battery is oriented so that the battery contacts line-up with the contacts inside the battery slot on the camera (page 3). ■ Place the camera on a compatible Kodak EasyShare camera dock or printer dock (sold separately), then try again. ■ Connect the camera to a Kodak 5-volt AC adapter (sold separately), then try again. <p>See page 93 for more battery information.</p>
Camera does not turn off and the lens does not retract	
Camera buttons and controls do not function	
Lens does not extend when camera turns on	<ul style="list-style-type: none"> ■ Camera may be in View . Slide the Capture/View switch to the Capture  position to extend lens and take pictures. ■ Remove the battery and wipe the contacts with a clean, dry cloth. ■ Insert a charged battery (page 3). ■ Turn the camera off then on again (page 4).
Pictures remaining number does not decrease after you take a picture	<ul style="list-style-type: none"> ■ Continue taking pictures. The camera is operating normally. (The camera estimates the number of pictures remaining after each picture is taken, based on picture size and content.)
Picture orientation is not accurate	<ul style="list-style-type: none"> ■ Set the Orientation Sensor to ON (page 36). ■ The camera lens is pointing straight up or straight down. Tilt camera slightly to allow the camera to better detect orientation.
Flash does not fire	<ul style="list-style-type: none"> ■ Check the flash setting and change as needed (page 15).

Problem	Cause and/or solution
Storage location is almost or entirely full	<ul style="list-style-type: none"> ■ Transfer pictures and videos to the computer (page 51). ■ Delete unwanted pictures and videos, or insert a new memory card (page 11). ■ Change the image storage location to internal memory by removing the memory card.
You cannot take a picture	<ul style="list-style-type: none"> ■ Slide the Capture/View switch to the Capture  position. ■ Turn the camera off, then on again (page 4). ■ Depress the shutter button completely down (page 12). ■ Insert a new or charged battery (page 3). ■ Wait until the AF framing brackets turn green before attempting to take another picture (page 12).
Cannot locate a picture	<ul style="list-style-type: none"> ■ Slide the Capture/View switch to the View  position and press the Menu button to choose an appropriate view option. ■ The picture may have been transferred to EasyShare software during synchronization, and removed from your camera. Check the sync & transfer settings in your EasyShare software. Click the Help button in the Kodak EasyShare software for details.
Slide show does not run on an external video device	<ul style="list-style-type: none"> ■ Adjust the camera Video Out setting (NTSC or PAL, page 36). ■ Make sure that the external device settings are correct (see the device's user's guide).
Error message appears on the screen	<ul style="list-style-type: none"> ■ Turn the camera off (page 4). ■ Remove the memory card from the camera (page 11). ■ Remove the battery and wipe the contacts with a clean, dry cloth. ■ Insert a charged battery (page 3). ■ Turn the camera off then on again (page 4).
Memory card not recognized or camera freezes with card	<ul style="list-style-type: none"> ■ Card may be corrupted. Format card in camera (page 36). ■ Use another memory card.

Problem	Cause and/or solution
A memory card is inserted in the Wi-Fi card slot	<ul style="list-style-type: none"> ■ Using a separate memory card to remove it: with contacts facing out, insert the card into the Wi-Fi card slot. Gently push the card against the inserted card to unseat it from the connector. Remove the card by inverting the camera.

Picture quality

Problem	Cause and/or solution
Picture is too dark	<ul style="list-style-type: none"> ■ Reposition the camera for more available light. ■ Use Fill flash (page 15) or change your position so light is not behind the subject. ■ Move so that the distance between you and the subject is within the effective flash range (page 15). ■ To automatically set exposure and focus, press the Shutter button halfway. When the AF framing brackets turn green, press the Shutter button completely down to take the picture. ■ Increase the exposure compensation (page 30).
Picture is too light	<ul style="list-style-type: none"> ■ Reposition the camera to reduce the amount of available light. ■ Turn flash off (page 15). ■ Move so that the distance between you and the subject is within the effective flash range (page 15). ■ To automatically set exposure and focus, press the Shutter button halfway. When the AF framing brackets turn green, press the Shutter button completely down to take the picture. ■ Decrease the exposure compensation (page 30).

Problem	Cause and/or solution
Picture is not clear	<ul style="list-style-type: none"> ■ Select a scene mode that matches the scene you are trying to capture (page 27). ■ To automatically set exposure and focus, press the Shutter button halfway. When the AF framing brackets turn green, press the Shutter button completely down to take the picture. ■ Clean the lens (page 94). ■ Make sure the camera is not in Close-up mode if you are more than 21 in. (0.7 m) from your subject. ■ Place the camera on a flat, steady surface or use a tripod, especially in high-zoom settings or in low light.

USB connection to computer

Problem	Cause and/or solution
Computer does not communicate with the camera	<ul style="list-style-type: none"> ■ Turn on the camera (page 4). ■ Turn on, or "wake-up" the computer. ■ Insert a charged battery (page 3). ■ Make sure the USB cable is securely connected on the camera and the computer port (page 53). ■ Make sure that EasyShare software is installed (page 52).
Pictures and videos do not transfer to computer	<ul style="list-style-type: none"> ■ Click the Help button in the EasyShare software.

Wireless network connection

Problem	Cause and/or solution
<p>Camera cannot connect to the network</p>	<ul style="list-style-type: none"> ■ Make sure a Kodak Wi-Fi[®] card is correctly inserted in the camera. ■ Make sure the camera is turned on and has adequate battery power. ■ Make sure the wireless router and network are running before the camera begins scanning for a network. ■ Make sure you are within the recommended operating range. ■ The network profile on your camera is incorrect. Change the SSID, security, and mode settings on the camera to match those of the network. ■ There is interference in the wireless signal (such as a microwave oven or a cordless telephone).
<p>Camera cannot connect to KODAK EASYSHARE Gallery (or regional online Kodak picture service), or service is interrupted</p>	<ul style="list-style-type: none"> ■ The wireless router is not connected to Internet or an Internet connection is unavailable. ■ The online picture service is unavailable. ■ There is no online Kodak picture service in the region. ■ A firewall is blocking the camera from accessing Internet. ■ The proxy setting on the camera is incorrect (if required). ■ The IP address setting on the camera is incorrect. Change the IP address on the camera or set to Dynamic IP. ■ The email address and/or password on camera are incorrect. ■ There is a problem with the network (see above).

Problem	Cause and/or solution
<p>Camera cannot connect to the expected EasyShare software</p>	<ul style="list-style-type: none"> ■ Authentication in EasyShare software is needed the first time connecting. Click the Help button in the Kodak EasyShare software for details. ■ The Enable Wireless Connection option in EasyShare software is not checked. Click the Help button in the Kodak EasyShare software for details. ■ EasyShare software is not running. Open EasyShare software. Once open, you may close the active session, however make sure the Kodak logo appears in your system tray. ■ EasyShare software is not installed. Load the EasyShare software CD that came with the camera or download from the Web (www.kodak.com/go/easysharesw). ■ The camera is connected to the wrong wireless router using the same setting. ■ The EasyShare software is an older version that doesn't support wireless service. Load the software CD that came with the camera, or download the latest software from the Web (www.kodak.com/go/easysharesw). ■ The computer is on a different network. Configure your computer and camera network settings so they match. ■ There is a problem with the network (see above).

Synchronization and transfer

Problem	Cause and/or solution
Synchronization/transfer stops or does not start	<ul style="list-style-type: none"> ■ The computer has entered standby or hibernation. ■ The camera is disconnected (during authentication and setup), possibly due to: <ul style="list-style-type: none"> – Camera turning off – Distance (weak signal) – Interference (such as a microwave oven or a cordless telephone) – The wireless router shutting down – Wi-Fi card not properly inserted ■ Synchronization/transfer is not set in EasyShare software (see EasyShare software Help for details). ■ Set up and authenticate the camera on EasyShare software (see EasyShare software Help for details).
Synchronization/transfer is slow	<ul style="list-style-type: none"> ■ The network is slow possibly due to: <ul style="list-style-type: none"> – Distance (weak signal) – Interference (such as a microwave oven or a cordless telephone) ■ The computer is slow, possibly due to: <ul style="list-style-type: none"> – Processing other tasks – Disk space is full – Low processor speed ■ The wireless router is set to slow transfer rate.
Incomplete transfer or missing images	<ul style="list-style-type: none"> ■ There is not enough disk space left on the computer. ■ The transfer was interrupted (see above).

Printing

Problem	Cause and/or solution
Printing does not start	<ul style="list-style-type: none"> ■ The printer power is off. ■ Printer is busy printing or is engaged in another session. ■ Printer has a full buffer. ■ Printer is in an error state. Correct the error. ■ The printer, camera, or computer (if using one) are not connected to the network or are on different networks. ■ The IP address setting on the camera or printer is incorrect. Change the IP address or set to Dynamic IP. ■ There is a problem with the network (see page 77).
Camera prints to the wrong printer	<ul style="list-style-type: none"> ■ The selected printer has the same name as the intended one, and is on the same network.
Print is not complete	<ul style="list-style-type: none"> ■ The printer was disconnected from the network in mid-print.

Helpful links

Camera	Get support for your product (FAQs, troubleshooting information, etc.)	www.kodak.com/go/easysshare-onesupport www.kodak.com/go/wifisupport
	Purchase camera accessories (camera docks, printer docks, lenses, cards, etc.)	www.kodak.com/go/easysshare-oneaccessories
	Download the latest camera firmware and software	www.kodak.com/go/easysshare-onedownloads
	See online demonstrations of your camera	www.kodak.com/go/howto
Software	Get information on EasyShare software	www.kodak.com/go/easyssharesw (or click the Help button in the EasyShare software)
	Get help with the Windows operating system and working with digital pictures	www.kodak.com/go/pcbasics
Other	Get support for other cameras, software, accessories, more	www.kodak.com/go/support
	Get information on Kodak EasyShare printer docks	www.kodak.com/go/printerdocks
	Get information on Kodak inkjet products	www.kodak.com/go/inkjet
	Optimize your printer for truer, more vibrant colors	www.kodak.com/go/onetouch
	Register your camera	www.kodak.com/go/register

Telephone customer support

If you have questions concerning the operation of the software or camera, you may speak with a customer support representative. Before you call, have the camera or dock connected to your computer. Be at your computer, and have the following information available:

- Computer model, Operating system
- Processor type and speed (MHz)
- Amount of memory (MB) and free hard disk space
- Camera serial number
- Version of Kodak EasyShare software
- Exact error message you received

Australia	1800 147 701	Greece	00800 441 40775	Singapore	800 6363 036
Austria	0179 567 357	Hong Kong	800 901 514	Spain	91 749 76 53
Belgium	02 713 14 45	India	91 22 617 5823	Sweden	08 587 704 21
Brazil	0800 150000	Italy	02 696 33452	Switzerland	01 838 53 51
Canada	1 800 465 6325	Japan	03 5540 9002	Taiwan	0800 096 868
China	800 820 6027	Korea	00798 631 0024	Thailand	001 800 631 0017
Denmark	3 848 71 30	Netherlands	020 346 9372	Turkey	00800 448 827073
Indonesia	001 803 631 0010	New Zealand	0800 440 786	UK	0870 243 0270
Ireland	01 407 3054	Norway	23 16 21 33	US (toll-free) / (toll)	1 800 235 6325 / 585 781 6231
Finland	0800 1 17056	Philippines / Metro Manila	1 800 1 888 9600 / 632 6369600	International Toll Line	+44 131 458 6714
France	01 55 1740 77	Poland	00800 441 1625	International Toll Fax	+44 131 458 6962
Germany	069 5007 0035	Portugal	021 415 4125		

Visit www.go/dfiswwcontacts.

Notice of Limitations to Wireless Support

Kodak Service and Support *will* assist you with:

- Installing and setting up Kodak EasyShare software, version 5.0 or higher
- Using and setting up the Kodak EasyShare-One zoom digital camera, or a Wi-Fi enabled Kodak EasyShare printer dock or photo printer on an Infrastructure or Ad Hoc Wi-Fi wireless network

Before calling for wireless problems with the Kodak EasyShare-One zoom digital camera, please make sure you have a working Wi-Fi wireless network.

Kodak Service and Support cannot assist you with:

- Installing or setting up a wireless Infrastructure network
- Installing or setting up wireless cards or equipment not manufactured by Kodak
- Installation or setting up drivers or software not manufactured by Kodak
- Problems with your Internet connection, or cable, DSL, or dial-up equipment
- Problems with your Internet Service Provider

For problems setting up your wireless network, please contact the manufacturer of your wireless network equipment, or contact your network administrator for assistance.


10 Appendix

Camera specifications

For more specifications, visit www.kodak.com/go/easyshare-onesupport.

EasyShare-One zoom digital camera specifications	
CCD	
CCD	1/2.5 in. Interline Transfer CCD, 4:3 aspect ratio
Output image size (image quality mode)	4.0 MP: 2304 x 1728 pixels 3.5 MP (3:2): 2304 x 1536 pixels 2.1 MP: 1656 x 1242 pixels 1.1 MP: 1200 x 900 pixels
Display	
Color display	3.0 in. (7.6 cm) hybrid LCD, 960 x 240 (230K - RGB) pixels, Touchscreen
Preview	Frame rate: 30 fps Field-of-view: 100%. Continuous AF, AE, AWB
Lens	
Taking lens	3X optical zoom, f/2.8–4.8, 36–108 mm (35 mm film camera equivalent)
Focus system	Auto focusing, TTL-AF, Multi-Zone TTL-AF locked at halfway shutter press in Capture Working range: 24 in. (60 cm)–infinity @ wide and telephoto normal 4–28 in. (10–70 cm) @ wide macro 17–28 in. (43–70 cm) @ telephoto macro 33 ft (10 m)–infinity in Landscape mode

EasyShare-One zoom digital camera specifications	
Digital zoom	1.0–3.3X with 0.3X step Not supported for video
Accessory lens thread	Not supported
Lens cover	Yes, in camera
Exposure	
Exposure metering	TTL-AE Multi-pattern AE, Center-weight, Center-spot AE AE (@ still) locked at halfway shutter press, Continuous AE (@ video and preview)
Exposure range	AE Range (@ wide): EV 4.4–15.3 (1/2 sec. @ f/2.9 to 1/1400 sec. @ f/4.7) Full Range (@ wide): EV 1.4–15.3 (4 sec. @ f/2.9 to 1/1400 sec. @ f/4.7)
Exposure compensation	±2.0 EV with 0.3 EV step
Shutter	Mechanical shutter with CCD electrical shutter 1/1448–1/2 sec.
ISO speed	Auto, manual: 80, 100, 200, 400
Flash	
Electronic flash	Guide no. 8.0 @ ISO 100 Auto flash 2–10.5 ft (0.6–3.2 m) @ Wide 2–7.5 ft (0.6–2.3 m) @ Tele
Flash modes	Auto, Fill, Red-eye, Off
Capture	
Scene modes	Auto, Portrait, Sports, Landscape, Close-Up, Night Portrait, Night Landscape, Snow, Beach, Text, Fireworks, Flower, Museum/Polite, Self-Portrait, Party, Children, Backlight

EasyShare-One zoom digital camera specifications	
Burst mode	Maximum 5 pictures AE, AF, AWB executed for first shot only
Video capture	Image size: VGA (640 x 480) Frame rate: 24 fps
Image file format	Still: EXIF 2.21 (JPEG compression), file organization DCF Video: QuickTime (CODEC MPEG4)
Image storage	Optional MMC or SD Card  , 1 GB maximum capacity (The SD logo is a trademark of the SD Card Association.)
Internal storage capacity	256 MB internal memory/185 MB available for image storage (1 MB equals one million bytes)
View	
Quickview	Yes
Video output	NTSC or PAL, via model AV-8 AV cable
Power	
Kodak Li-Ion rechargeable digital camera battery KLIC-5000 5V AC adapter, optional	
Communication with computer	
USB 2.0 full speed (PIMA 15740 protocol), via model U-8 USB cable, EasyShare camera dock, or EasyShare printer dock IEEE802.11b (Wi-Fi), via SD Wi-Fi card	
Other features	
Wireless capability of camera	Compliance: IEEE 802.11b (Wi-Fi), RCR STD-33, ARIB STD-T66 Transmission rate: 1/2/5.5/11Mbps (auto-detect) Frequency range: 2412-2462 MHz (1 - 11 channel ISM band) Access modes: Infrastructure, Ad Hoc Security: 64/128 bit WEP

EasyShare-One zoom digital camera specifications	
Wireless capability of optional Kodak Wi-Fi [®] card	Card type: SD Input/Output Card (SDIO; specification Ver 1.00 compliant) Compliance: IEEE 802.11b (Wi-Fi), RCR STD-33, ARIB STD-T66 Transmission rate: 1/2/5.5/11Mbps (auto-detect) Frequency range: 2412-2462 MHz (1 - 11 channel ISM band) Modulation Technique: Direct Sequence Spread Spectrum (CCK,DQPSK,DBPSK) Operation: 3.3 V via device Dimensions: 24 x 40 x 2.1 mm Device compatibility: Wi-Fi technology enabled Kodak EasyShare devices Software compatibility: Kodak EasyShare software version 5 or higher
PictBridge support	No
Self-timer	Selectable: up to 60 seconds (still); 5, 15, 30, or Max (video)
Sound feedback	Power up, shutter release, self-timer, error; on or off selectable.
White balance	Auto, Daylight, Tungsten, Fluorescent
Power save	Selectable LCD auto-dimmer, auto power off after 8 minutes
Color modes	Color, black & white, sepia
Sharpness modes	Sharp, standard, soft
Date stamp	None, YYYY/MM/DD, MM/DD/YYYY, DD/MM/YYYY
Tripod mount	1/4 in.
Operating temperature	32 to 104 °F (0 to 40 °C)
Size	4.1 in. (10.3 cm) x 1.0 in. (2.6 cm) x 2.5 in. (6.3 cm) @ power off
Weight	8 oz (225 g) without battery or card

Storage capacities

The numbers listed are approximate and can vary due to file size. Cards can contain other files. You may be able to store more or fewer pictures and videos.

Picture storage capacity

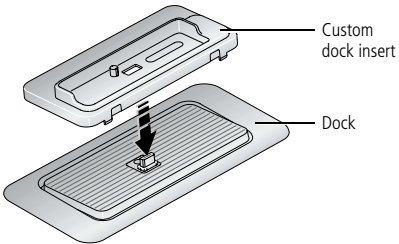
	Number of pictures			
	4.0 MP	3.5 MP (3:2)	2.1 MP	1.1 MP
256 MB Internal memory*	150	167	270	451
16 MB SD/MMC card	12	13	21	36
32 MB SD/MMC card	24	27	43	73
64 MB SD/MMC card	45	54	87	146
128 MB SD/MMC card	97	109	175	293
256 MB SD/MMC card	196	218	351	588

*Internal memory can store up to 1500 images, tagged as Favorites, optimized for viewing on the camera.

Video storage capacity

	Minutes/seconds of video
256 MB Internal memory	6 min.
16 MB SD/MMC card	30 sec.
32 MB SD/MMC card	1 min.
64 MB SD/MMC card	2 min.
128 MB SD/MMC card	4 min.
256 MB SD/MMC card	8 min., 10 sec.

Dock compatibility

Kodak EasyShare dock	Docking configuration
<ul style="list-style-type: none"> ■ printer dock plus series 3* ■ series 3 printer docks and camera docks 	 <p style="text-align: right;">Custom dock insert</p> <p style="text-align: right;">Dock</p>
<ul style="list-style-type: none"> ■ printer dock ■ printer dock plus ■ printer dock 6000 ■ camera dock 6000 ■ printer dock 4000 ■ camera dock II ■ LS420, LS443, LS755 camera dock 	<p>Not compatible</p>

NOTE: Your camera is also compatible with the Kodak EasyShare photo printer 500*, a non-docking, Wi-Fi enabled printer.

*Where available. Visit www.kodak.com/go/easyshare-oneaccessories.

Power-saving features

No action for	The camera	To turn the camera back on
5, 15, 20, 30 seconds (selectable)	Screen dims.	Press any button or touch the screen.
8 minutes	Enters auto power off.	Press the On/Off button.

Wireless channels

This product operates on the legal channel for your region. You are not able to manually select the channel. Wi-Fi networks operate in the ISM (Industrial, Scientific, and Medical) radio frequency band. The ISM band is divided into channels, each occupying 5MHz of frequency band. To join a wireless network, a node must set its channel to that of the wireless router (or - in a device-to-device network - to that of the first node).

Nearby networks that operate on the same channel will interfere with one another, resulting in lower network speed or connection loss.



CAUTION:

The Wi-Fi card for this device transmits at 15 dBm. In France, the power level is limited to 10 dBm in outdoor environments, per regulations. When in France, use the wireless functions of this product indoors only.

Important safety instructions

Using this product

- Read and follow these instructions before using Kodak products. Always follow basic safety procedures.
- Use only a USB-certified computer. Contact your computer manufacturer if you have questions.
- The use of an accessory attachment that is not recommended by Kodak, such as an AC adapter, may cause fire, electric shock, or injury.
- If using this product in an airplane, observe all instructions of the airline.



CAUTION:

Do not disassemble this product; there are no user-serviceable parts inside. Refer servicing to qualified service personnel. Do not expose this product to liquid, moisture, or extreme temperatures. Kodak AC adapters and battery chargers are intended for indoor use only. The use of controls, adjustments, or procedures other than those specified herein may result in exposure to shock and/or electrical or mechanical hazards. If the LCD breaks, do not touch the glass or liquid. Contact Kodak Support.

Battery safety and handling



CAUTION:

When removing batteries, allow them to cool first; batteries may be hot.

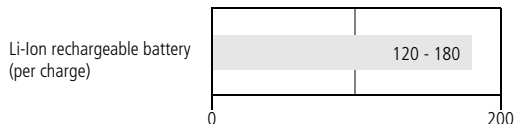
- Read and follow all warnings and instructions supplied by the battery manufacturer.
- Use only batteries approved for this product to avoid risk of explosion.
- Keep batteries out of the reach of children.

- Do not allow batteries to touch metal objects, including coins. Otherwise, a battery may short circuit, discharge energy, become hot, or leak.
- Do not disassemble, install backward, or expose batteries to liquid, moisture, fire, or extreme temperature.
- Replace all batteries of a set at the same time. Do not mix new batteries with used ones. Do not mix rechargeable and non-rechargeable batteries. Do not mix lithium, Ni-MH, and Ni-Cd batteries together. Do not mix batteries of different chemistry types, grades, or brands. Failure to observe this precaution may cause leakage.
- Remove batteries when the product is stored for an extended period of time. In the unlikely event that battery fluid leaks inside the product, contact your local Kodak Customer Service representative.
- In the unlikely event that battery fluid leaks onto your skin, wash immediately with water and contact your local health provider. For additional health-related information, contact your local Kodak Customer Service representative.
- Dispose of batteries according to local and national regulations.
- If the battery contacts touch metal objects, the battery may short-circuit, discharge energy, become hot, or leak.
- Do not charge non-rechargeable batteries.

For more information on batteries, see

www.kodak.com/global/en/service/batteries/batteryUsage.jhtml

Battery life



Battery life per CIPA testing method. (Approx. number of pictures in Auto mode, using 128 MB SD card.) Actual life may vary based on usage.

Use only a Kodak Li-Ion rechargeable digital camera battery KLIC-5000. Not all manufacturers' 3.7V Li-Ion rechargeable batteries are compatible with the camera. Damage caused by unauthorized accessories is not covered under warranty.

Extending battery life

- Reduce LCD dimmer setting.
- Limit excessive use of the flash.
- Limit excessive use of Wi-Fi functions
- Dirt on the battery contacts can affect battery life. Wipe the contacts with a clean, dry cloth before loading batteries in the camera.
- Battery performance is reduced at temperatures below 41°F (5°C). When using your camera in cold weather, carry spare batteries and keep them warm. Do not discard cold batteries that do not work; when they return to room temperature, they may be usable.

- Visit www.kodak.com/go/easyshare-oneaccessories for:

Kodak 5-volt AC adapter—powers your camera.

Kodak EasyShare camera dock series 3—powers your camera, transfers pictures and videos to your computer, and charges the Li-Ion battery included with your camera.

Kodak EasyShare printer dock (series 3 models)—powers your camera, makes 4 x 6 in. (10 x 15 cm) prints with or without a computer, transfers pictures and videos to your computer, and charges the included Li-Ion battery.

IMPORTANT: *Do not use the AC adapter included with the Kodak EasyShare camera dock or printer dock to power your camera.*

Upgrading your software and firmware

Download the latest versions of the software included on the Kodak EasyShare software CD and the camera firmware (the software that runs on the camera). See www.kodak.com/go/easyshare-onedownloads.

Additional care and maintenance

- If the camera has been subjected to inclement weather or you suspect water has gotten inside the camera, turn off the camera and remove the batteries and card. Allow all components to air-dry for at least 24 hours before using the camera again.
- Blow gently on the lens or screen to remove dust and dirt. Wipe gently with a soft, lint-free cloth or an untreated lens-cleaning tissue. Do not use cleaning solutions unless designed specifically for camera lenses. Do not allow chemicals, such as suntan lotion, to contact painted surfaces.
- Service agreements may be available in your country. Contact a dealer of Kodak products for more information.
- For digital camera disposal or recycling information, contact your local authorities. In the US, visit the Electronics Industry Alliance Web site at www.eiae.org or the Kodak Web site at www.kodak.com/go/easyshare-onesupport.

Warranty

Limited warranty

Kodak warrants the Kodak EasyShare-One zoom digital camera to be free from malfunctions and defects in both materials and workmanship for one year from the date of purchase.

Kodak warrants Kodak EasyShare-One zoom digital camera accessories (excluding batteries) to be free from malfunctions and defects in both materials and workmanship for one year from the date of purchase.

Retain the original dated sales receipt. Proof of the date of purchase will be required with any request for warranty repair.

Limited warranty coverage

This limited warranty will be honored only within the geographical location that Kodak EasyShare digital cameras and accessories were purchased.

Kodak will REPAIR or REPLACE Kodak EasyShare digital cameras and accessories if they fail to function properly during the warranty period, subject to any conditions and/or limitations stated herein. Such repair service will include all labor as well as any necessary adjustments and/or replacement parts. Such repair or replacement is the sole remedy under this warranty.

If replacement parts are used in making repairs, these parts may be remanufactured, or may contain remanufactured materials. If it is necessary to replace the entire product, it may be replaced with a remanufactured product.

Limitations

Request for Warranty service will not be accepted without proof of date of purchase, such as a copy of the original dated Kodak EasyShare digital camera or accessory sales receipt. (Always keep the original for your records.)

This warranty does not apply to the battery(s) used in digital cameras or accessories. This warranty does not cover circumstances beyond Kodak's control, nor problems

caused by failure to follow the operating instructions in the Kodak EasyShare digital cameras and accessories user's guides.

This warranty does not apply when failure is due to shipping damage, accident, alteration, modification, unauthorized service, misuse, abuse, use with incompatible accessories or attachments, failure to follow Kodak's operation, maintenance or repacking instructions, failure to use items supplied by Kodak (such as adapters and cables), or claims made after the duration of this warranty.

Kodak makes no other express or implied warranty for this product. In the event that the exclusion of any implied warranty is ineffective under the law, the duration of the implied warranty will be one year from the purchase date.

The option of replacement is Kodak's only obligation. Kodak will not be responsible for any special, consequential or incidental damages resulting from the sale, purchase, or use of this product, regardless of the cause. Liability for any special, consequential or incidental damages (including but not limited to loss of revenue or profit, downtime costs, loss of the use of the equipment, cost of substitute equipment, facilities or services, or claims of your customers for such damages resulting from the purchase, use or failure of the product), regardless of cause or for breach of any written or implied warranty is expressly disclaimed and excluded herefrom.

Your rights

Some states or jurisdictions do not allow exclusion or limitation of incidental or consequential damages, so the above limitation or exclusion may not apply to you. Some states or jurisdictions do not allow limitations on how long an implied warranty lasts, so the above limitation may not apply to you.

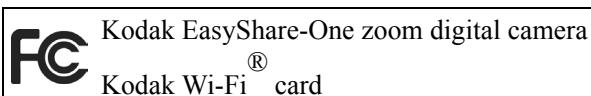
This warranty gives you specific rights, and you may have other rights which vary from state to state or by jurisdiction.

Outside the United States and Canada

In countries other than the United States and Canada, the terms and conditions of this warranty may be different. Unless specific Kodak warranty is communicated to the purchaser in writing by a Kodak company, no warranty or liability exists beyond any minimum requirements imposed by law, even though defect, damage, or loss may be by negligence or other act.

Regulatory compliance

FCC compliance and advisory



This equipment has been tested and found to comply with the limits for a Class B digital device, pursuant to Part 15 of the FCC Rules. These limits are designed to provide reasonable protection against harmful interference in a residential installation.

This equipment generates, uses, and can radiate radio frequency energy and, if not installed or used in accordance with the instructions, may cause harmful interference to radio communications. However, there is no guarantee that interference will not occur in a particular installation.

If this equipment does cause harmful interference to radio or television reception, which can be determined by turning the equipment off and on, the user is encouraged to try to correct the interference by one or more of the following measures: 1) reorient or relocate the receiving antenna; 2) increase the separation between the equipment and the receiver; 3) connect the equipment to an outlet on a circuit different from that to which the receiver is connected; 4) consult the dealer or an experienced radio/TV technician for additional suggestions.

Any changes or modifications not expressly approved by the party responsible for compliance could void the user's authority to operate the equipment. Where shielded interface cables have been provided with the product or specified additional components or accessories elsewhere defined to be used with the installation of the product, they must be used in order to ensure compliance with FCC regulation.

**CAUTION:**

When using the Wi-Fi card with a printer dock: This equipment should be installed and operated with a minimum distance of 7.9 inches (20 cm) for 2.4 GHz operations between the radiator and your body. This transmitter must not be collocated or operate in conjunction with any other antenna or transmitter.

SAR statement (when using with Wi-Fi card)

The available scientific evidence does not show that any health problems are associated with using low power wireless devices. There is no proof, however, that these low power wireless devices are absolutely safe. Low power wireless devices emit low levels of radio frequency energy (RF) in the microwave range while being used. Whereas high levels of RF can produce health effects (by heating tissue), exposure to low-level RF that does not produce heating effects causes no known adverse health effects. Many studies of low-level RF exposures have not found any biological effects. Some studies have suggested that some biological effects might occur, but such findings have not been confirmed by additional research. Kodak Wi-Fi[®] card (3F8508) has been tested and found to comply with FCC radiation exposure limits set forth for an uncontrolled equipment and meets the FCC radio frequency (RF) Exposure Guidelines in Supplement C to OET65. The maximum SAR levels tested for Kodak Wi-Fi[®] card (3F8508) have been shown to be 0.616 W/kg at Body.

FCC and Industry Canada

This device complies with Industry Canada RSS-210 and FCC Rules. Operation is subject to the following two conditions: (1) this device may not cause harmful interference, and (2) this device must accept any interference received, including interference that may cause undesired operation.

Canadian DOC statement

DOC Class B Compliance—This Class B digital apparatus complies with Canadian ICES-003.

Observation des normes-Class B—Cet appareil numérique de la classe B est conforme à la norme NMB-003 du Canada.

CE

Hereby, Eastman Kodak Company declares that this Kodak Wi-Fi® card is in compliance with the essential requirements and other relevant provisions of Directive 1999/5/EC.

Waste Electrical and Electronic Equipment labeling



In the European Union, do not discard the product as unsorted municipal waste. Contact your local authorities or go to www.kodak.com/go/recycle for recycling program information.

Class B ITE

이 기기는 가정용으로 전자파적합등록을 한 기기로서 주거지역에서는 물론 모든 지역에서 사용할 수 있습니다.

VCCI Class B ITE

この装置は、情報処理装置等電波障害自主規制協議会（VCCI）の基準に基づくクラスB 情報技術装置です。この装置は、家庭環境で使用することを目的としていますが、この装置がラジオやテレビジョン受信機に近接して使用されると、受信障害を引き起こすことがあります。
取扱説明書に従って正しい取り扱いをして下さい。

English translation:

This is a Class B product based on the standard of the Voluntary Control Council for Interference from Information Technology Equipment (VCCI). If this is used near a radio or television receiver in a domestic environment, it may cause radio interference. Install and use the equipment according to the instruction manual.

MPEG-4

Use of this product in any manner that complies with the MPEG-4 visual standard is prohibited, except for use by a consumer engaging in personal and non-commercial activities.

Index

Numerics

4-way controller, ii, 5

A

A/V cable

connection to television, 66

connector on camera, i

about, camera information, 37

AC adapter

DC-in connector, i

specifications, 86

accessories, purchasing, 81

ad hoc network, overview, 42

address book

creating, 59

group lists, 59

synchronizing, 51

AF framing brackets, 12

albums

adding pictures & videos to, 20

creating, 20, 21

deleting, 26

editing, 21

emailing, wireless on

EASYSHARE Gallery, 64

pre-assigning pictures & videos
to, 33

removing pictures & videos from, 21

renaming, 21

synchronizing, 51

viewing pictures & videos in, 17

auto

flash, 16

focus, continuous AF, 35

focus, video AF, 36

power off, 4, 90

scene mode, 27

touchscreen dimming, 4, 36, 90

B

back button, ii, 5

backlight scene mode, 28

battery

charging, 2

expected life, 93

extending life, 93

loading, 3

release switch, ii

removing, 3

safety, 91

slot, ii, 3

beach scene mode, 28

black & white pictures, 34

brackets, framing, 12

burst, 29

button

4-way controller, ii, 5

back, ii, 5

capture/view switch, ii, 12, 13,
17, 18

delete, ii, 13, 26

flash, i, 15

info, ii, 5, 19, 21, 25
menu, ii
OK, ii
on/off, i, 4
share, ii, 13, 57
shutter, i, 12, 13
zoom, ii, 14, 15, 19, 25

C

calendar (viewing by date), 17
calibrating touchscreen, 7, 36
camera screen. *See* touchscreen
Canadian DOC statement, 99
captions
 adding to pictures & videos, 25
 editing, 25
capture specifications, 85
capture/view switch, ii, 12, 13
card
 SD/MMC, inserting, 11
 slot, SD/MMC, ii, 11
 slot, Wi-Fi, i, 43
 storage capacities, SD/MMC, 88
 Wi-Fi, inserting, 43
card print order, 71
care & maintenance, camera, 94
CCD specifications, 84
CE, 99
channels, wireless regulations, 90
charging battery, 2
children scene mode, 28
Class B ITE, 99
cleaning
 lens, 94
 touchscreen, 94

clock, setting, 8, 36
close-up scene mode, 28
closing
 drawer, 24
 touchscreen display, 4
color mode, 34
computer
 communication specifications, 86
 connecting to, 54
 emailing pictures from, 66
 installing software on, 52
 printing pictures from, 67
 uploading to EASYSHARE Gallery
 from, 68
 USB transfer to, 54
 viewing pictures on
 EASYSHARE Gallery with, 68
 wireless transfer to, 55
connecting
 A/V cable to television, 66
 to wireless network, 44
 USB cable to computer, 54
connector
 A/V out, i, 66
 DC-in, i
 dock, ii
 USB, i
continuous AF, 35
copying pictures & videos, 26
cover, lens, i
cropping pictures, 25
customer support, 82

D

- date & time
 - date stamp, 34
 - setting, 8, 36
 - synchronizing, 51
- DC-in connector for AC adapter, i
- delete button, ii, 13, 26
- deleting
 - albums, 26
 - pictures & videos, 26
- deleting pictures & videos
 - during quickview, 13
 - from albums, 21
 - from drawer, 24
 - from outbox, 72
- device settings, 36
- device-to-device network, overview, 42
- digital zoom, 15
- display. *See* touchscreen
- disposal, recycling, 94
- dock connector, ii
- dock *See* printer dock
- DPOF (print order), creating, 71
- drawer
 - closing, 24
 - opening, 23
 - placing pictures & videos in, 23
 - removing pictures & videos from, 24
 - viewing pictures & videos in, 23

E

- EASYSHARE Gallery
 - setting account information on camera, 9, 10
 - setting domain, 61
 - uploading pictures from computer, 68
 - viewing with computer, 68
 - wireless uploading, 62
 - wireless viewing, 17, 63
- EasyShare software *See* software
- editing
 - albums, 21
 - captions, 25
 - cropping pictures, 25
- emailing
 - EASYSHARE Gallery albums, 64
 - from computer, 66
 - from outbox, 69
 - wireless, 58
- exposure
 - compensation, 30
 - metering, 35
 - specifications, 85

F

- favorites, tagging, 22
- FCC
 - and Industry Canada, 99
 - compliance and advisory, 97
- fill flash, 16

fireworks scene mode, 28
firmware, upgrading, 94
first burst, 29
flash, i
 auto, 16
 button, i, 15
 fill, 16
 range, 15
 red-eye, 16, 34
 specifications, 85
flower scene mode, 28
focus
 automatic, 12
 continuous AF, 35
 video AF, 36
focus zone, 35
format
 card, 37
 internal memory, 37
framing brackets, 12
friends' albums, viewing, 17, 63

G
glossary, wireless, 48
groups, creating lists, 59

H
heart icon. See favorites
help
 troubleshooting, 73
 web links, 81

I
info button, ii, 5, 19, 21, 25
information
 about camera, 37
 button. See info button
infrastructure network, overview, 41
installing
 battery, 3
 SD/MMC card, 11
 software, 52
 Wi-Fi card, 43
internal memory
 copying to, 26
 storage capacity, 88
 viewing pictures in, 17
internet requirements for wireless
 features, 43
ISO, 34

K
keyboard, touch, 6
KODAK EASYSHARE Gallery
 See EASYSHARE Gallery
Kodak EasyShare software. See software
Kodak web sites, 81
Kodak Wi-Fi card. See wireless

L
landscape scene mode, 28
language, setting, 6, 36
last burst, 29
LCD (liquid crystal display).
 See touchscreen

LCD backlight timer, 36
lens, i
 cleaning, 94
 specifications, 84
light
 battery charger, 2
 on/off, i
 self-timer, i
 wireless network status, i, 47
light sensor, i
loading
 battery, 3
 SD/MMC card, 11
 software, 52
 Wi-Fi card, 43

M
Macintosh OS, installing software on, 52
magnifying pictures, 19
maintenance, camera, 94
memory
 formatting, 37
 internal, copying to, 26
 storage capacities, 88
memory card *See* SD/MMC card
menu
 button, ii
 share, 57
 view, 17
microphone, i
MMC card *See* SD/MMC card
MPEG-4, 100
museum/polite scene mode, 28

N
navigation, 5
network. *See* wireless
night landscape scene mode, 28
night portrait scene mode, 28
NTSC, video setting, 37

O
OK button, ii
on/off button, i, 4
opening
 battery/card door, 3, 11
 drawer, 23
 touchscreen display, 4
optical zoom, 14
orientation sensor, 37
outbox
 card print order, 71
 emailing from, 69
 printing pictures from, 70
 removing pictures from, 72
 viewing pictures in, 17, 69

P
PAL, video setting, 37
party scene mode, 28
pausing video, 18
people, creating address book for, 59
picture quality, troubleshooting, 75
picture size, 33

- pictures
 - adding captions to, 25
 - adding to albums, 20
 - copying, 26
 - cropping, 25
 - deleting, 26
 - emailing from computer, 66
 - emailing, wireless, 58
 - locating, 17, 18
 - magnifying, 19
 - organizing, 20
 - printing from computer, 67
 - printing from SD/MMC card, 67
 - printing via dock connection, 67
 - removing from albums, 21
 - selecting, 18
 - selecting multiple, 23
 - sharing, 57
 - storage capacities, 88
 - tagging as favorites, 22
 - tagging during quickview, 13
 - taking See picture-taking
 - uploading to EASYSHARE Gallery
 - from computer, 68
 - viewing, 13, 17
 - viewing information, 19
 - viewing on EASYSHARE Gallery from computer, 68
 - viewing on television, 66
 - wireless printing of, 60, 67
 - wireless uploading to EASYSHARE Gallery, 62
 - wireless viewing on EASYSHARE Gallery, 63
- picture-taking, 34
 - burst, 29
 - capture icons, 14
 - capture settings, 33
 - exposure compensation, 30
 - flash, 15, 16
 - overhead shots, 32
 - pre-assigning to an album, 33
 - scene modes, 27
 - self-timer, 31
 - tagging during quickview, 13
 - videos, 13
 - zoom, 14, 15
- portrait scene mode, 27
- power
 - auto off, 4, 90
 - button, i, 4
 - specifications, 86
 - turning camera on & off, 4
- preferences, setting, 38
- printer dock
 - dock compatibility, 89
 - docking & printing, 67
 - troubleshooting, 80
- printing
 - creating a print order, 71
 - from computer, 67
 - from SD/MMC card, 67
 - pictures from outbox, 70
 - quick print, 67
 - tagged pictures, 67
 - via dock connection, 67
 - wireless, 60

Q

quick print, 67
quickview, 13

R

range, flash, 15
recent pictures & videos, viewing, 17
recycling, disposal, 94
red-eye flash, 16, 34
regulatory information
 Canadian DOC statement, 99
 CE, 99
 Class B ITE, 99
 FCC and Industry Canada, 99
 FCC compliance and advisory, 97
 MPEG-4, 100
 SAR statement, 98
 VCCI Class B ITE, 100
 Waste Electrical and Electronic
 Equipment labeling, 99
 wireless channels, 90
resolution (picture size), 33
resolution (picture size) setting, 88

S

safety
 battery, 91
 product, 91
SAR statement, 98
scene modes, 27
screen, camera. *See* touchscreen
SD/MMC card
 copying to, 26
 creating print order on, 71
 inserting, 11

 printing from, 67
 removing, 11
 slot, ii, 11
 viewing pictures on, 17
selecting
 multiple pictures & videos, 23
 pictures & videos, 18
self-portrait scene mode, 28
self-timer, 31
 light, i
sensor, light, i
sepia pictures, 34
sepia, black & white pictures, 34
service and support telephone
 numbers, 82
setting
 burst, 29
 camera sounds volume, 37
 capture options, 33
 color mode, 34
 continuous AF, 35
 date & time, 8, 36
 date stamp, 34
 device options, 36
 EASYSHARE Gallery account
 information, 9, 10
 EASYSHARE Gallery domain, 61
 exposure compensation, 30
 exposure metering, 35
 flash, 15
 focus zone, 35
 ISO, 34
 language, 6, 36
 LCD backlight timer, 36
 orientation sensor, 37

- picture size, 33
- preferences, 38
- red-eye option, 34
- scene modes, 27
- self-timer, 31
- sharpness, 35
- slide show interval, 36
- sound theme, 37
- sync & transfer options, 53
- video AF, 36
- video out, 37
- video playback volume, 18
- video zoom, 36
- white balance, 34
- wireless network profile, 46
- setup options
 - capture, 33
 - device, 36
 - groups, 59
 - people, 59
 - preferences, 38
 - wireless, 46
- share
 - button, ii, 13, 57
 - menu, 57
- sharing pictures & videos, 57
 - emailing EASYSHARE Gallery
 - albums, 64
 - emailing from computer, 66
 - printing from computer, 67
 - printing from SD/MMC card, 67
 - printing via dock connection, 67
 - uploading to EASYSHARE Gallery
 - from computer, 68
 - viewing EASYSHARE Gallery with
 - computer, 68
 - viewing on television, 66
 - wireless emailing, 58
 - wireless printing, 60, 67
 - wireless uploading to
 - EASYSHARE Gallery, 62
 - wireless viewing on
 - EASYSHARE Gallery, 63
- sharpness, 35
- shutter
 - burst, 29
 - button, i, 12, 13, 29, 31
 - self-timer, 31
- sleep mode, 90
- slide show
 - interval, 36
 - of images on camera, 65
 - of images on
 - EASYSHARE Gallery, 63
- slot
 - battery, ii, 3
 - SD/MMC card, ii, 11
 - Wi-Fi card, i, 43
- snow scene mode, 28
- socket, tripod, ii
- software
 - installing, 52
 - synchronizing with
 - camera, 51, 54, 56
 - upgrading, 94
- sound
 - themes, 37
 - volume, camera, 37
 - volume, video, 18

speaker, i
specifications
 battery, 93
 capture, 85
 CCD, 84
 computer communication, 86
 exposure, 85
 flash, 85
 lens, 84
 other features, 86
 power, 86
 touchscreen, 84
 view, 86
sports scene mode, 27
storage
 capacities, 88
 copying pictures & videos, 26
 viewing by location on camera, 17
strap See wrist strap
stylus, for touchscreen, ii, 5
support, technical, 82
switch
 battery release, ii
 capture/view, ii, 12, 13, 17, 18
sync & transfer settings, 53
synchronize option, 56
synchronizing with software, 51
 troubleshooting, 79
 via USB, 54
 wireless, 56

T
tagging
 as favorite, 22
 for email, 13
 for print, 13
telephone support, 82
telephoto
 flash range, 15
 zoom, 14
television, viewing pictures & videos
 on, 66
text scene mode, 28
time & date See date & time
timer, self, 31
touch keyboard, using, 6
touchscreen, ii, 4
 auto dimming, 4, 36
 calibrating, 7, 36
 cleaning, 94
 rotating display, 4, 32
 specifications, 84
 touch keyboard, 6
 using, 5, 6
transferring pictures & videos, 51
 troubleshooting, 79
 via USB, 54
 wireless, 55
tripod socket, ii
troubleshooting
 camera, 73
 picture quality, 75
 printer dock, 80
 synchronization & transfer, 79
 wireless network connection, 77

U

- upgrading software, firmware, 94
- uploading to EASYSHARE Gallery
 - from computer, 68
 - wireless, 62
- USB (universal serial bus) cable
 - connecting, 54
 - connector on camera, i, 54

V

- VCCI Class B ITE, 100
- video AF, 36
- video out, 37
- video zoom, 36
- videos
 - adding captions to, 25
 - adding to albums, 20
 - copying, 26
 - deleting, 26
 - locating, 17, 18
 - organizing, 20
 - playback volume, 18
 - playing, 13, 18
 - recording, 13
 - removing from albums, 21
 - selecting, 18
 - selecting multiple, 23
 - sharing, 57
 - storage capacities, 88
 - tagging as favorites, 22
 - tagging during quickview, 13
 - viewing information, 19
 - viewing on television, 66

view

- menu, 17
- specifications, 86
- switch, ii, 17, 18
- viewing pictures & videos
 - after taking, 17
 - as you take them, 13
 - by album, 17
 - by date, 17
 - by storage location, 17
 - captions, 25
 - full-screen, 18
 - in drawer, 23
 - in outbox, 17, 69
 - magnifying pictures, 19
 - on EASYSHARE Gallery, 17, 63, 68
 - on television, 66
 - recent, 17
 - scrolling, 18
 - slide show of images on camera, 65
 - slide show of images on EASYSHARE Gallery, 63
- volume
 - camera sounds, 37
 - video playback, 18

W

- warranty, 95
- Waste Electrical and Electronic Equipment labeling, 99
- web links, Kodak, 81
- white balance, 34
- wide angle
 - flash range, 15
 - zoom, 14

Wi-Fi See wireless
Windows OS, installing software on, 52
wireless
 emailing, 58, 64
 features on camera, overview, 40
 glossary of terms, 48
 internet requirements for camera, 43
 network profile setup, 46
 network status light, i, 47
 network status light, key, 47
 network, choosing, 46
 network, connecting to, 44
 network, device-to-device
 (ad hoc), 42
 network, infrastructure, 41
 network, overview, 39
 network, troubleshooting, 77
 network, types, 41
 printing, 60
 quick print, 67
 synchronization, 56
 synchronization & transfer, 55
 uploading to EASYSHARE Gallery, 62
 using camera with Wi-Fi network, 39
 viewing of EASYSHARE Gallery,
 17, 63
 Wi-Fi card slot, i, 43
 Wi-Fi card, deploying, 43
 Wi-Fi card, inserting, 43
 Wi-Fi card, removing, 43
wrist strap
 attaching, 2
 mount, ii

Z

zoom
 button, ii, 14, 15, 19, 25
 digital, 15
 magnify picture, 19
 optical, 14
 video, 36