

Rio 800 User Guide

About the User Guide

The Rio 800 User Guide includes the following information:

[Introduction](#)

[Using your Rio](#)

[Using Rio menu options and settings](#)

[Using the Rio software](#)

[Understanding digital audio terms](#)

[Common questions about the Rio 800](#)

[Warranty](#)

[Regulatory information](#)

[Customer care](#)

[Index](#)

To learn more:

- Refer to the Getting Started Guide for the basics on how to set up and start using your Rio.
- Click on the Rio Audio Manager, AudibleManager, or SoundJam software Help menus for detailed step-by-step instructions on how to use the software to convert CD tracks into compressed digital audio formats, get audio from the Internet, or transfer tracks to and from the Rio.
- Visit the [Rio Web site](#)

Navigating and printing the Rio 800 User Guide

The User Guide is in Adobe Acrobat (.PDF) file format.

Important: We strongly recommend that you use Adobe Acrobat Reader version 4.0—available on the Rio software CD-ROM—to view and print the Rio User Guide.

Click on [links](#) (blue underlined text) to jump to another location in the document or to a location on the World Wide Web.



Click on the Index icon at the top of any page (by the page number) to go to the index—or you can click on the Index bookmark. Click on page numbers in the index to jump to a topic.

Using Acrobat toolbar icons



Click on the Show/Hide Navigation Pane icon in the Acrobat toolbar to show a list of bookmarks. Bookmarks are links to the contents of the User Guide. Click on any bookmark in the list to jump to the page in the User Guide that contains the topic.



Click on the Print icon in the Acrobat toolbar to print the User Guide. The size of the User Guide is optimised for printing.

Legal notices

Copyright © 2000-2001 SONICblue, Incorporated. All Rights Reserved.

SONICblue, Incorporated does not assume any responsibility for errors or omissions in this document or make any commitment to update the information contained herein.

Rio® is a registered trademark of RioPort, Inc. in the United States and/or other countries and is used under licence.

Microsoft, Windows Media and the Windows Logo are trademarks or registered trademarks of Microsoft Corporation in the United States and/or other countries.



All other product names may be trademarks of the companies with which they are associated.

Second Edition, February 2001.

Part Number 75550162-001

Introduction

The Rio 800 provides ultimate access to your favourite music or spoken audio while you exercise, commute, or relax. Create and mix your favourite musical selections on your PC or Mac for playback on the Rio. It's like virtual reality for your ears. Your Rio is similar in function to a portable cassette or CD player. However, it has no moving parts, so the Rio does not skip or jitter during playback. The rechargeable battery, and voice recording option make the Rio 800 the ultimate digital audio player.

The Rio comes with 64 MB of built-in memory. You can further expand the Rio memory storage with accessory backpacks. There are many cool accessories you can purchase separately to customise your Rio. Visit the [Rio Web site](#) for information about accessories or to place an order online.

The Rio interfaces with your computer through the USB port. Use the software included on the CD-ROM to:

- Create your own custom song mixes to take with you on your Rio.
- Create compressed digital audio tracks from your audio CDs using your computer's CD-ROM drive.
- Create a custom CD-ROM.
- Convert and organise the contents of your CD collection into compressed digital audio tracks.
- Download digital audio files from the Internet to the Rio via your computer.

There are many sources of digital audio content on the Internet, including:

Rioport.com

WindowsMedia.com

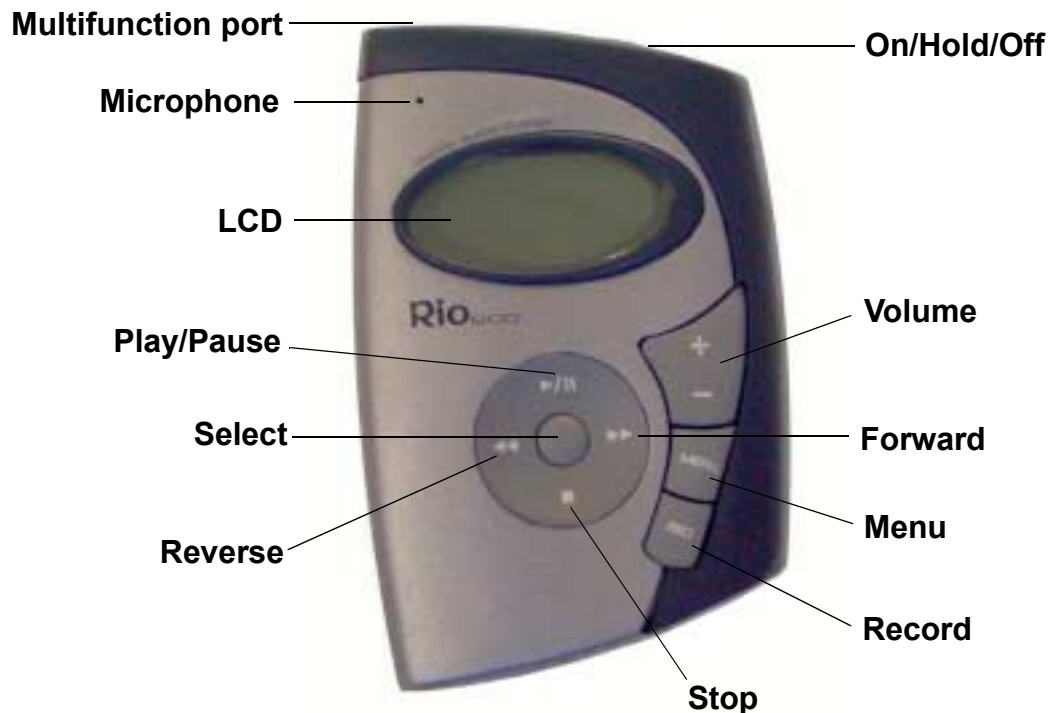
Audible.com—for spoken audio

Using your Rio

This section explains what you need to know about:

[Using Rio buttons and controls](#)

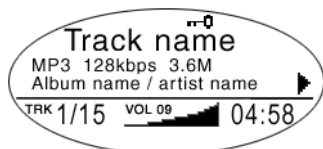
[Using the rechargeable backpack](#)



Using Rio buttons and controls

- **Select:** The Centre Rio joypad button. In menu mode, press **Select** to choose a menu or dialogue option.
- **>/||:** Play/Pause; the top button on the joypad. In play mode, press **>/||** once to play a track; press it again to pause. When paused, the play/pause icon appears as two blinking vertical bars on the LCD. If your Rio is left in Pause mode for an extended period of time, it goes into sleep mode to conserve battery life. Press **>/||** to wake your Rio from sleep mode. In menu mode, press **>/||** to navigate up through menu options.
- **■:** Stop; the bottom button on the joypad. In play mode, press **■** to stop playing the current track. Press and hold **■** for about two seconds to put your Rio into sleep mode to conserve battery life. In menu mode, press **■** to navigate down through menu options.
- **>>:** Forward; the right button on the joypad. In play mode, press and release **>>** to skip to the next track on your Rio. Press and hold **>>** to fast-forward through the track currently playing. In menu mode, press **>>** to navigate through menu options.
- **<<:** Reverse; the left button on the joypad. In play mode, press and release **<<** to skip to the beginning of the track currently playing on your Rio. Press and hold **<<** to fast-rewind through the current track. In menu mode, press **<<** to navigate through menu options.

- **Menu:** Press the **Menu** button to display the Rio menu options. Press **>/||**, **>>**, **<<**, and **■** to navigate through menu options. Press **Select** to choose a menu option. Generally, pressing **Menu** while in menu mode before saving any changes returns the Rio to play mode without saving.
- **Rec:** The Record button on the Rio. Press **Rec** to display the Recorder options menu, where you can choose to record your voice or play a recording. See the section on [Recording and Playing Voice](#) for instructions and more information.
- **Liquid Crystal Display (LCD):** In play mode, the LCD provides the following information—clockwise from right:



- **Play/Pause icon:** Displays either a **Play** icon (triangle) or a **Pause** icon (two vertical bars), to show the current action of the Rio.
- **Current song position:** Displays the play location in the current track in minutes:seconds (mm:ss) form. For Audible content, the display includes hours (hh:mm or hh:mm:ss).
- **Volume level:** Displays the volume setting in both digital and graphic form. The bar-graph disappears as volume is reduced and re-appears as volume is increased. Volume level ranges from 0-20.
- **Track display:** Displays the number of the currently selected track and the total number of tracks on your Rio. Tracks are numbered from 1-99. If a playlist is active, the track count shows the number of tracks in it. If a large storage device is used, the total content is organised by playlists of up to 99 tracks.
- **Album name/artist name:** Album name is displayed in this field for a few seconds, followed by artist name. If the name is longer than the width of the display, the name scrolls.
- **Track information:** Track information includes the codec type (MP3, WMA, and so on), the bit rate (XXX kbps), and the file size (XX:XX MB).
- **Song name:** Displays the title of the currently selected track. Song name scrolls if the name is longer than the width of the display.
- **Hold icon (key):** Appears if the Rio is set to Hold mode. Hold locks all settings except the **Power** switch on the Rio.

Using the rechargeable backpack

The first time you charge the battery backpack, it is important to calibrate it and give it a full charge overnight or until the calibration timer expires. Calibrating the battery ensures accurate battery level display. You do not need to charge the battery before you calibrate it.

Note: You do not have to calibrate the battery each time you charge it—only the first time.

See the section on [Battery Calibration](#) for instructions and more information.

For subsequent chargings you can charge the backpack until the charge indicator goes off for a quick charge—after about 1.5 hours—or leave the AC adapter attached for about 2.5 hours for a full charge. Full charge allows you to play music for about 10 hours.

You can leave the backpack plugged into the AC adapter after charging is complete to maintain the charge. In addition, you can use your Rio to play music while the backpack is charging.

Warning: Do not remove the rechargeable battery from the backpack. Batteries may explode or leak if disposed of in fire, inserted backwards or disassembled.

Using menu options and settings

When the **Menu** button is pressed, the LCD displays Rio menu options:



- [Audio](#): Preset and custom equaliser settings.
- [Player](#): Random and repeat play options, delete track, and playlist functions.
- [Prefs](#): Player settings including power saving (time to sleep), LCD display backlight and contrast, time and date, and battery level and calibration.
- [About](#): Miscellaneous player status information including firmware version, internal and external memory used, battery level, calendar, and codec information.
- [Record](#): Voice recording and playback options.

Using Audio functions

Audio functions include built-in and custom equaliser (EQ) settings. Custom EQ lets you set the Treble and Bass values from 1 (low) to 9 (high).

Selecting built-in EQ settings

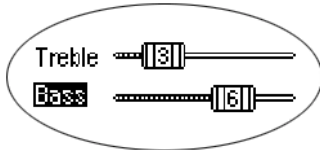
- 1 Press **Menu**.
- 2 Press the << or >> joypad buttons to navigate to **Audio**.
- 3 Press **Select**.
- 4 The EQ settings are displayed.



- 5 Press the >/||, ■, << or >> joypad buttons to highlight the desired setting.
 - To save the setting, press **Select**.
 - To return to play mode without saving any changes, press **Menu**.

Setting the Custom EQ

- 1 Press **Menu**.
- 2 Press the << or >> joypad buttons to navigate to **Audio**.
- 3 Press **Select**.
- 4 The EQ settings are displayed.
- 5 Press the >/||, ■, << or >> joypad buttons to navigate to **Custom**.
- 6 Press **Select**.



- 7 Press the >/|| or ■ joypad buttons to toggle between **Bass** and **Treble**.
- 8 Use the << or >> joypad buttons to increase or decrease the **Bass** or **Treble** value from 1 (low) to 9 (high).
 - To save the settings, press **Select**.
 - To return to play mode without saving any changes, press **Menu**.

Using Player functions

Player functions include:

- [Play options](#): Repeat or randomise tracks.
- [Delete tracks](#): Remove content from the Rio.
- [Playlist](#): Select playlists, create new playlists, manage playlists downloaded from your computer or remove playlists from the Rio.

Setting Repeat and Random play options

- 1 Press **Menu**.
- 2 Press the << or >> joypad buttons to navigate to **Player**.
- 3 Press **Select**.
- 4 Navigate to **Play Options**.
- 5 Press **Select**.
- 6 Press the >/|| or ■ joypad buttons to toggle between **Repeat** or **Random**.
- 7 Press the << or >> joypad buttons to change the **Repeat** or **Random** setting.

Repeat settings include:

- **All**: All tracks repeat.
- **Track**: Current track repeats.
- **Off**: Turns off repeat function.

Random settings include:

- **On**: All tracks play in random order.
- **Off**: Turns off random function.

- 8 Press **Select** to save the settings. To return to play mode without saving any changes, press **Menu**.

Deleting tracks from the Rio

- 1 Press **Menu**.
- 2 Press the << or >> joypad buttons to navigate to **Player**.
- 3 Press **Select**.
- 4 Press the joypad buttons to navigate to **Delete Tracks**.
- 5 Press **Select**. A list of all tracks is displayed.



- 6 Press the >|| or ■ joypad buttons to navigate to the track you want to delete.
- 7 Press **Select**.
 - Highlight **Yes** on the Delete dialogue, then press **Select** to delete the track.
 - Highlight **No** on the Delete dialogue, then press **Select** to return to the track list without deleting the track.
 - To return to play mode without saving any changes, press **Menu**.

Working with Playlists

Playlist options include:

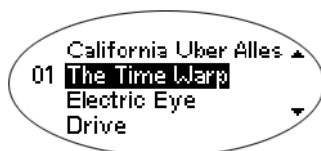
- **Choose:** Select a playlist from playlists stored on the Rio.
 - **New:** Build a new playlist.
 - **Edit:** Modify an existing playlist.
 - **Remove:** Remove a playlist from the Rio.
- 1 Press **Menu**.
 - 2 Press the << or >> joypad buttons to navigate to **Player**.
 - 3 Press **Select**.
 - 4 Navigate to **Playlist**.
 - 5 Press **Select**.
 - 6 Press the <<, >>, >|| or ■ joypad buttons to highlight **Choose**, **New**, **Edit** or **Remove** playlist options.
 - 7 Press **Select**.

Choosing a playlist

- 1 Select the **Choose** playlist option. Any existing playlists are displayed.
- 2 Press the >|| or ■ joypad buttons to highlight the desired playlist.
- 3 Press **Select**.

Building a playlist

- 1 Select the **New** playlist option. New playlists are numbered in sequential order starting at "01".
- 2 The playlist editor displays all tracks on the Rio.



- 3 Press the >|| or ■ joypad buttons to highlight a track.
 - Press **Select** to assign a playlist order number to the track. The number indicates the order in which the track is played in the playlist.
 - Press the << or >> joypad buttons to change the track order number.
- 4 When you have finished, highlight **-done editing-** at the bottom of the playlist editor, then press **Select** to save the new playlist and exit to the playlist options menu.

Modifying a playlist

- 1 Select the **Edit** playlist option.
- 2 Press the **>/||** or **■** joypad buttons to navigate to the playlist.
- 3 Press **Select**.
- 4 The playlist editor displays tracks and their playlist order numbers in the left column.
 - To add or remove tracks from the playlist, highlight a track and press **Select** to tag or untag the track with a number in the left column. This number indicates the order in which the track is played in the playlist.
 - To change the track order number in the playlist, highlight a track and press the **<<** or **>>** joypad buttons.
- 5 When you have finished, highlight **-done editing-** at the bottom of the playlist editor, then press **Select** to save the new playlist and exit to the playlist options menu.

Removing a playlist

- 1 Select the **Remove** playlist option.
- 2 Press the **>/||** or **■** joypad buttons to highlight the playlist you want to delete.
- 3 Press **Select**.
 - Highlight **Yes** on the Delete dialogue again, then press **Select** to delete the playlist.
 - Highlight **No** on the Delete dialogue, then press **Select** to exit without saving any changes.
 - To return to play mode without saving any changes, press **Menu**.

Setting Preferences

Preferences include these Rio settings:

- [Power saving](#) (time to sleep).
- [Display backlight and contrast](#).
- [Time and date](#).
- [Battery level display and calibration](#).

Adjusting the power saving setting

You can adjust the time to sleep (suspend) setting from one to nine minutes. To turn off the power saving feature, set the time to sleep setting to 0 (zero).

- 1 Press **Menu**.
- 2 Press the << or >> joypad buttons to navigate to **Prefs**.
- 3 Press **Select**.
- 4 Press the joypad buttons to navigate to **Power Saving**.
- 5 Press **Select**.



- 6 Press the << or >> joypad buttons to adjust the power saving setting.
 - To save the setting, press **Select**.
 - To return to play mode without saving any changes, press **Menu**.

Adjusting LCD display backlight and contrast

- 1 Press **Menu**.
- 2 Press the << or >> joypad buttons to navigate to **Prefs**.
- 3 Press **Select**.
- 4 Press the joypad buttons to navigate to **Display**.
- 5 Press **Select**.



- 6 Press the >/|| or ■ joypad buttons to toggle between **Backlight** and **Contrast**.
- 7 Press the << or >> joypad buttons to adjust the **Backlight** or **Contrast** setting.

Backlight settings include:

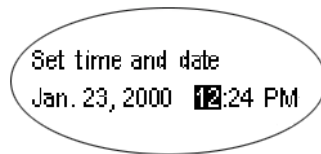
- Timed 1, 2, 5, or 10 seconds.
- Always on or Always off.

Contrast settings range from 1 (minimum) to 9 (maximum).

- 8 Press **Select** to save the settings.

Setting time and date

- 1 Press **Menu**.
- 2 Press the << or >> joypad buttons to navigate to **Prefs**.
- 3 Press **Select**.
- 4 Press the joypad buttons to navigate to **Time/Date**.
- 5 Press **Select**.



- 6 Press the << or >> joypad buttons to highlight each of the time and date fields.
- 7 Press the >|| or ■ joypad buttons when any of the time or date fields is highlighted to change the value. The date field will not roll to a value that is not valid for the selected month and year.
- 8 Press **Select** to save the time/date settings. To return to play mode without saving any changes, press **Menu**.

Displaying battery information

- 1 Press **Menu**.
- 2 Press the << or >> joypad buttons to navigate to **Prefs**.
- 3 Press **Select**.
- 4 Press the joypad buttons to navigate to **Battery**.
- 5 Press **Select**.
- 6 Press the joypad buttons to navigate to **Power level**.
- 7 Press **Select** to display battery information:



- Battery type: Rechargeable or Normal.
 - Battery charge level: The battery's charge state (percentage).
 - Run time estimation: The battery's remaining play time.
 - Battery level graphic: A bar graph inside a battery icon displays the approximate remaining charge.
- 8 Press **Menu** to return to play mode.

Calibrating the battery

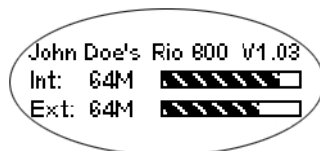
Calibrating the battery ensures accurate battery level display. It is important to calibrate the battery backpack and give it a full charge overnight or until the calibration timer expires the first time you charge it. You do not need to charge the battery before you calibrate it.



Note: You do not have to calibrate the battery each time you charge it—only the first time.

- 1 Connect the AC adapter into your Rio's backpack port at the bottom of the backpack.
- 2 Plug the AC adapter power lead into a socket. The charge indicator on the backpack comes on when charging begins.
- 3 Slide the Rio power switch to **On**.
- 4 Press **Menu**.
- 5 Press the << or >> joypad buttons to navigate to **Prefs**.
- 6 Press **Select**.
- 7 Press the joypad buttons to navigate to **Battery**.
- 8 Press **Select**.
- 9 Press the joypad buttons to navigate to **Calibrate**.
- 10 Press **Select**.
- 11 Wait overnight or until the timer expires to give the backpack a full charge.
- 12 When charging is complete, unplug the AC adapter from the Rio's backpack port.


Displaying About information

- 1 Press **Menu**.
- 2 Press the << or >> joypad buttons to navigate to **About**.
- 3 Press **Select**. The following information is displayed:



- Player personalisation message defined through the software or Rio model number.
 - Firmware version the Rio is using.
 - Total internal memory amount installed and a bar graph display of the amount used.
 - Total external memory installed and a bar graph display of the amount used.
- 4 Press the  joypad button to display battery information including:
 - Battery type: Rechargeable or Normal.
 - Battery charge level: The battery's charge state (percentage).
 - Run time estimation: The battery's remaining play time.
 - Battery level graphic: A bar graph inside a battery icon displays the approximate remaining charge.
 - 5 Press the  joypad button to display clock and calendar information.



- 6 Press the  joypad button to display codec information.



- 7 Press **Menu** to return to play mode.

Recording and playing voice

Recording your voice

Note: The recorder automatically turns off the backlight when in use to prevent background noise from the backlight from interfering with your recording.

- 1 To record your voice you can either:
 - Press the **Rec** button on the Rio, or
 - Press **Menu**, press the joypad buttons to navigate to **Record**, then press **Select**.



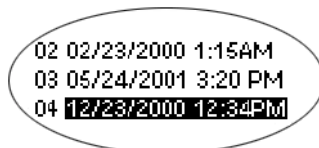
- 2 Highlight **New Recording** and press **Select** to start recording.
- 3 Press **■** to stop recording.

The Recording display includes:

- Status Message: Displays “Preparing to Record”, “Recording...”, “Recording Done”, and so on.
- Recording time elapsed: Displays duration of the present recording in hours:minutes:seconds (hh:mm:ss).
- Memory used graph: Displays how much memory is used and how much is free for recording.
- Percentage of memory remaining: Displays how much free flash memory is left.
- Record level meter: Displays relative volume sensed at the microphone.

Playing a recording

- 1 To play a recording you can either:
 - Press the **Rec** button on the Rio, or
 - Press **Menu**, press the joypad buttons to navigate to **Record**, then press **Select**.
- 2 Highlight **Play Recordings** and press **Select**. A list of recordings on the Rio is displayed:



- 3 Press **>||** or **■** to highlight a recording.
- 4 Press **Select** to play the highlighted recording.
- 5 Press **Menu** to exit to play mode.

Using the Rio software

Rio Audio Manager (PC)

The Rio Audio Manager creates, stores, and organises your digital audio tracks. The software incorporates tools for you to manage digital audio content from your PC. Click on the buttons along the top of the Rio Audio Manager window to use the various digital audio management tools.

Use Rio Audio Manager to:

- Create and organise audio content on your computer.
- Organise audio content on your Rio.
- Create a custom CD-ROM. Rio Audio Manager allows you to write 25 tracks to CD free of charge. **Note:** To unlock unlimited CD writing, you must upgrade the software for a small fee.
- Create compressed digital audio tracks from your music CDs. Use Rio Audio Manager to convert your entire CD collection to compressed digital format. **Note:** The software allows 50 free MP3 encodes prior to a free upgrade that unlocks Rio Audio Manager for unlimited MP3 encoding. However, WMA is the default setting for encoding CDs, and WMA encoding is unlimited and free.
- Search for and download digital audio from the Internet.



Tip: For in-depth instructions on using the Rio Audio Manager software, click on the software Help menu, then click on Help Topics.

Rio Audio Manager buttons

Make a playlist

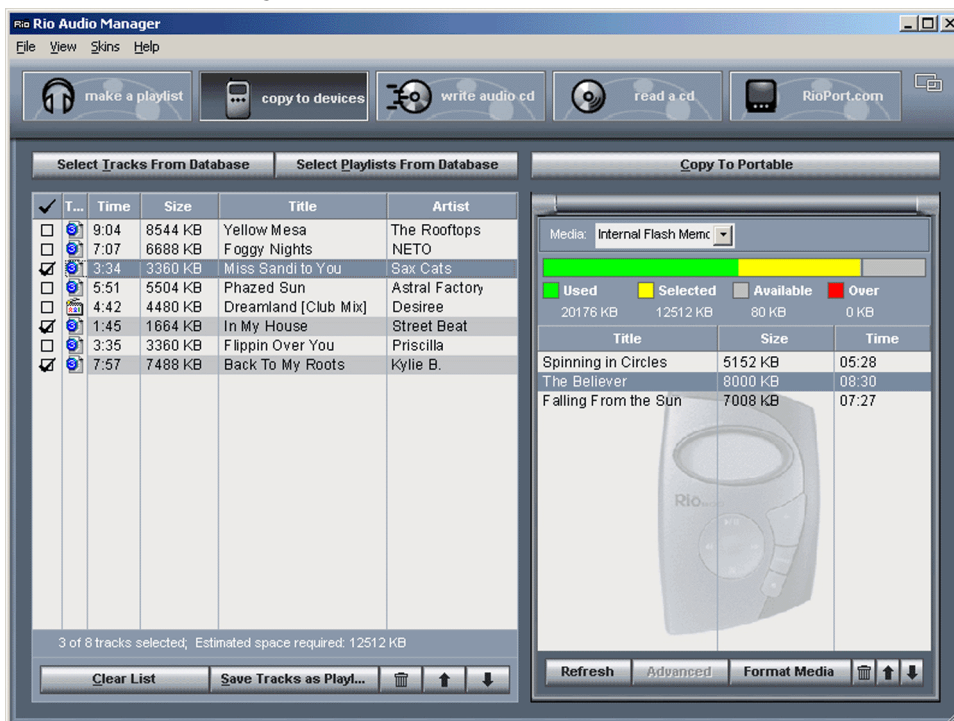
Click on this button to organise audio tracks into playlists on your computer. Listen to playlists directly from your PC.

- 1 Click on the **make a playlist** button.
- 2 Click on the **Select Tracks from Database** or **Select Playlists from Database** buttons.
- 3 Select tracks you wish to listen to by clicking on the check box to the left of the song title. Scroll down as necessary to find a track.
- 4 Click on the **OK** button. The main screen displays the selected tracks.

Copy to devices

Click on this button to organise the content on your Rio. Download tracks to your Rio for playback on the move.

- 1 Plug the USB cable into the multifunction port on top of your Rio 800; plug the other end of the cable into the USB port on your PC.
- 2 Slide the power switch on top of your Rio to **On**.
- 3 Click on the **copy to devices** button.
- 4 Click on the **Select Tracks from Database** or **Select Playlists from Database** buttons.
- 5 Select the tracks you want to download from your playlist by clicking on the check box to the left of the song title.
- 6 Click on the **OK** button.
- 7 Click on the **Copy to Portable** button.



Write audio CDs

Create custom CDs from your favourite tracks and playlists stored in the database. See the Rio Audio Manager online help topics, and your computer's software and hardware documentation for detailed instructions on writing audio CDs.

Read a CD

Take your favourite songs from a CD and convert them to compressed digital audio tracks for playback on your Rio or PC. Click on the **Get Track Titles** button to connect to the Gracenote Web site—formerly CD Database (CDDb)—for title, artist and track information.

- 1 Insert an audio CD in your computer's CD-ROM drive.
- 2 The software prompts you to go online to the Gracenote Web site.
 - If you have an Internet connection, click on **Yes** to immediately connect to Gracenote.
 - If you do not have an Internet connection, click on **No**.
- 3 Select the tracks you want to convert by clicking on the check box to the left of the song title.
- 4 Click on the **Start Reading** button.

Rioport.com

The built-in Internet browser connects you to sites like the RioPort Web site at **www.rioport.com**. Search for your favourite audio tracks on the Web and download them directly to your computer.

To download a song from the RioPort Web site:

- 1 Click on the title.
- 2 Click on the **Download** button.

Use the Help system to learn more

The Rio Audio Manager software includes a complete online Help manual. To learn more about using Rio Audio Manager:

- 1 Click on the Help Menu at the top of the Rio Audio Manager screen.
- 2 Click on Help Topics.
- 3 Click on the topic you are interested in for detailed step-by-step instructions on using Rio Audio Manager.

AudibleManager (PC)

The AudibleManager software supports audio books, lectures, public radio programmes, newspapers, and other spoken word audio programmes.

Use AudibleManager to:

- Create an Audible.com account, where you may choose from thousands of spoken word audio programmes.
- Download audio programmes from the Internet to your PC.
- Transfer audio programmes to your Rio.

For more information, visit the [AudibleManager Web site](#).

SoundJam MP (Mac)

SoundJam MP player and encoder converts music to compressed digital quality MP3s from CD, MP2, AIFF, QuickTime™, SMD, Sound Designer, and WAV formats.

Master Playlist

Use the Master Playlist editor to:

- Search the audio collection stored on your Mac.
- Build and manage custom playlists.



Main Window

Use the SoundJam MP Main Window to:

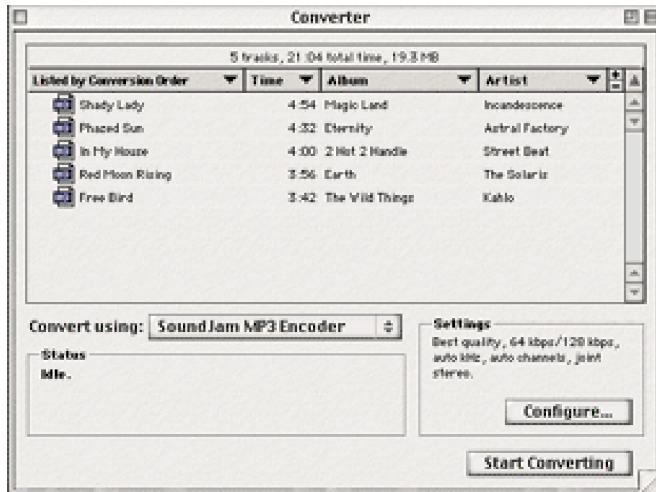
- Listen to audio on your Mac.
- Play music files from your playlist or CD-ROM.



Converter

Use the Converter window to:

- Encode audio CDs.
- Save tracks in MP3 format to be transferred to and played on your Rio.



Connector

The Connector window is displayed when you plug your Rio into your Mac using the USB cable.

Use the Connector window to:

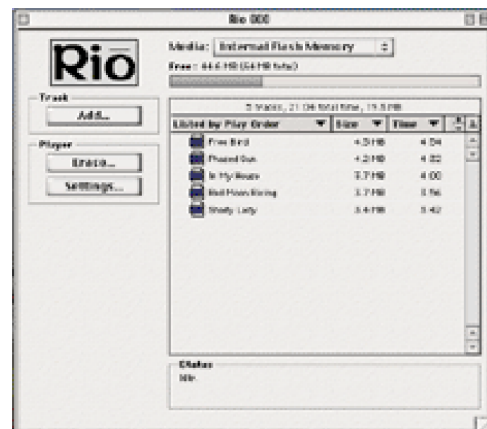
- Manage the content on your Rio.
- Export audio to your Rio. Choose the track by selecting “Add...” or drag the desired track to the view window.

Use the Help system to learn more

The SoundJam software includes online Help. To learn more about using the SoundJam MP software:

- 1 Click on the Help Menu.
- 2 Select SoundJam MP Help.
 - Click on the topic you are interested in for detailed step-by-step instructions.
 - Click on How To Use This Help System to understand the basics of using SoundJam Help.

For more information about SoundJam, visit the [SoundJam Web site](http://www.soundjam.com).



Digital audio terms

AAC

Advanced Audio Coding (AAC) is one of the audio compression formats defined by the MPEG-2 specification. AAC used to be called NBC (Non-Backward-Compatible), because it is not compatible with the MPEG-1 audio formats. AAC may eventually replace MP3 since it offers better sound quality and greater file compression.

ADPCM

Adaptive Differential Pulse Code Modulation (ADPCM) is a form of pulse code modulation (PCM) that produces a digital signal with a lower bit rate than standard PCM. The Rio 800 uses ADPCM for voice recording. ADPCM produces a lower bit rate by recording only the difference between samples and adjusting the coding scale dynamically to accommodate large and small differences.

Bit Rate

Bit rate denotes the number of bits per second used to represent an audio signal. The size and quality of a digital audio file is determined by the bit rate used when encoding the file. The higher the bit rate used, the higher the sound quality and the larger the file size. For example, with MP3, a bit rate of 128 k is usually very close to CD quality, and takes up about 1 MB per minute of music. At a 64 k bit rate, the sound quality is similar to that of an FM radio signal, but you may get around two minutes of music in that same 1 MB of storage space.

CDDB

See [Gracernote](#).

Codec

Depending on the context and the kind of technology involved, codec may be defined in two ways. In telecommunications, a codec is usually a “coding/decoding” chip used to translate between digital and analogue transmissions. A modem uses one to interpret incoming analogue signals and converts the digital data stream coming from the computer into analogue. A codec is also defined as a compression/decompression algorithm. Codecs are used to compress audio data into a file, often for efficient transmission over a network, and then decode it for playback.

The Rio 800 supports the following digital audio file codecs:

- MP3
- WMA
- ADPCM—for voice recording
- ACELP.net (Audible)

DRM, security

Digital Rights Management (DRM) technologies protect copyright ownership of digital information. DRM became an issue with the rise of MP3 technology and Internet distribution of music. DRM platforms serve as a security “wrapper” around digital audio supporting Internet distribution while at the same time protecting and managing rights related to that digital information.

The security mechanism in the Rio supports several secure file formats. When you download a secure track from a CD or the Web to the Rio, you must have the licence associated with the track. If the Rio does not read a corresponding licence for a track, the tracks themselves contain information on where you can purchase them. Publishers can program restrictions on how many times you can play, copy, or distribute a song directly into the music files. Although the Rio includes security, it is still able to accept and play standard MP3 files.

Encoding, or Ripping (a CD)

Encoding, or “ripping”, refers to converting an audio file from an audio CD into a compressed digital audio format, such as MP3 or WMA, that may be played on the Rio or a computer.

Firmware

Firmware is software—programmes or data—that has been written to read-only memory (ROM). Firmware is a combination of software and hardware that is comparable to an operating system on a computer. The Rio firmware controls everything from the liquid crystal display and codec support to the Rio’s many other functions.

To view your Rio’s firmware version:

- 1 Press the **Menu** button.
- 2 Press the **<<** or **>>** (Forward or Reverse) joypad buttons to navigate to **About**.
- 3 Press **Select** (Centre joypad button). The firmware version the Rio is using is displayed.

[How to upgrade the Rio firmware](#)

Gracenote

Gracenote, formerly known as the CD Database (CDDB), is a vast database of CD information that includes artist, disc name, song title, and other information. Gracenote supports hundreds of third-party software CD players. Software programmes use CD serial numbers to search the Gracenote Web site for CD information. Access to the Gracenote service is offered free of charge to end-users. Visit the [Gracenote Web site](#) for more information.

MP3

MPEG-1, Layer 3 Audio (MP3) is a compressed digital audio file format. This format allows for near CD-quality sound, but at a fraction of the size of normal audio files. MP3 conversion of an audio track from CD-ROM reduces the file size by approximately a 12:1 ratio with virtually no loss in quality. This digital sound encoding and compression process was developed by the Fraunhofer Institut für Integrierte Schaltungen and Thomson Multimedia. MP3 uses perceptual audio coding and psychoacoustic compression to remove the redundant and irrelevant parts of a sound signal that the human ear does not hear. It also adds a Modified Discrete Cosine Transform (MDCT) that implements a filter bank, increasing the frequency resolution to 18 times higher than that of layer 2. The MP3 encoding process is well suited for the transfer of high quality audio files with small file size over the Internet.

Playlist

Playlists let you organise lists of tracks to play in the order you choose. Playlists make it easier to manage large collections of music.

Ripping

See [Encoding](#).

SDMI

The Secure Digital Music Initiative (SDMI) is a forum of over 130 companies in the fields of recorded audio content, computers, and consumer electronics, for the purpose of developing an integrated method of copyright protection technology that can be used worldwide. SDMI is working to create a framework for preventing improper usage of audio files and to promote legal music distribution services.

Skin

The skin is the software option that determines how digital audio player software applications appear on your computer screen. Some applications allow you to customise the colour and window design of your software by changing the skin. Some skins omit certain playback controls for simplicity.

USB

Universal Serial Bus (USB) is the external bus standard that supports data transfer rates of 12 Mbps (12 million bits per second). The Rio uses USB to communicate with the computer. A single USB port may be used to connect up to 127 peripheral devices, such as mice, modems, and keyboards. USB also supports Plug-and-Play installation and hot plugging. It is expected to completely replace serial and parallel ports.

WMA

Windows Media Audio (WMA) is the compressed audio format created by Microsoft as a alternative to MP3. WMA may replace MP3 since it offers greater file compression—twice that of MP3—at the same or better sound quality.

Common questions about the Rio 800

How do I put music on the Rio?

The Rio interfaces with your computer through the USB port. Use the software included to download digital audio tracks from your computer to the Rio. You can get digital audio from numerous Internet sites or encode your own digital audio tracks from your audio CDs using the CD-ROM drive on your computer.

Can I use the Rio with Windows 95? I have the USB supplement pack.

No. The Rio USB devices can only be used with Windows 98, Windows ME or Windows 2000 operating systems, or Mac OS 8.6 or later. The Rio requires a newer standard of USB that is not available in Windows 95, even with the USB supplement pack.

Where is the serial number located on the Rio?

The serial number is on the back of the Rio under the backpack. Remove the backpack from the Rio to see the serial number (S/N).

How do I upgrade the Rio firmware?

Checking your Rio's firmware version

Important: First determine the version of the firmware installed on your Rio. Do not "downgrade" your Rio firmware by installing an older version.

- 1 Press the **Menu** button.
- 2 Press the << or >> (Forward or Reverse) joypad buttons to navigate to **About**.
- 3 Press **Select** (Centre joypad button). The firmware version the Rio is using is displayed.

Downloading the firmware upgrade from the Rio Web site

- 1 Go to the [Rio Web site](#)
- 2 Click on **Support**, then click on **Firmware upgrades**.
- 3 Select and download the latest **Rio 800 xxxx.exe (PC)** or **Rio 800 Update xxxx (Mac)** firmware upgrade file to your computer.

Upgrading the Rio firmware (PC)

Important: Do not close the program, turn off the Rio or unplug the USB cable during the upgrade.

- 1 Connect the Rio to the computer using the USB cable.
- 2 Slide the Rio power switch to **On**.
- 3 Double-click on the **Rio 800 xxxx.exe** firmware upgrade file. The RioFlasher window is displayed.
- 4 Click on the **Upgrade Now** button on the RioFlasher window.
- 5 Click on **Yes**.
- 6 When the upgrade is complete, a check of the firmware version displays the new version number.

Upgrading the Rio firmware (Mac)

Important: Do not close the programme, turn off the Rio or unplug the USB cable during the upgrade.

- 1 Connect the Rio to the computer using the USB cable.
- 2 Slide the Rio power switch to **On**.
- 3 Double-click on the SoundJam icon. The Rio Connector window is displayed.
- 4 Click on the **Settings...** button on the Rio Connector window. The Rio Settings window is displayed.
- 5 Click on the **Upgrade Firmware** button on the Rio Settings window.
- 6 Choose the **Rio 800 Update xxxx** firmware upgrade file.
- 7 Click on the **Open** button.
- 8 When the upgrade is complete, a check of the firmware version displays the new version number.

The Rio is connected to the USB, why doesn't the computer recognise it?

First, make sure the Rio software is running and check to make sure the USB cable is fully connected to both the Rio and the computer. Then turn the Rio off and back on.

If this does not fix the problem, from within the Rio Audio Manager software click on the **View** menu, click on **Options**, then click on the **Portable** tab. In the drop-down list, change **Autodetect device** to **Rio800**.

Is the Random menu function truly random?

No. The Random function uses an algorithm called pseudo-random which is common to all computers. The Rio selects a seed number and then enters a list of predetermined random numbers to play music in a seemingly random order. If the same seed is picked, the Rio may play songs in the same order.

Can I play animated graphics on my Rio at startup?

Startup animated graphics may be available at www.rioport.com or other Web sites in the future. Instructions for their use and how to load them on the Rio will be available on the Web site.

I registered the Rio Audio Manager software on my first computer, but when I install it on another computer, it tells me that the code is not valid.

The licence is system specific. If you plan to use the software on multiple computers, you must register the software on each computer.

How do I unlock Rio Audio Manager so I can encode more CDs?

Rio Audio Manager allows 50 free MP3 encodes prior to a free upgrade that unlocks Rio Audio Manager for unlimited MP3 encoding. WMA is the default setting for encoding CDs and there is no limit to how many WMA encodes you can make.

Note: The Rio must be connected to the computer and turned on to complete the online upgrade.

- 1 Double-click on the Rio Audio Manager Icon to run the program.
- 2 Click on the Help menu at the top of the screen.
- 3 Click on **Upgrade Online**.
- 4 Follow the instructions on the screen.
- 5 You will receive your unlock code/certificate number by e-mail.

How do I register my SoundJam software online?

SoundJam allows 50 encodes prior to registration.

- 1 Double-click on the hard drive icon.
- 2 Double-click on the SoundJam folder.
- 3 Double-click on the SoundJam MP icon to open the program. You will immediately be prompted to register online.
- 4 Click on the **Register Now** button.
- 5 Follow the instructions on the screen.
- 6 You will receive your unlock code by e-mail.

Why do I get an error when I click on Read a CD to start encoding?

The following factors may interfere with the CD encoding process:

- 1 Over-utilisation of the CPU during the encoding process. Close all other software before encoding.
- 2 Insufficient RAM to cache the track properly. Generally, 64 MB is fine if no other memory-intensive application is running. Close all other software before encoding. Win 98 uses about 15-20 MB of RAM at startup depending on what applications you have running.
- 3 CD-ROM firmware. Even if a CD-ROM drive is new, it may require a firmware update from the manufacturer to correct audio extraction errors.
- 4 Overclocking. Overclocking the system—running it faster than it is rated to run—can have adverse effects on the peripheral components. If your system is overclocked, bring it back to its normal operating speed.
- 5 Try manually changing the settings that Rio Audio Manager assigns to your CD drive. To do this, go to **View>Options>Read CD**. If it is set to Digital (WinAspi), try changing it to Digital or vice-versa. If you have a sound card, change it to Analogue. Analogue may be slow.

How can I get the best sound quality when encoding from a CD?

If you use a significant amount of your computer system's resources with other applications, encoding songs from a CD may result in poor quality recordings. If the song(s) you encode contain abnormalities such as pops or skips, close down other applications which are running and encode those songs again. The condition of the audio CD—scratches and so on—may affect the quality of the recording as well.

One Year Limited Warranty

Our warranty to you

SONICblue, Incorporated warrants that your product will be free from defects in materials and workmanship for a period of one year from the date of original retail purchase. If you discover a defect covered by this warranty, we will repair or replace the product at our option using new or remanufactured components. SONICblue, Incorporated's liability is limited solely to the repair or replacement of the defective product. This warranty is extended to the original end-user purchaser only and is not assignable or transferable to any other party. Any parts or boards removed in the replacement or remanufacture process shall become the property of SONICblue, Incorporated. Out of warranty service may also be available for a fee.

How to obtain service under this warranty

To obtain service under this warranty, please contact the dealer from whom you purchased this product or call the SONICblue, Incorporated Customer Care Centre on +44-(0)870-870-5727 for return instructions.

[Customer Care](#) hours of operation are:

- Monday to Friday 8.00 until 19.00 GMT
- Saturday 8.00 until 15.00 GMT

You must deliver the product and the original sales receipt to either the dealer from whom you purchased this product or to SONICblue, Incorporated in order to obtain service under this warranty. If you return the product to us, you must pay for postage to SONICblue, Incorporated.

Product failures not covered by this warranty

This warranty covers defects in manufacture that arise from correct use of the device. It does not cover damage caused by abuse, misuse, improper modification or repair, moisture, extreme heat or cold, corrosive environments, transportation, or high voltage surges from external sources such as power lines, telephone lines, or connected equipment. This warranty does not cover wear and tear on covers, housing or wiring. This warranty likewise does not apply to any product with an altered or defaced serial number.

How to obtain out of warranty service

To obtain out of warranty service, please contact the SONICblue, Incorporated [Customer Care](#) Centre on +44-(0)870-870-5727 (see above for hours of operation).

Out of warranty service is provided for owners of Rio 800 Personal Digital Music Players who:

- Are unable to provide valid proof of purchase for their Rio Personal Digital Music Player.
- Require repair service after the expiry of the original warranty.
- Require service for product failures not covered under the SONICblue, Incorporated warranty on this product.

Out of warranty service is limited to the Personal Digital Music Player only and is not available for headphones, memory cards or other accessories.

The fee for out of warranty repairs is payable by credit card at the time the service agreement is created and Return Authorisation is provided. This fee includes all labour, parts needing replacement, and return postage.

You must deliver the product to SONICblue, Incorporated in order to obtain out of warranty service. You must pay for postage to SONICblue, Incorporated. It is recommended that you use a postal service providing you with tracking capability, because we will not be responsible for items lost in the post. A Return Authorisation number is required for all products sent to SONICblue, Incorporated. Please contact our Customer Care Centre for more information or to arrange for out of warranty service.

Limits of liability

We are responsible only for the repair of this product. We will not be liable to you or anyone else for any damages that result from the failure of this product or from the breach of any express or implied warranties. These include damage to other equipment, lost data, lost profits, or any consequential, incidental, or punitive damages. IN NO EVENT WILL SONICblue, Incorporated BE LIABLE FOR ANY AMOUNT GREATER THAN THE CURRENTLY SUGGESTED RETAIL PRICE OF THIS PRODUCT.

THIS WRITTEN WARRANTY REPRESENTS THE ENTIRE WARRANTY AGREEMENT BETWEEN SONICblue, Incorporated AND YOU. THIS WARRANTY IS GIVEN IN LIEU OF ALL OTHER WARRANTIES, EXPRESS OR IMPLIED, INCLUDING WITHOUT LIMITATION IMPLIED WARRANTIES OF MERCHANTABILITY AND FITNESS FOR A PARTICULAR PURPOSE. THIS WARRANTY IS LIMITED TO THE TERM SPECIFIED ABOVE. NO WARRANTIES, EITHER EXPRESS OR IMPLIED, WILL APPLY AFTER THIS PERIOD. THIS WARRANTY MAY NOT BE ALTERED IN ANY WAY OTHER THAN IN WRITING BY AN OFFICER OF SONICblue, Incorporated. This warranty gives you specific legal rights and you may also have other rights, which vary.

Regulatory Information

EU Declaration of Conformity

We;

DIAMOND Multimedia Systems Vertriebs GmbH

Moosstrasse 18b

D-82319 Starnberg

GERMANY

On behalf of;

SONICblue, Incorporated

2841 Mission College Blvd.

Santa Clara, CA 95054 USA

Hereby declare under our sole responsibility that the following product(s) conform to the requirements of the European Parliament Council Directive 1999/5/EC dated 9th March 1999. And to which this declaration is related the product(s) listed are in conformity with the following relevant harmonised European Standards or other normative documents, the references of which have been published in the Official Journal of the European Communities / European Union.

Product(s): **RIO 800**

Harmonised Standards:

EN 55022: 1994, A1 '95, A2 '97 Specification for limits and methods of measurement of radio interference characteristics of Information Technology (ITE) Equipment.

EN 50082-1: 1998 Electromagnetic Compatibility, Generic Immunity Standard, Part 1. Residential, Commercial and Light Industry.

EN 50332-1: 2000 Maximum sound pressure level measurement methodology and limit considerations. Part 1 General method for "one package equipment".

CEI/IEC 60065: 1998 Audio, Video, and Similar Electronic Apparatus Safety Requirements.

In accordance with the terms of Directives 1999/5/EC, 89/336/EEC, 73/23/EEC and Council Decision 98/482/EC, the original signed Declaration is retained by us in the product compliance folder. Upon request photocopies may be provided.

Date: 07 February 2001

Place: St. Ingbert, Germany

Name of Authorising Person

Scott Naccarato

Regulatory Compliance Manager



Customer Care

Hours of Operation

Monday to Friday 8.00 until 19.00 GMT

Saturday 8.00 until 15.00 GMT

Telephone Support - all Products

+44-(0)870-870-5727

Fax Support- all Products

+31-53-484-9536

Web site

<http://www.diamondmm.co.uk>

Postal Address

SONICblue/Diamond

European Customer Care Center

P.O. Box 52

7500 AB Enschede

The Netherlands

Index

A

- AAC 23
- ADPCM 23
- Audible Manager software 20
- audio file size 23
- audio functions 7

B

- backlight 13
- backpack 6
- battery calibration 15
- battery power level 15
- bit rate 23

C

- calibrate 15
- CDDB 24
- charge backpack 6
- clock
 - display 16
 - set 14
- codec (defined) 23
- codecs
 - AAC 23
 - ADPCM 23
 - MP3 25
 - WMA 25

- common questions 26
- contrast 13

D

- delete
 - playlist 12
 - track 10
- display
 - backlight 13
 - battery information 15
 - contrast 13
 - firmware version 16
 - memory information 16

- DRM 24

E

- encode (defined) 24
- equalizer
 - built-in 7
 - custom 8
- EU declaration of conformity 31

F

- file compression 23
- firmware
 - checking 26
 - defined 24
 - downloading from Web site 26
 - upgrading 26
- forward button 4
- frequently asked questions 26

G

- Gracenote 24

L

- LCD backlight 13
- LCD contrast 13
- legal notices 2
- liquid crystal display (LCD) 5

M

- menu button 5
- MP3 25

N

- new battery installation 6

O

- one year limited warranty 29

P

- play options
 - random 9
 - repeat 9
- play/pause button 4
- playlist
 - build 11
 - choose 11
 - defined 25
 - modify 12
 - remove 12

- power saving 13

R

- RAM 18
- randomise tracks 9
- rechargeable battery 6
- record button 5
- recording voice 17
- repeat tracks 9
- reverse button 4
- Rio Audio Manager 18
- Rio software 18, 21

S

SDMI 25

select button 4

skins 25

SoundJam MP 21

stop button 4

T

time and date

display 16

set 14

time to sleep setting 13

troubleshooting 26

U

USB 25

V

voice recording 17

W

warranty 29

WMA 25